



**SOUTH DERBYSHIRE
PARTNERSHIP**

**Mike Roylance
Head of Economic Development
and Growth**

South Derbyshire District Council
Civic Offices, Civic Way,
Swadlincote, Derbyshire, DE11 0AH.

Please ask for Sally Cope
Tel: (01283) 221000 Ext. 5791
DDI: (01283) 595791
Email: sally.cope@southderbyshire.gov.uk
www.southderbyshire.gov.uk

13 October 2021

Dear Sir/Madam

BOARD MEETING

A Board Meeting of the South Derbyshire Partnership will be held virtually via Microsoft Teams on **Wednesday 20th October 2021 at 10:00 am.**

You are requested to attend.

Yours faithfully

Allison Thomas
Strategic Director – Service Delivery

Enc



Voting Members of the Board:

Local Authority Sector

District Councillor Kevin Richards (South Derbyshire District Council) (Chairman)
Cllr Stephanie Marbrow (Derbyshire Association of Local Councils)
Councillor David Muller (Derbyshire County Council)
Allison Thomas (South Derbyshire District Council)
District Councillor Trevor Southerd (South Derbyshire District Council)
District Councillor Lisa Brown (South Derbyshire District Council)

Other Public Sector

Lena Ratcliffe (Derbyshire County Council – Children’s Services)
Steve Hall (The Pingle Academy)
Chief Inspector Fiona Kilgour (Derbyshire Constabulary)
Vicky Smyth (Derbyshire County Council – Public Health)
John Beaty (Burton & South Derbyshire College)
Tina Brown (NHS Derby and Derbyshire Clinical Commissioning Group)

Private Sector

Julie Langley (Toyota UK Ltd)
Colleen Hempson (East Midlands Airport)
Louise Driver | John Everitt (The National Forest Company)
Kim Coe | Rob Coe (Swadlincote & District Chamber of Trade)
Julie Batten (Sharpe’s Pottery Heritage and Arts Trust)
VACANT

Voluntary/Community Sector

Sally Eccles (Home Start Derby & South Derbyshire)
Brian Martin (Interim CEO South Derbyshire CVS)
Dr Claire Teeling (Grow Outside C.I.C.)
Matt Buckler (Derbyshire Wildlife Trust)
Revd Dr Mike Firbank (Churches Together in Swadlincote)
VACANT





Agenda

Time and Date 10am, Wednesday 20 October 2021

Venue Virtual

Item	Description	
1	Introductions, apologies and to note any substitutes appointed for the Meeting.	10:00am
2	Declarations of Interest.	
3	To receive the Minutes of the Meeting held on 20 April 2021 (Attached).	
4	Matters Arising.	
5	East Midlands Airport (Joe Chapman)	10.15am
6	Theme Updates: <ul style="list-style-type: none"> • Healthier Communities (Vicky Smyth). • Children and Young People (Dave Beris). (verbal) • Safer Communities (Chris Smith). (verbal) • Stronger Communities (Brian Martin). (verbal) • Sustainable Development (Mike Roylance). (verbal) Incorporating Sustainable Community Strategy Action Plan updates - Appendix 1 (Report attached).	10:35am
7	Budget Update, including 50+ Survey Project Proposal	11:25am
8	Feedback and Future Agenda Items.	11:30am
	Date of Next Meeting: 9 February 2022 – 10:00am	Finish





**Agenda MINUTES OF THE BOARD MEETING HELD ON TUESDAY 20 APRIL 2021
DRAFT**

SDP/28. PRESENT

Local Authority Sector

District Councillor Kevin Richards (Chairman), District Councillor Trevor Southerd, Allison Thomas (South Derbyshire District Council), County Councillor Mrs Linda Chilton (Derbyshire County Council), District Councillor Lisa Brown (South Derbyshire District Council).

Other Public Sector

Dave Beris (Derbyshire County Council – Children’s Services), Vicky Smyth (Derbyshire County Council – Public Health), John Beaty (Burton and South Derbyshire College), Brenda Nolan O’Shea (NHS Derby and Derbyshire Clinical Commissioning Group), Inspector Richard Keene (Derbyshire Constabulary).

Private Sector

Colleen Hempson (East Midlands Airport), Julie Langley (Toyota Motor Manufacturing UK Ltd), John Everitt (National Forest Company).

Voluntary/Community Sector

Roger Moors (South Derbyshire CVS).

Also in Attendance

Mike Roylance, Chris Smith, Donna Foster, Sally Cope (South Derbyshire District Council), Kay Simcox (Derbyshire Fire & Rescue Service).

SDP/29. APOLOGIES

Apologies for absence from the Meeting were received from:

- Stephanie Marbrow (DALC Representative).
- Rev Mike Firbank (Churches Together in Swadlincote).
- Vivien Sharples (The Pingle Academy).
- Matt Butler (Derbyshire Wildlife Trust).
- Justin Holford (Derbyshire County Council).
- Kim Coe (Swadlincote & District Chamber of Trade).
- Lena Ratcliffe (Derbyshire County Council).
- Claire Teeling (Grow Outside CIC).
- Maria Picken (Sharpe’s Pottery Heritage and Arts Trust).

SDP/30. INTRODUCTIONS, APOLOGIES, SUBSTITUTES

The Chair of the SDP, Councillor Kevin Richards thanked everyone for their attendance and welcomed the partners to a different virtual format of the Partnership Board meeting.

County Councillor Linda Chilton informed the group that this would be her last meeting, due to not standing in the May elections. Sincere thanks were expressed by the Chair and by Councillor Lisa Brown.





SDP/30. Continued/...

Introductions took place.

Apologies noted.

Substitutes noted.

SDP/31. DECLARATION OF INTEREST

No declarations of interest were noted.

SDP/32. MINUTES OF MEETING

The Minutes of the Meeting held on 20 October 2020 were taken as read and approved as a true record.

SDP/33. MATTERS ARISING

No matters arising.

SDP/34. APPOINTMENT OF VICE CHAIR

Roger Moors (South Derbyshire CVS) was appointed to the role of Vice Chair, to deputise for the Chairman of the Partnership.

SDP/35. OVERVIEW OF COVID-19 RESPONSE AND RECOVERY

Allison Thomas provided the Partnership with a brief overview of the Covid-19 response and recovery. Following the latest update (19.4.2021), South Derbyshire is turning a corner - current statistics shows 20 cases per 100,000 population, which is a significant 40% improvement from where it was some months ago.

Excellent progress has been made on the vaccination programme since the last Board meeting. Although many of the impacts of Covid have been dreadful, some were noted as positive, such as the environmental benefits of cleaner air quality, a reduction in energy use, the appreciation of the natural and physical environment and open spaces, less need to travel and shorter commuter journeys, with the opportunity to work smarter. Services that have been successfully adapted in the light of the pandemic may well stay as partners plan for the future.



Allison felt that the last six months had enhanced our positive partnership working across the District. Theme group representatives have met every fortnight to discuss areas of collaboration, which has worked well, enabling the partners to respond positively to the local intelligence and build on an already strong partnership working in the District. Partners will also continue to meet regularly at a County level where needed and engage on arrangements being put in place to aid recovery.

Allison handed over to the Theme Group leads to elaborate on their respective areas:

SDP/36. THEME UPDATES

Healthier Communities

Vicky Smyth gave an overview of the work of Healthier Communities during the pandemic. The latest data can be viewed in more detail in the surveillance reports which can be found on Derbyshire County Council's website. The statistics put South Derbyshire below the Derbyshire average, which is positive news, with low case numbers in hospital, allowing some resumption of other services. Intensive surveillance continues to identify issues and specialist support is available for workplaces.

An overview of ongoing community response and recovery work was provided to the Board.

The Community Testing Centre at Midway remains open until at least June, after which its continued operation will be reviewed. Partners were asked to spread the word and encourage local residents to get tested on a weekly basis.

There is currently a focus on vaccination inequality work to identify which communities in the District have a lower uptake of vaccinations. The Community Response Unit can support booking appointments for those that have no access to digital means or can provide help with transport (financial provision is in place to help with transport). Those struggling to get to a vaccination centre are encouraged to contact the Unit and access the support available.

Some highlights of joint working undertaken this year were provided. This included a leaflet enclosed with Council Tax bills providing details of key information/support services. This has now been distributed to every household throughout the District.

Vicky identified some of the key issues that might impact on health and wellbeing in the coming year. These will be some of the priorities for Health and Wellbeing, working alongside the Place Alliance partners moving forward.

An overview of the Group's budget was provided along with details of the approved projects: Digital learning project outputs were provided following the pilot project; Details were shared of the support for emotional health amongst children and young people - a community-based approach focusing on early intervention - and the three priority areas for the South Derbyshire Mental Health Partnership; Details were provided of the proposed 'Beat the Street' project which creates opportunities for active community participation in an area; Together with an overview of Green Social Prescribing, a collaborative approach to joining up the health system with 'green' providers, such as Derbyshire Wildlife Trust.



A question was raised regarding the Covid contact and trace service: Who takes responsibility and what is the response when initiated from the public? Response from Vicky - her understanding is that this operates on a national basis, with Derbyshire having employed an enhanced system of contact tracing locally, so that when there is an area of concern, they can request enhanced coverage. The last incident in South Derbyshire had a good response with 80% being picked up – Vicky to check this figure and report back. **ACTION: VS**

A question was raised regarding how public health promotes the Testing Centre facilities? Vicky will feedback comments from Julie Langley to DCC's communications team. There is regular promotion on social media by the comms team along with lamp post flags around South Derbyshire which are a reminder to go for tests, plus electronic signage messages. DCC's Communications Team also looks at where there are peaks in cases and will target the communications on those areas.

Safer Communities

Chris Smith gave an overview of the impact that Covid-19 has had on crime and disorder in South Derbyshire. Details of the increases and decreases in measures were provided.

There has been an increase in domestic-related incidents of 8% (figures to end of March 2021) which equates to 100 incidents. Anti-Social Behaviour has seen the biggest increase at 121% - the Police having an additional 2,000+ calls. The reasons for this are mainly due to breaches of Covid rules, groups meeting in parks, etc, which have been recorded as incidents of ASB. Hate crime incidents increased by 81%. Conversely, there has also been a reduction in burglary and vehicle crime and town centre ASB. Total crime in South Derbyshire has seen a small decrease of 0.5%.

Weekly meetings are being held involving the Police, District Council and Covid Wardens to ensure parks are regularly patrolled. The Safer Homes scheme is back up and running. No issues of cuckooing have been discovered over the last 12 months, with police tasking meetings continuing to check this on a monthly basis, and action plans in place.

Crime and ASB figures for South Derbyshire were provided.

The Safer Communities Partnership Plan priorities remain the same: (1) Organised Crime (2) Anti-Social Behaviour and (3) Supporting Vulnerable People, with the addition of hate crime as a specific focus under supporting vulnerable people.

A question was asked about pet thefts? The response was that two incidents had been reported in South Derbyshire, though it is believed to be a bigger issue outside of the District. Chris to go back to the Police Inspector to see whether there is any further communication that can be employed to ease people's fear of this crime. Inspector Richard Keene representing Derbyshire Police reiterated that the theft of dogs issue had been overblown by social media recently and that the public should not be terrified about walking their dog. **ACTION: CS**



Stronger Communities

Roger Moors updated on the Stronger Communities position at the current time. In April 2021 Rev. Mike Firbank stood down and Roger Moors took over the role of Chair. Following the change, a review of the Group's objectives was undertaken to reflect the move from Covid response to recovery.

Going forward, the Group will be reviewing how it engages with local organisations, aiming to broaden representation, ensure representation of all communities of interest and expand the scope of the Group. This will focus on the value of representation in informing and influencing decision making by partner organisations.

The Food Hub has relocated to Hill Street Baptist Church, principally due to the amount of space available and facilities. A grant has been secured of £20,000 to support the infrastructure and to aid other activities going forward. Data for April – December 2021 revealed that the Food Hub had supported 1,063 adults and 773 children with 16,524 meals provided.

A Social Mobility 'Action Group' has been set up to support the work currently being undertaken in and around Newhall.

The South Derbyshire Volunteer Force, which has been newly rebranded, recruited 300 volunteers to support the roll-out of the vaccination programme, many of whom have continued volunteering.

The Covid Information Connectors are a system-wide approach across Derbyshire aiming to enhance residents' awareness of restrictions and wellbeing guidance. A network of 21 Connectors has been created across South Derbyshire. Information is provided to the Connectors on a fortnightly basis, those connectors then send this out through their own networks - currently the network reaches some 50,000 people. A variety of sources have been built up to ensure people are aware of all the advice and guidance available. The aspiration is to enlarge the network from 21 to 30 or more.

A substantial amount of funding is available to local communities, clubs and groups. This is currently being promoted to local groups, to encourage uptake, to help them re-engage and get up and running and ready to open. Partners were asked to promote the funding opportunities to their local communities. **ACTION: ALL**

In order to recognise volunteering communities, this year's community awards will be in a virtual format - the South Derbyshire Community Heroes Roll of Honour. This is a chance to thank those volunteers who have contributed during this challenging time. The roll of honour will be announced in June during Volunteers Week and heroes will receive a certificate, celebration badge and be credited. Three films will be produced to highlight how South Derbyshire communities have responded.



Sustainable Development

Mike Roylance provided an overview of the recent developments in Sustainable Development.

The most high-profile is the East Midlands Freeport bid - the Chancellor announced eight locations around the country, with the East Midlands the only inland location and only one based around an airport. The bid encompasses a number of sites in close proximity - East Midlands Airport/Gateway in Leicestershire, Ratcliffe on Soar power station in Nottinghamshire, and land to the south of the Toyota Plant at Burnaston in South Derbyshire, alongside the existing railway line. The East Midland Freeport proposal is based on logistics and advanced manufacturing, with a strong environmental theme, and aims to contribute to job creation, private sector investment and climate change measures, moving road freight onto rail. The Freeport will be a designated area within which companies can operate using simplified customs procedures and suspensions on duties relating to goods. Further guidance on the incentives to be offered will be released in the coming months.

There was a landmark celebration for the National Forest Company which has now reached nine million trees planted across the Forest area. This was accompanied by a Government announcement of an extra £2.26 million pounds from the Nature to Climate Fund which will allow the National Forest to double its tree planting aspirations for the current year. The Company will also be supporting the woodland economy, arts and culture, outdoor learning, tourism and visitor accommodation, in order to assist the green recovery.

The District Council has been distributing Covid-19 business support grants for almost 12-months and has now provided in excess of £10 million pounds to local businesses in South Derbyshire.

ShopAppy is a joint project with Derbyshire County Council focusing on supporting town centre businesses. It provides an online retail platform which allows small independent business to promote and sell their products online, to offer click and collect, and to arrange home deliveries in towns across Derbyshire. About 40 retailers have signed up in Swadlincote and some 300 across the County.

Woodville Regeneration Route has been on site for 5-6 months and construction progress has been very rapid. The Route links Woodville to Swadlincote and opens up an extensive area of former industrial land for new development. Earthworks have been completed on the former Dyson site, which will then join an upgraded Kiln Way through to Derby Road. Three new roundabouts along the route are currently under construction.

Amongst a number of positive developments are Mercia Park at Appleby which is under construction and will become Jaguar Land Rover's global distribution centre and the announcement by the MEG Group of an investment at Dove Valley Park, Foston. The Company have committed to build a new bottling plant on the site, which will supply soft drinks and mineral water to Lidl supermarkets, across the UK and Ireland, creating around 150 new jobs.

The South Derbyshire Business Advice Service, which is funded by the District Council, has delivered some 340 advice session to businesses, benefiting around 190 individual businesses.



A Green Entrepreneur Programme has been launched by Derbyshire County Council, assisting businesses and employees to enter new areas of work linked to carbon reduction.

A discussion took place on the potential impact on local residents if the East Midlands Freeport bid were to lead to an increase in flights, or night flights. Colleen Hempson briefly outlined the Airport's Noise Action Plan and highlighted that, nationally, the Department for Transport was undertaking a night flight restrictions consultation and that the Government was remobilising the Airspace Change Programme (enabling Airports to take advantage of new technology and make changes to the flightpaths).

A question was asked about how 'in control' we are going to be locally of the planning process and the business planning for the Freeport. With regards to the Business Plan guidance from Government is currently awaited. In terms of planning, public consultation and timing, Mike undertook to pass on Cllr Brown's comments to Steffan Saunders (Head of Planning and Strategic Housing). **ACTION: MR**

The importance of securing infrastructure investment in advance of developments was highlighted.

Children and Young People

Dave Beris gave an overview on behalf of Children and Young People. The Locality Children's Partnership has been very active, meeting every two-months, with good representation from agencies, schools and other partners. All agencies have contributed to a new plan that links with public health to ensure no duplication of projects.

The partnership has identified a need to support the emotional wellbeing of young people and their families within the area. Another priority is school readiness, targeting family support on socially isolated parents who have young children to help them prepare their children for school.

Activity in terms of operational duties has continued, providing support to the most vulnerable families. Plans are underway to enable staff to move back into their offices. Virtual groups have provided a range of support along with parenting and online exploitation courses, little learners and youth preventative services. A youth programme is currently being devised involving two schools in Swadlincote.

Issues affecting young people are expected to increase over the next year as the effects of the pandemic unravel.

SDP/37. BUDGET UPDATE

The Board agreed the end of year (2020/21) financial position of the Partnership.



The Board:

- (a) ratified match funding for the ALICE Project (£1,500).
- (b) supported funding for the South Derbyshire Community Heroes: Roll of Honour project (£2,026.86).
- (c) allocated match funding to support a bid for a Beat the Street project (£3,000).

SDP/38. FEEDBACK AND FUTURE AGENDA ITEMS

No items were raised for future Agenda Items.

The Chair thanked everyone for participating and closed the meeting at 11:57am.



Agenda Report to the Board

Item 6. THEME GROUP UPDATES: QUARTERS 1 & 2 (APRIL – SEPTEMBER 2021)

1.0 Purpose of Report

1.1 To inform the Board on the Theme Groups work to date.

2.0 Detail

2.1 Performance reports for each of the Theme Groups are attached as Appendix A. These provide a summary of progress against priorities in the Sustainable Community Strategy, note issues that the Partnership could add value to, and highlight any action required of partners such as attendance at or promotion of an event.

Contact: Mike Roylance, South Derbyshire District Council
Tel. (01283) 595725
Email. mike.roylance@southderbyshire.gov.uk

**QUARTERS 1 & 2
(APRIL – SEPTEMBER 2021)**

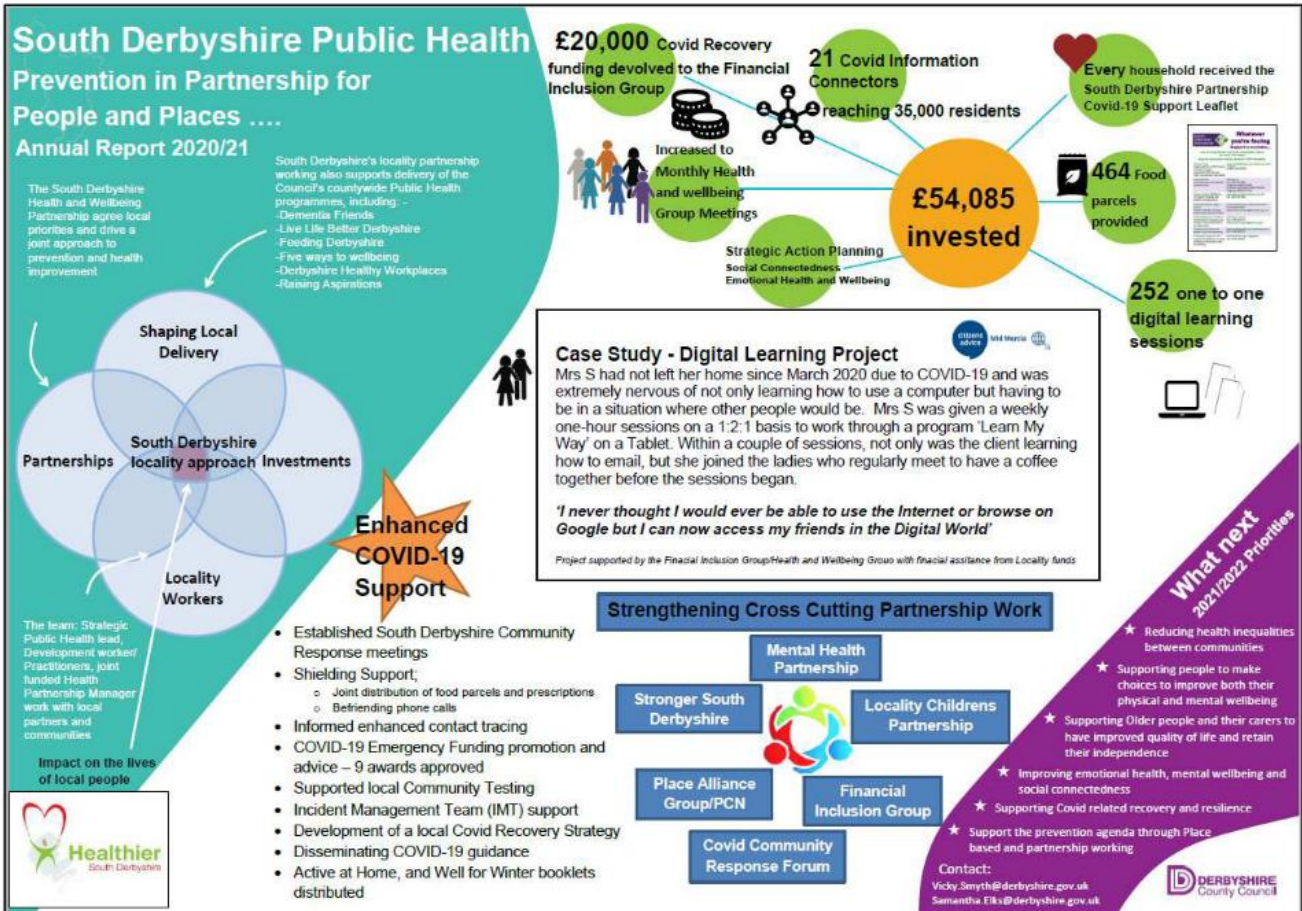
HEALTHIER COMMUNITIES

Highlight summary of progress against priorities in the Sustainable Communities Strategy.

Health and Wellbeing Group Annual Report 2021

Inserted below is the South Derbyshire Health and Wellbeing Group annual report, which highlights key successes delivered by the group over the last year.

Key achievements include the local provision of food and prescription deliveries to the shielding cohort, the Covid-19 support leaflet (delivered to every household in the district) designed to provide information to anyone effected by the pandemic, and the Covid Information Connectors project which aims to support trusted members of the community to share information and messages about Covid-19 with their communities. This work has been facilitated by significant strengthening of cross cutting partnership work across the system.



For further information please contact [Vicky Smyth](mailto:Vicky.Smyth@derbyshire.gov.uk)

Emotional Wellbeing of Children and Young People

The partnership has received £100,000 of additional Public Health investment to help improve the emotional wellbeing of children and young people. This funding will assist the partnership to develop a preventative approach that will enable the expansion of mental health awareness, promotion of protective factors, early identification, early intervention, and support for the emotional wellbeing of children and young people through a place-based approach.

The South Derbyshire Mental Health Partnership has been established and will provide oversight of this investment, and lead development of an action plan to identify and address priorities in the local area. Engagement with young people is taking place through outreach work delivered by Safe & Sound, and soft intelligence gathered by local partners to capture the voice of children and young people. The Locality Children's Partnership is also supporting this work stream.

For further information please contact [Samantha Elks](#)

Enhanced Vaccination Plan

The enhanced vaccination plan is intended to increase vaccination uptake in local areas with significantly lower vaccination uptake and higher case rates. This may be through providing additional capacity for delivering vaccinations and considering the barriers as to why people may not be coming forward for vaccinations. The plan guides stakeholders through the three main considerations around vaccine hesitancy (confidence, complacency, and convenience) and potential actions that could be taken locally to address barriers to vaccination.

As a result, the importance of communities hearing accurate messages about vaccinations from trusted voices (professional and non-professional) was highlighted. Therefore, multiple vaccine briefing sessions have been held virtually for both Health and Social Care Staff and Non-Healthcare professionals to increase their confidence on the topic and to provide an opportunity for questions to be asked.

Partners have also formed a South Derbyshire Vaccination task and finish group to collaborate across the system to facilitate work in areas with lower uptake.

For further information please contact [Vicky Smyth](#)

Live Life Better Derbyshire (LLBD) and Leisure Centre Offer

To improve the offer of physical activity options available to South Derbyshire residents, an enhanced offer has been confirmed between South Derbyshire District Council, Live Life Better Derbyshire (LLBD) and the local leisure provider Active Nation (AN).

The enhanced offer will be available to residents that have either been referred to, or have used the self-referral method within the LLBD online system. Individuals referred by LLBD are entitled to 4 weeks open access to all facilities available throughout both AN sites within the District. The offer will include free access to gym, swim, classes including Chair Based Exercise and community delivered sessions such as Walking Football and Back to Netball.

This offer has been made possible through the fantastic partnership of LLBD, SDDC and AN, creating an opportunity for those residents that are most in need. The monitoring of this offer will be undertaken by LLBD through the participant activity tracker and will operate a voucher system for those referred.

For Further information please contact [Lee English](#)

CHILDREN & YOUNG PEOPLE

Highlight summary of progress against priorities in the Sustainable Communities Strategy.

During the lock down and post due to Covid 19 Children Services have remained delivering an essential service which has involved home visits and safety plans for the most vulnerable young people and families in our communities.

South Derbyshire and Dales Children Services Key Data 11/10/21 No. of children who/on:

Children in Care	113
Child Protection Plan	151
Children in Need	364
Early Help Services	137

Group work Activities:

- Parenting Support Groups
- Children Centre Groups
- Youth Groups

Staff have been undertaking community work, home visits, supervising family time and youth work while being split working from home and being based in a Buildings. Children Services currently have 4 buildings open with Covid Health and Safety measures in place:

- Rink House - staff
- Elms – staff and families
- Woodville Children Centre – staff
- Etwall – staff and families

There are plans underway for staff to return to the office – these are under review.

During Summer 2021 there was a co-ordinated response to a significant knife crime incident in our community which unfortunately resulted in a young person's death. This involved all agencies working together, Police, Children Services, Community Safety, Local District Council, Health and Schools. Various mapping exercises were undertaken, intelligence gathering, strategies meetings and follow up with young people and families. Additional work was undertaken in schools, Assemblies and Group Work sessions as a preventative and reassurance measure to the incident.



The Locality and Children Partnership (which pulls all agencies together) two aims – School Readiness and Emotional Well – Being of young people is active in the area with full representation amongst all agencies. The themes covered links into the wider agenda of promoting Social Mobility in the area and is also responsive to significant events such as Covid 19 and Knife Crime incidents.

Staff and Recruitment remains an issue amongst Social Work teams and there are various measures planned to increase retention of staff within this sector.



SAFER COMMUNITIES

Highlight summary of progress against priorities in the Sustainable Communities Strategy.

Young people are more aware and informed about risks to their safety from child sexual exploitation, sexting and drugs:

People Express have made an excellent film of the first year of their 'Passport to Music' project which has been part funded by the Communities Team's Safer and Stronger Neighbourhoods funding stream. <http://www.people-express.org.uk/passport-to-music/>

The project is an inclusive music programme providing 2 years of fortnightly workshops, led by professional tutors, in different genres of music for excluded, vulnerable and 'at risk' young people. The project has worked with 15 young people in Year 1 and will aim to work with up to 10 disabled young people in Year 2.

The project is part of People Express' response to the report on social mobility through education that placed the district's young people as most at risk in England of not fulfilling their potential. Safer and Stronger Neighbourhoods funding has contributed £1,500 towards the project.

Following the **tragic murder of Benjamin Orton** in June, agencies were very quick to work together in the weeks following the murder, to ensure there were no further incidents and to offer some reassurance to the public.

Some of the Partnership work in response included:

- A meeting with the 3 Swadlincote based Secondary Schools, Childrens services and police took place to identify what input could go into schools to talk to pupils about knife crime and what support could be put in place to assist children effected by the incidents, both those that knew the victims/offenders and more generally. Knife crime input by police and a knife crime expert. A reassurance video with factual information produced by the Chief Constable was also shown to all pupils.
- Extra Police patrols put in place in parks and around the Town Centre.
- Info sharing and mapping meeting took place with Schools, Childrens Services, ASB, YOT and Police to discuss individuals associated to the victims and offenders, over 30 police follow up visits took place to the individuals identified as associates.
- Police CCTV cameras installed in Eureka Park where the second incident took place.
- Multi Agency Tactical Meetings set up by police which identified risks and objectives (see attached) These went on for a number of weeks.
- Police Gold Group meetings (Preventions and Partnerships) also arranged by the police
- Comms Plan produced through the Gold Group meetings with press releases which were shared by a number of agencies.
- Outreach work provided by Safe and Sound in the parks in Swadlincote – they were visiting the area already to discuss Child Exploitation but agreed to have conversations with young people about the incidents and the impact this had, had.



Safe and Sound have continued to carry out their youth outreach work in the urban parks over the summer months. The outreach work has proved hugely successful, especially since the recent tragic incidents and young people have been talking in great lengths about their fears, needs, and what life is like living in Swadlincote. The information gathered on visits is recorded and reported back to agencies such as the Police, SDDC Cultural Services and Active health and Wellbeing teams CSP, and DCC Childrens services. Safe and sound are a charity that educate young people on the dangers of exploitation, for more information visit their website www.safeandsoundgroup.org.uk

More people feel safe and secure in their home and in the community particularly those who are most vulnerable:

Pub Watch Meetings

The local Police Inspector Chris Thornhill attended the September Swadlincote Pub Watch meeting, along with the usual attendees which includes officers from the Police and Council Licensing Teams, the Communities Team and reps from local public houses. Useful advice and information was passed on by the Licensing teams and a Banning Order was issued to a male for assaulting bar staff and two warning letters were issued to individuals who refused to leave a premise and were suspected of drug taking in the toilets.

CCTV in Swadlincote

Work has been completed to replace the Swadlincote Town Centre CCTV radio network. The old system had failed and a reliable wireless network has been installed with significantly increased capacity. 5 new CCTV Cameras have also been installed on the outside of the Civic Offices overlooking the car parks. Two new internal cameras have also been added on the inside of the building around public access areas in the reception.

A meeting took place on Wednesday 28th July at **Foremark Reservoir** to discuss the issues that are occurring inside and outside the site on busy days. The local District Councillors were in attendance along with Parish Councillors, residents, police, Seven Trent and DCC highways. An action plan has been drawn up which includes fencing off the beaches, and the development of a Public Space Protection Order which will be implemented in Spring 2022 should the issues return.

The CSP has agreed to fund two **new speed cameras** for the police to use with local South Derbyshire Community Speed Watch Groups. There are a total of 11 Community Speed Watch groups in South Derbyshire, three of these are new schemes that are awaiting training before they can become operational.

Safer Homes Scheme – Community Building Security

As well as providing security measures to domestic households Mark (the operative) will soon be providing additional security to both Eureka Bowls Club and Gresley Old Hall to prevent youths climbing on the roof of the two buildings and causing damage. Mark will also be joining us at the Hate Crime Awareness event we are holding at Stenson Community Centre on 11th October.



Any action required of Partners i.e. attendance or promotion of an event.

Stop Hate UK

This week is National Hate Crime Awareness Week (9th – 16th October). This week of action provides the agencies with the opportunity to raise awareness and engage with the public in tackling and preventing hate crimes, along with highlighting support for those in need. Within Derbyshire there are a number of agencies that can offer support to anyone who has been a victim or witness to a hate crime.

Stop Hate UK <https://www.stophateuk.org/> and CORE Derbyshire Victim Services <https://derbyshirevictimservices.co.uk/> / 0800 612 6505 can offer support, advice and ways to report the incident without having to talk directly to the police.

If you do wish to report a hate crime to Derbyshire Police please visit the Police hate crime reporting page on the force website: <https://www.derbyshire.police.uk/advice/advice-and-information/hco/hate-crime/how-to-report-hate-crime/> or call 101 or 999 in an emergency.



Safer Homes Scheme

The scheme works by giving advice on crime prevention and home security. In some cases including for victims of crime and domestic abuse, they can install additional door and window locks and other appropriate equipment free of charge.

The scheme is funded by the South Derbyshire Community Safety Partnership and is operated on a day-to-day basis by South Derbyshire CVS.

Referrals for the scheme can come from any of the following:

- Social Services - Adult Services
- South Derbyshire District Council
- Derbyshire Police
- South Derbyshire Primary Care Trust
- Housing Associations
- Citizens' Advice
- South Derbyshire CVS
- Self-referrals if over 60's, disabled or vulnerable



For further information or to make a referral you can contact South Derbyshire CVS either by email: projectsupport@sdcvs.org.uk or call 07458 304316.

The Communities Team are advertising for a **Part time Community Safety Officer** (22.5 hours per week). The successful candidate will lead on facilitating the work of the Community Safety Partnership, ie; working with partners to reduce crime and disorder, leading on chairing Local Action Group meetings, responding to Cllrs and Members of publics Crime and disorder issues and delivering preventative and educational initiatives.

For more information visit the Derbyshire Jobs Website:

<https://jobs.derbyshire.gov.uk/leisuretourismcommunity-corporate-resources-directorate-community-safety-officer/27423.job>.

The deadline for applications is 25th October 2021.



STRONGER COMMUNITIES

Verbal Report.



SUSTAINABLE DEVELOPMENT

Highlight summary of progress against priorities in the Sustainable Communities Strategy.

COVID-19 Population Restoration and Recovery: Anticipating the future direct and indirect negative impacts of the pandemic for Derbyshire (Derbyshire County Council)

Issues highlighted by the report include the following:

- A fall in GDP as Government restrictions reduced economic activity. The strongest fall has been seen in consumer-facing services (retail trade, food, travel and transport, and entertainment and recreation).
- Derbyshire's economy was impacted because strong sectors such as transport and manufacturing were squeezed early on. However, economic 'scarring' - long-lasting damage to individual and local economic situations may mean the areas experiencing difficulties in the shorter-term are not those experiencing consequences further down the line. South Derbyshire experienced a sharp drop in Gross Value Added.
- For both men and women, the highest mortality rates nationally have been in 'Caring, Leisure and Other Service Occupations,' 'Process, Plant and Machine Operatives' and 'Elementary Occupations.'
- Unemployment forecasts vary and are dependent on the length and severity of the pandemic, but all point to increases in unemployment.
- Future considerations: Those with a higher education level and higher earnings are more likely to be able to work from home; Low earners are found in sectors that may struggle to recover; and, long term unemployment is anticipated in areas with high pre-existing unemployment and low skill levels.

Youth unemployment in South Derbyshire has risen from 2.9% in March 2020, peaking at 7.7% in June 2020 and then dropping to the current level of 4.9% (370 individuals; GB 6.9%).

Unemployment

South Derbyshire local authority area (Claimant Count).

Aug 20	Jun 21	Jul 21	Aug 21	Change on month	Change on year	GB Aug 21
4.1%	3.1%	3.0%	3.0%	-1%	-28%	5.3%
2,840	2,155	2,075	2,050			

There are currently over 1,800 jobs available within a ten-mile radius of Swadlincote, including a number of large-scale seasonal recruitment programmes. Several new employers at East Midlands Gateway are recruiting significant numbers of staff. Patronage of the Airway9 bus service between Swadlincote, Melbourne and East Midlands Airport/Gateway has recovered and is now above pre-Covid levels.



Financial Inclusion Group

The Universal Credit (UC) uplift ceased at the end of September with any UC payment being made after 13 October 2021 not including the uplift. This will affect approximately 5.2 million households nationally, with around 50% of those only claiming UC after the pandemic began in March 2020.

These households will see a decline in their income of approx. £1,000 per annum. For low-income households this will coincide with rising energy and food prices, as well as furlough coming to an end, and a planned National Insurance increase in April 2022. This is expected to have a knock-on effect on local services such as the foodbank, homelessness, mental health, debt and financial capability partners.

In advance of the change, the Financial Inclusion Group have been raising awareness amongst individuals that the partner organisations come into contact with, encouraging them to consider the impact this is going to have, and making referrals to support organisations. Service providers, in particular debt/money management, have been considering the impact of an increased demand for their services.

South Derbyshire Business Advice Service

The Service has delivered 180 advice sessions in the first half of 2021/22, including to both new starts and established businesses, together with a virtual 'Thinking of Starting a Business?' workshop.

Business Start-Up Programme Launched

In recognition of the economic impact of the COVID-19 pandemic a new scheme has been launched to support those wanting to set up their own business in Derbyshire. The Business Start-Up and Business Support Grant Scheme is open to people who live in Derbyshire who are starting their own business, or have set up a business in the last year.

A team of local expert business advisors are in place to offer free advice and support, with funding of up to £10,000 per applicant also available. Networking opportunities and help in securing a wide range of services necessary to help entrepreneurs turn their venture into a success are also part of the support package on offer.

A funding pot of £550,000, which has been raised through Derbyshire's involvement in the Government's Retained Business Rates Pilot scheme, has been set aside to fund companies, with a range of grants available over the next 2 years. To find out more go to www.derbyshire.gov.uk/VisionDerbyshireBusinessSupport

Covid Business Support Grants

To date, South Derbyshire District Council has distributed over £24 million of grants to smaller businesses in the area. Two new grant programmes are now operating to distribute the latest tranche of funding:



- Events and Festivals Summer Rescue Scheme - one-off grants to SMEs based in South Derbyshire, including event and festival management companies, wedding and event organisers, suppliers to the performing arts, festival, weddings and funerals industries, rated venues whose main business is an event venue and independent travel agencies.
- Discretionary Restart Grant Scheme Round 2 - one-off grants to SMEs based in South Derbyshire, or SMEs who trade primarily in South Derbyshire, that were affected by the lockdowns. This could include businesses that were required to close and businesses that were able to remain open. Businesses that have already received a Restart Grant (either rated or discretionary) in Round 1 may not apply. Businesses cannot apply for/be awarded both a Discretionary Restart Grant (Round 2) and an Events and Festivals Summer Rescue Grant.

Visit South Derbyshire website

A new website was launched during English Tourism Week to promote South Derbyshire, and tap into the growth in staycationing. The website features businesses in visitor economy sector, and aims to attract day and overnight visitors, and to encourage residents to spend their leisure time in the area. The website can be found at: www.visitsouthderbyshire.co.uk

Timber Festival

The Timber Festival created by the National Forest Company and award-winning festival producers Wild Rumpus, took place at Feanedock, on the Leicestershire/Derbyshire border in July. The event is a celebration of trees and forests, in a place where trees have led the transformation of a former mining landscape, Timber encourages audiences to re-examine their relationship with the natural world. Attendees are invited to join artists, musicians, performers and writers, as they respond and react to the forest in bold and exhilarating ways.

Welcome Back Fund

South Derbyshire has received a share of £56 million from the European Regional Development Fund (ERDF). The Welcome Back Fund has been established to support and promote the safe and successful reopening of the public environment for local trade and tourism, including running publicity campaigns and assisting with events that will boost footfall and encourage people back into the high streets and thereby supporting local businesses. The Fund can also provide COVID-19 signage and social distancing measures in public spaces, and is currently backing South Derbyshire's COVID Marshall service.

SME Climate Hub

Ahead of COP26, the Government has launched the SME Climate Hub for small and medium-sized enterprises (SMEs) providing a one-stop-shop to make a climate commitment and access best-in-class tools and resources. The tools and resources provide support to businesses in regard to measuring their emissions, developing a climate strategy, reducing their emissions and the emissions in their value chain, and exemplifying complementary offset projects. The Hub can be found at: www.smeclimatehub.org



Any action required of Partners i.e. attendance or promotion of an event.

To raise awareness of the initiatives highlighted above and make referrals, including:

- Covid-19 Business Support Grants

To promote preventative and responsive services that will support those affected by the changes to Universal Credit and conclusion of the Job Retention Scheme (furlough), including:

- advice on debt and personal financial planning.
- access to the food bank and related services.
- assistance in reducing energy costs (eg. Green Homes Grant).
- getting into work, training or volunteering.



**Agenda Report to the Board
Item 7. PARTNERSHIP BUDGET UPDATE**

1.0 Recommendations

- 1.1 To support a funding award of £500 for the 50+ Survey.

2.0 Purpose of Report

- 2.1 The District Council acts as accountable body for the South Derbyshire Partnership. This report provides an overview of the Partnership's current financial position.

3.0 Detail

- 3.1 The Partnership has received the following funding request (See Appendix for further details).

50+ Survey

Project Overview:

To conduct a 50+ Survey across the District to understand activity levels, health and wellbeing of residents and barriers to engagement of the 50+ age group, alongside getting an updated perspective on people's perceptions of crime and disorder, how safe they feel in their local environment and in their homes and how they would like to receive information with regards to this agenda.

The age demographic of the District is ageing and growing, with the 56+ population anticipated to increase by 52% by 2028 (Local Plan data). With this in mind partners have decided to re-conduct the survey that was previously undertaken in 2008 and 2015 to ascertain an up-to-date picture of the above topics.

Objectives:

- To survey the 50+ population of South Derbyshire.
- To achieve at least 350 survey returns.
- To check and challenge national data sets and ascertain if this data reflects very local needs.

Outcomes:

To gain insight and data for this age group and to use this to inform the shaping of local services, to ensure they are fit for purpose. And where practicable implement these service changes.



Note:

Please note that having previously been postponed due to the pandemic, the 50+ Survey is already underway, due to time constraints and the timing of the Partnership Board meetings. If the grant were not approved, the funding for the incentives would be found from the Active Communities and Health Budget, however this would take away resource from the delivery of other 50+ initiatives.

- **Beat the Street**

- 3.2 Funding was previously allocated to support a bid to deliver the Beat the Street initiative in South Derbyshire. Unfortunately, Sport England did not approve the bid and without their support the project is not able to go ahead. More bids were received than the available funding and amongst the criteria, areas with higher levels of deprivation were given greater priority. The funding set aside for this project has been un-allocated and will now be available for other initiatives.

2021/22 Distribution of Funds

- 3.3 South Derbyshire District Council has provided £10,000 of funding to the Partnership for 2021/22.

2021/22	£
Income	
Balance from previous years	7,424.05
Underspend from Community Awards 2019/20	1,526.80
SDDC contribution for 2021/22	10,000.00
TOTAL INCOME	18,950.85
Expenditure	
• Project Awards:	
ALICE Project (South Derbyshire CVS) – match funding for £3,500 from Derbyshire County Council (Public Health Locality Funding)	1,500.00
South Derbyshire Community Heroes: Roll of Honour (SDDC) virtual community awards – match funding to be sought by SDCVS through sponsorship.	2,026.80
• Project Proposals:	
50+ Survey (SDDC/SDCVS) – matched in-kind by staff time.	500.00
TOTAL EXPENDITURE	4,026.80
BALANCE	14,924.05

- 3.4 A number of the projects supported by the Partnership also attract match funding contributions from other public, private and voluntary/community sources, in particular Public Health Locality funding from Derbyshire County Council.



4.0 Financial Implications

4.1 Supporting the proposed project will leave the Partnership with a positive balance of £14,924.05

5.0 Conclusions

5.1 The Partnership is able to directly and indirectly influence significant expenditure taking place in the District, through its own budget and the match funding this attracts and, in particular, through the involvement of the Theme Groups in allocating resources and influencing organisations' activities in the local area.

Contact: Mike Roylance, South Derbyshire District Council
Tel. (01283) 595725
Email. mike.roylance@southderbyshire.gov.uk

Appendices:

- 1. Application Form: 50+ Survey**



1. Applicant Details

Name: Hannah Peate Job Title: Active Communities and Health Partnership Manager

Name and address of organisation receiving funding: SDDC / CVS

Contact Tel Number: 01283 595973 E mail: hannah.peate@southderbyshire.gov.uk

2. Project Details

Title of Project: 50+ Survey

Please give a brief summary of the action to be taken and the main objectives:

Brief description of the Project: (eg. target locality, target group and how you will deliver the programme)

The Project is to conduct an updated 50+ Survey for the residents of South Derbyshire with regards to their lifestyle and their safety. This application asks for £500 towards the project costs to support the offering of incentives through retail vouchers to those who respond to the Survey and wish to be entered into a prize draw.

Aim:

To conduct a 50+ Survey across the District to understand activity levels, health and wellbeing of residents and barriers to engagement of the 50+ age range; alongside getting an updated perspective on people's perceptions of crime and disorder, how safe they feel in their local environment and in their homes and how they would like to receive information with regards to this agenda.

The demographic of the District is ageing and growing, with the 56+ population anticipated to increase by 52% by 2028 (Local Plan data). With this in mind, partners have decided to re-conduct the survey that was previously undertaken in 2008 and 2015 to ascertain an up to date picture of the above topics.

Objectives:

- To survey the 50+ population of South Derbyshire.
- To achieve at least 350 survey returns.
- To check and challenge national data sets and ascertain if this data reflects very local needs.

Outcomes: (e.g. improved mental wellbeing)

To gain insight and data for this age group and to use this to inform the shaping of local services, to ensure they are fit for purpose. And where practicable implement these service changes.

In turn gaining greater participation and engagement of people in their local communities, reducing barriers and enabling people to feel safer (if need shows) in their own home and local area.

Insight and data to be shared to SDP partners where applicable to inform services, potentially apply into funding and deliver against needs identified.

Outputs: (e.g. number of beneficiaries, number of sessions)

- Number of surveys completed
- Number of prizes awarded



Insight report written and presented

3. What are the Project costs?

Breakdown of total Project costs:

Project action planning, implementation, results and conclusions £2,500
Design and print of headline results £500
Incentive prizes £500

Total Cost £3,500

How much funding towards the Project is sought from the South Derbyshire Partnership and what would this be spent on?

£500 for incentives for survey completion, which will be allocated as 10 x £50 vouchers.

*Please note that having previously been postponed due to the pandemic, the 50+ Survey is already underway, due to time constraints and the timing of the Partnership Board meetings. If the grant were not approved, the funding for the incentives would be found from the Active Communities and Health Budget, however this would take away resource from the delivery of other 50+ initiatives.

4. Will the grant be used for match funding?

Yes (please circle)

If yes, how much funding will be drawn from elsewhere (and the source)?

The match funding comes from SDDC and in the form of staff in-kind time to the management of the Project.

5. Please explain how the need for this Project has been determined?

The Project has been determined through the need to support the aging population of the District as highlighted in the Local Plan. It is also a key priority within the Sustainable Community Strategy 2009-2029 as highlighted above and within the Active South Derbyshire Strategy 2017-2022.

It will also act as a refresh to the previous surveys conducted.

6. How will Project be monitored and evaluated?

The Project will be monitored through a steering group with CVS and SDDC officers ensuring the implementation of the action plan.

The Survey will be conducted, results collated and a report with the data and intelligence collated together, along with some key recommendations that may be determined in the process.

7. Please provide details of any other funding your organisation currently receives from South Derbyshire District Council?

**SOUTH
DERBYSHIRE
PARTNERSHIP**



CVS currently get funding through a service level agreement supporting their core costs. The 50+ Survey has not asked for some years for any money into a research project that will prove useful to a wide variety of SDP partners.

Please complete and return to;

Mike Roylance
Economic Development and Growth
South Derbyshire District Council
Civic Way, Swadlincote, Derbyshire DE11 0AH

Email: mike.roylance@southderbyshire.gov.uk
Tel: 01283 595725