

Annexe No.1

teamwork

Reducing Crime in our Community

South Derbyshire Crime and Disorder Partnership

South Derbyshire Crime and Disorder
Partnership

End of Year Report 2002-2003

SOUTH DERBYSHIRE CRIME AND DISORDER PARTNERSHIP

1.0 PURPOSE OF THE REPORT

- 1.1 To provide the South Derbyshire Crime and Disorder Partnership with an overview of achievements during 2002/2003.

2.0 YEAR ONE OF THE 2002/2005 STRATEGY

- 2.1 Following the successful launch of the Strategy and Year One Action Plan in March 2002, the Partnership has continued to develop, delivering a number of successful initiatives in South Derbyshire (please refer to **Section 4** for more information).
- 2.2 The membership of the Partnership has increased to include representatives from Connexions, Trading Standards, Youth Offending Service, SPODA and the Youth MP for South Derbyshire.

3.0 PARTNERSHIP STRUCTURE

3.1 Partnership Support Team

The support team now consists of Michelle Collins (Community Safety Officer), Emma Julian (Community Drugs Officer), Pam Gerry (Administration Assistant), Stuart Batchelor (Community and Leisure Development Manager) and Sgt Steve Wilson (Police Liaison Officer) who replaced Sgt Julie Sproson in December 2002.

The team also has the valuable resource of PC Eileen Banton (Crime Reduction Officer). In addition, Eileen spends half a day a week at the District Council Offices working directly with the Planning department to assist them with new planning applications ensuring that 'new build' corresponds with 'Secured by Design' recommendations.

The Partnership continues to work closely Derbyshire County Council and are supported by Sue Davis (County Community Safety Officer) and Wendy Churcher (Assistant Community Safety Officer).

3.2 Action Teams

The Action Teams have continued to work hard to address and deliver the objectives in the Year One Action Plan. In addition, a number of Sub Groups have been created to tackle particular issues and projects, they are:

- **Racial Harassment** (Violent Crime)
- **Licensing** (Violent Crime)
- **Mediation** (Anti-social Behaviour)
- **Neighbourhood Wardens** (Anti-social Behaviour)
- **Motorcycles** (Anti-social Behaviour)
- **School Safety Event** (Anti-social Behaviour)
- **Liberation Day** (Community Engagement)

Each Action Team has a dedicated lead officer from the Support Team. The officer works closely with the chair of the Action Team ensuring that appropriate paperwork is available for each meeting and action plans and monitoring / evaluation are updated regularly.

4. ACTION TEAM UPDATES

4.1 Domestic Burglary

Over 50 burglar alarms have been installed in victims' homes, which have deterred further burglaries. Burglary reduction packs have been delivered to every house in the District aimed at making homes more secure. The packs also included a voucher for residents to obtain a free mini personal alarm, tamper proof labels and a property-marking pen.

In excess of 200 sheltered housing homes have been secured with door entry systems, memo minders and security lights.

The 'Foot in the Door' campaign is a national campaign run by the Home Office. During November 2002 the County Council Community Safety Unit, Trading Standards Mobile Unit and the Partnership teamed up to offer advice and information about local target hardening schemes in the District. 'Foot in the Door' aims to protect elderly people from bogus doorstep traders and distraction burglaries.

The Partnership is also allocating funds to the Probation service to assist in the integration of a persistent offender scheme within the District. A number of offenders have been identified, ranging from

those currently in detention or on remand, to those currently active in the community. The scheme is similar to the one set up in Derby City and which has proved to be most successful.

4.2 Auto crime

The Partnership has secured £38,000 funding to install CCTV schemes at locations in the District where car crime is or could be a problem. These locations include the two Welcome Break Service Stations (Shardlow A50), Little Chef (Willington), Rosliston Forestry Centre and the Green Bank Leisure Centre (Swadlincote).

In addition, the Partnership has joined forces with Auto Windscreens to offer a free etching service to anyone presenting a voucher, which were published local newspapers.

A cross border seminar for car park operators is being planned to share intelligence and good practice.

4.3 Anti-social Behaviour

The Partnership has been working on a number of projects that will result in the provision of a basketball court in Linton, a BMX and skateboard park in Swadlincote and a youth shelter in Willington.

Woodville Parish Council has worked closely with the Partnership to find funding for street lighting and fencing so that local people feel safer about walking through the recreation grounds at night. Work is also underway to resolve the problem of motorbikes being used illegally in the grounds.

The risk assessment pilot project is progressing well. The project has highlighted areas that cause concern for communities alongside identifying those areas that attract crime. Environmental work is being carried out to address these problems, this includes, extra litter bins, street lighting, planting, signage and cutting back overgrown shrubs etc.

A Theatre company, QDOS were commissioned to put on a production for local schools. The production addresses issues around anti-social behaviour, drugs awareness and underage drinking. A video has also been produced and a web site developed to compliment the production.

Sub groups have also been set up under this Action Team to address particular projects / problem areas, they are:

- Schools Safety Event
- Motorcycles
- Mediation

4.4 Substance Misuse

Operation Night, a very successful drugs operation funded by Communities Against Drugs (CAD) resulted in numerous arrests and convictions and has had a major impact in the disruption of the districts drug markets.

Joint partnership working with SPODA (Support for parents of drug abusers) has seen the appointment of a part time worker for South Derbyshire. The aim of the worker is to support the parents or carers of those involved in drug abuse.

The Partnership has successfully secured funding from Derbyshire County Council Community Safety Grants to produce a video demonstrating the process of developing an integrated and effective substance misuse education programme, at the same time complying with the requirements of the Health Promoting Schools Award: Key Area D (substance misuse). The video will also become a resource to share across all South Derbyshire's primary schools.

The South Derbyshire Council for Voluntary Service (CVS) was commissioned to undertake a consultation exercise in Newhall. The consultation focused upon Drugs and Burglary problems, 153 residents were interviewed and recommendations from the consultation findings were implemented. One major outcome was the setting up of the Newhall and Midway Local Crime Reduction Group.

A drug awareness seminar is being planned to take place in Newhall, whereby giving local people the opportunity to find out more about the problems of drug abuse.

CAD support and funding also assisted in the provision of a Mobile Youth Facility which was launched in September 2002.

4.5 Violent Crime

The Police and Trading Standards have completed a successful multi-agency test purchasing operation. The team concentrated on licensed premises selling alcohol, cigarettes and butane gas to minors. The operation resulted in convictions, with one business having their licence revoked. This type of operation will be repeated in the future.

Sub groups have also been set up under this Action Team to address particular projects / problem areas, they are:

- Racial Harassment
- Licensing

4.6 Domestic Violence

A conference raising the awareness of Domestic Abuse proved most successful and was well received by its audience of health practitioners, police and key agencies.

Effective data sharing protocols have been produced to share data with key partners and a Training subgroup has been set up to look at training packages.

A successful theatre production called 'Big Boys Don't Cry' - featuring males as the victims of domestic abuse has been introduced to the Citizenship curriculum at William Allitt School. Further awareness work is also being undertaken with staff in primary schools.

£700,000 has been allocated for a Safe House, which will be opening early in 2004.

4.7 Community Engagement

The aim of this Action Team is to address the 'fear of crime' in the community. Therefore, one of the key drivers is to consult with the community to ascertain their views in relation to crime and feelings of safety.

Members of the Action Team are responsible for ensuring that Partnership initiatives are well publicised across a range of media's. Development work is underway to provide the Partnership with a

website; this will also link with other countywide community safety websites.

Local Crime Reduction Groups have been established in Newhall and Midway, Willington and Melbourne. These pilot groups are seeking to get local people to identify their problems and empower them to produce solutions. Each group is developing its own action plan.

The Partnership has produced two newsletters during the year and these have been distributed throughout the District.

Liberation Day - a special programme of activities for elderly people is being planned and will be held at Gresley Old Hall, the event will provide entertainment and advice on crime prevention. The aim of the Liberation Day is to enable older people to enjoy life without being trapped by the fear of crime.

4.8 Summary of completed actions in the Year One Action Plan

The Year One Action Plan consisted of 49 actions across the seven Action Teams.

35 actions have been completed, representing 71% success rate, the remaining 14 actions have incorporated into the Year Two Action Plan. Table 1 shows the number of actions per Action Team.

Table 1 - Completed Actions in Year One

Action Team	No of Actions	Completed Year One	Ongoing in Year Two
Domestic Burglary	9	7	2
Autocrime	5	4	1
Anti-social Behaviour	13	8	5
Substance Misuse	7	5	2
Violent Crime (includes Domestic Violence)	7	5	2
Community Engagement	8	6	2
Total	49	35	14

5. PARTNERSHIP DEVELOPMENT

5.1 Self Assessment

South Derbyshire was one of the twenty Partnerships chosen in the East Midlands to take part in the Home Office Self-Assessment Pilot in December 2002.

The main aim of conducting a self-assessment process is to promote continuous improvement in both strategic and operational delivery through identifying gaps and areas that require development. The process provided an opportunity for the Partnership to assess its structures, policies, activities and performance against a base of fifty good practice criteria establishing good working practices (e.g. Business Excellence model).

The findings from the Self Assessment process has provided the Partnership with a number of key areas for improvement and this will be addressed in the Partnership Development Strategy. The Home Office will be finalising the assessment process model during 2003 with a view to making this a strategic requirement for all Partnerships on a yearly basis.

5.2 Partnership Development Strategy - Partnership Development Plan

Year One of the South Derbyshire Crime and Disorder Strategy saw the conception of the Partnership Development Strategy. The recommendation for a Partnership Development Strategy originated from the findings in the HMIC Thematic Report "Calling Time on Crime". The report suggests that:

*"Each Partnership considers the introduction of a **partnership development plan** that will seek to outline how the identified gaps can be closed and how the partnership will continuously improve over a period of three to five years"*

The self assessment process has continued to broaden the requirements of the Plan, whereby identifying the need to develop the following new strategies during 2003/2004:

- A Funding and Resourcing Strategy
- A Training and Development Strategy

6. RECORDED CRIME / COST OF CRIME

6.1 Table 2 highlights the year end figures for 2002/2003 and identifies the crime levels for the Partnership's priorities:

Table 2 - Recorded Crime

Priority	2001/02 level	2002/03 level	Target	+ Above Target - Below Target
Burglary Dwelling	456	396	388	-8
Autocrime	953	926	877	-49
Violent Crime	480	998	450	-548
Criminal Damage	802	1170	762	-408
Calls for Service	Awaiting information from Police			

The reduction of Domestic Burglary and Autocrime are also key priorities for the Government. Therefore, by comparing the crime levels for 2000/01 and 2002/03 the Partnership has successfully achieved the following reductions.

Domestic Burglary = a reduction of 13%
Autocrime = a reduction of 3%

Whereas across Derbyshire, crime levels for Domestic Burglary has risen by 27% and Autocrime has risen by 3%.

6.2 **Cost of Crime in South Derbyshire**

The Home Office has recently established a format that tries to estimate the cost of different types of crime. Although the South Derbyshire Crime and Disorder Partnership believes that tackling crime is not just a matter of cost, it is important to identify the overall cost in order to begin to understand the financial impact on victims of crime.

Table 3 shows the cost of the significant categories of crime when the government costs are applied.

Table 3 – costs of crime in South Derbyshire 2002/03

Crime Type	*Average Cost estimated by Home Office format - £	No of recorded cases in South Derbyshire	Total Cost £
Burglary Dwelling	2,300	396	910,800
Burglary Non Dwelling	2,700	719	1,941,300
Criminal Damage	510	1170	596,700
Theft	340	Fraud 357 Handling 14 Other theft 888 Total 1259	428,060
Theft from a shop	100	154	15,400
Vehicle Crime	Theft from a vehicle 340 Vehicle theft 890	Theft from a vehicle 656 Vehicle theft 270	463,340
Violent Crime	Sex offence 19,000 Robbery 4,700 Assault 18,540	Sex offence 59 Robbery 41 Assault 898	17,964,000
Total			£22,319,600

7. PARTNERSHIP BUDGET

7.1 Please refer to Appendix One for a breakdown of the Partnership Budget for 2002/2003.

8. COMMUNITIES AGAINST DRUGS (CAD)

8.1 Please refer to Appendix Two for a breakdown of Communities Against Drugs projects and initiatives for 2001/02 and 2003/03.

9. MONITORING AND EVALUATION

9.1 The Partnership has clear and concise monitoring and evaluation processes in place. These processes inform partners on a month by month basis and ensure targets are being adhered to. The process will also represent an important tool for auditing the current three-year strategy.

Each Action identified in the Action Plan is updated by the identified lead on a meeting by meeting basis. On the conclusion of the

Action, the evaluation process is completed whereby highlighting strengths, weaknesses and areas of good practice.

10. CHALLENGES AHEAD

10.1 The South Derbyshire Crime and Disorder Partnership have faced the challenges of Year One of the new Strategy with pride and confidence.

The main challenges the Partnership face in the remaining two years of the Strategy include:

- ⇒ To work constantly towards the Public Service Agreement targets.
- ⇒ To further develop the intervention led by the Probation Service for persistent offenders.
- ⇒ To identify initiatives to reduce the fear of crime.
- ⇒ To further develop the use of crime analysis whereby providing a more effective use of resources to reduce crime.
- ⇒ To implement, monitor and evaluate the Year Two Action Plan.
- ⇒ To work in partnership with the District and County Council to deliver a cross cutting Best Value Review of Community Safety and to link into the District's Comprehensive Performance Assessment (CPA).
- ⇒ To review and support Neighbourhood Watch in South Derbyshire.
- ⇒ To confirm the mainstreaming of the Community Drugs Officer post.
- ⇒ To improve public relations and promotional support for the Partnership.

11. THE WIDER PICTURE

11.1 The Partnership continues to work alongside the Government Office for the East Midlands (GOEM). South Derbyshire now has new GOEM representative in Michaela Antoine.

11.2 The Partnership is also establishing cross border working with East Staffordshire and North West Leicestershire.

12. CONCLUSION

9.1 The South Derbyshire Crime and Disorder Partnership has challenges for the remaining two years of the Strategy, but if these are faced with the same degree of motivation and level of partnership working we *will* be successful.

The Partnership now has:

- Sound foundations
- Clear direction in Action Plans
- Effective monitoring and evaluation procedures
- A structure Partnership Development Plan
- An effective process for self assessment
- Clear lines of communication
- A dedicated and expanding support team
- An increasing budget to assist in delivering the strategy
- Motivated partnership working

The Partnership will continue to build on its success and looks forward with enthusiasm to delivering the challenges in the remaining two years of the 2002 / 2005 Strategy.

Michelle L Collins
Community Safety Officer

Appendix 1

**SOUTH DERBYSHIRE CRIME AND DISORDER PARTNERSHIP
2002/2003 ESTIMATED OUTTURN**

Expenditure		Income	
Salaries (inc related costs)			
Police Liaison Officer	40,900	Home Office	
Community Safety Officer	26,930	Safer Communities Fund	24,360
Community Drugs Officer	22,620	Operation Jupiter	25,000
Administrative Assistant	8,830	Partnership Development Fund	14,500
Analyst Support	25,000	Communities Against Drugs	95,020
Wages	500		
Travel	760	Police	
Training	460	Police Liaison Officer	40,900
Equipment	2,235	PSA	5,500
Telephones	215	Contribution	12,000
Subsistence	280	Youth Project	500
Printing	920	QDOS	800
Consultant Fees	1,760	Drugs Education	4,000
Contributions	1,300	Security Marking Kits	2,000
Promotional/Campaigns	7,000		
BURGLARY			
Burglary Reduction Project	114,500	SDDC	
ANTI SOCIAL BEHAVIOUR			
Woodville Recreation Ground	34,430	Contribution	11,000
Neigh'hood Risk Assessments	11,350	PSA	14,500
Parks Risk Assessments	3,000	Parks Assessments	3,000
QDOS - Antisocial Behaviour	3,010	Linton Youth Facility	4,600
Linton Youth Facilities	10,000	Burglary Reduction	50,000
Willington Youth Shelter	5,000	DCC	
Summer Splash/Playscheme	2,000	2001/02 Projects	9,000
DOMESTIC ABUSE			
Big Boy Don't Cry	1,000	Healthy Schools Project	5,000
COMMUNITY ENGAGEMENT			
Local Crime Reduction Groups	9,000	CCTV	37,000
SUBSTANCE MISUSE			
Schools Drugs Education	4,000	Burglary Reduction	20,000
Healthy Schools Project	5,000	Audit/Strategy Recharge (2001/02)	4,700
CAD - Community	1,000	PSA	6,930
- Persistent Offenders	8,000	QDOS	2,000
- Mobile Youth Project	25,000	Security Marking Kits	2,000
- Police Operation	9,000		
- Addaction	12,000	SRB Woodville Projects	37,600
- CVS Consultation	4,000	National Forest-Linton Youth Fac'	1,320
- SPODA	10,900	Railtrack - Willington	5,000
AUTO CRIME			
CCTV	40,000	Woodville Parish Council	6,000
C/F	1,260	B/F 2001/02	8,930
	453,160		453,160

SOUTH DERBYSHIRE COMMUNITIES AGAINST DRUGS PROGRAMME
2001 – 2003

The Communities Against Drugs (CAD) programme is part of the Communities aim of the Government's 10 year anti-drugs strategy which deals with the effect of drugs on communities including crime, social exclusion, neighbourhood decline and drug supply. The three specific delivery objectives of Communities Against Drugs are to:

- Disrupt drugs markets
- Tackle drug related crime
- Strengthen communities to withstand drugs problems

Communities Against Drugs is a 3 year programme and in 2001 it was announced that South Derbyshire was to receive £ 71400 annually for three years, with a minimum of 32% of the annual allocation to be spent on capital items.

In years 1 and 2 of the programme, 8 projects received funding. These projects and progress to date are outlined below:

1. **Mobile Youth Facility** – This project has received a total of £57000 which has contributed to the build and running costs of the facility. The facility is an outreach service providing:
 - advice and information to young people in partnership with services available at the youth information shop
 - drugs and health educational programmes in community settings
 - youth diversory activities to groups of disaffected young people, specifically those identified as being at risk of involvement with drug use and supply.

At the time of writing the facility had made 3149 contacts with young people.

2. **Community Drugs Officer** – In years 1 and 2, this post has received £27550 from CAD. The Community Drugs Officer was recruited in July 2002 and now co-ordinates the Substance Misuse programme for the Crime and Disorder Partnership, which includes projects funded through CAD.

QDOS Theatre Project – This project received £4960 in year 1. Qdos Theatre company held a two residential drugs awareness course for 12 young people at The William Allitt School. Over 100 people attended the performance at the end of the course which focused on the effects of drug use on young people's lives.

3. **Operation Night** – This operation received £17000 over 2 years. Operation Night was a highly successful covert police operation which resulted in 22 arrests. Approximately 90 charges were laid, 88 for drugs offences and 2 for theft. At the time of writing 13 people had been sentenced to a combined total of 37½ years imprisonment. 1 person is awaiting sentence. Since Operation Night, all drug related crime has fallen in Newhall. For example on Beat 623, domestic burglaries fell from 106 in 2001 to 70 in 2002.
4. **Community Consultation** – £4000 of CAD funding was allocated for this consultation process which was undertaken by South Derbyshire CVS. The consultation took place in two stages; the first stage taking place between February and April 2002, and the second stage during the same period in 2003. It is hoped that a comparative analysis of the two stages will provide valuable feedback on community perceptions of a range of crime prevention initiatives which took place in the intervening time. In the first stage, 153 local residents were consulted on their views of domestic burglary and drugs and the perceived impact of drugs on their lives. The report included a 17 point recommended action list, and 13 of these of these actions resulted in remedial action being taken.
5. **SPODA Support Service** – Following recommendations from the Community Consultation and the Substance Misuse Action Team, £10900 was allocated from year 2 CAD funding for the development of a support service for the parents and carers of drug users. A dedicated part time support worker was recruited for South Derbyshire in October 2002. Since October, a client base has been established and fortnightly self-help meetings are being held in Newhall.
6. **Persistent Offenders Project** - £8000 was allocated from year 2 CAD funding to support this countywide project. The project aims to provide intensive monitoring and supervision of the most prolific offenders in each community. The project has been developed following a successful pilot run in Derby city where significant reductions in re-offending rates have been achieved (50% compared with a national average of 80%). The scheme prioritises offenders committing domestic burglary and those known to have a drug addiction. To date, 8 adults and 2 juveniles have been referred to the South Derbyshire scheme.

Addaction Development Scheme – This project received £12000 from the year 2 capital allocation. The project was to enable the development of the key local drug treatment service, Addaction, to increase access to the service, reduce waiting times and increase the variety of services available. It is envisaged that the relocation and development of the service will take place in June 2003 following a successful application to GOEM to carry over the funds into 2003.

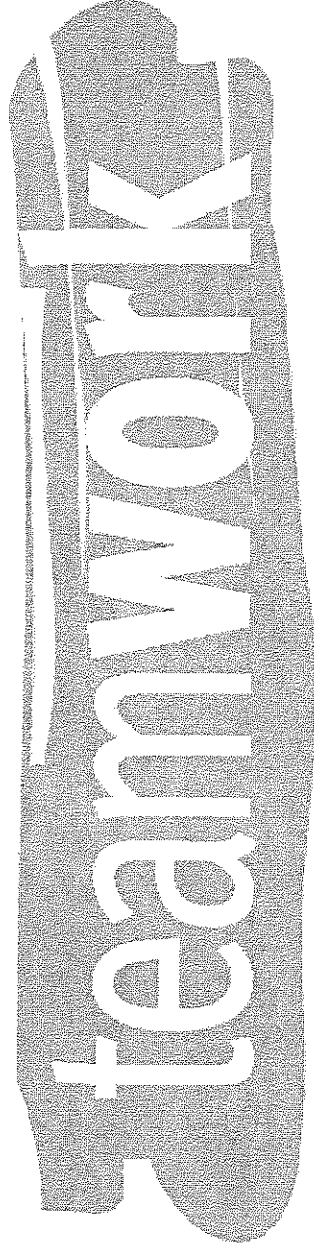
Action Team Update

Action Team	Summary
<p>Domestic Burglary</p>	<p>➤ Burglary Reduction Project started. £110 000 of funding secured. Project has four aspects:</p> <ol style="list-style-type: none"> 1. Alarms installed in victims homes 2. Security measures in homes of vulnerable people 3. Security measures around sheltered housing complexes 4. Security marking kits and alarms to all households <p>➤ Funding being allocated to assist the persistent offenders project</p> <p>➤ Community Drugs Officer researching the availability of current drug referral and treatment services in South Derbyshire. Revised procedures for referral now in place.</p> <p>➤ County Wide 'Foot in the Door' campaign – South Derbyshire event held on 21 November 2002.</p> <p>➤ Neighbourhood Watch support group re-launched. Each co-ordinator receiving a Security marking Kit.</p> <p>➤ Property Marking packs being sent to every household in South Derbyshire, includes voucher for free mini alarm and car window etching.</p>
<p>Anti-social Behaviour</p>	<p>➤ Linton Youth Facilities project underway - awaiting confirmation of delivery and installation of play equipment.</p> <p>➤ Schools Safety Day planned for 19 June 2003</p> <p>➤ Sub group meeting to complete feasibility of Neighbourhood Warden Scheme</p> <p>➤ Sub group meeting to consider establishment of Mediation Service</p> <p>➤ Sub group set up to address Motorcycling issues</p> <p>➤ Feasibility review to form Anti-social Behaviour Team</p> <p>➤ QDOS Anti Social Behaviour Drama project delivered to John Port and William Allitt schools.</p> <p>➤ Additional Street lighting installed to path leading to Woodville Recreation Ground</p>

Substance Misuse	<ul style="list-style-type: none"> ➤ Operation Night completed and follow up work underway using intelligence gathered. ➤ Community consultation in Newhall (stage one) completed and report produced. ➤ Youth Service mobile outreach facility delivering programme. ➤ SPODA support worker employed and publicising service. ➤ Persistent Offenders scheme progressing – caseload being developed. ➤ Newhall and Midway Local Crime Reduction Group launched - Action Plan being developed. ➤ Addaction relocation project has hit problems. New premises may be needed.
Autocrime	<ul style="list-style-type: none"> ➤ Developing a multi-agency cross border crime prevention seminar for car park operators ➤ Beat constables have produced hot spot analysis of their areas which will be overlaid with other perceptions of levels of crime ➤ CCTV – £38,000 gained to joint fund 5 locations including: Greenbank Leisure Centre/Civic, Rosliston Forestry Centre, Welcome Break Service Centre, Little Chef (Willington) ➤ Successful Pre Christmas campaign aimed at supermarkets and car parks ➤ Development of 'Rat Trap' vehicle initiative. ➤ Auto Windscreens to provide free car window etching for residents in South Derbyshire.
Violent Crime	<ul style="list-style-type: none"> ➤ Successful test-purchasing pilot held in urban core of Swadlincote - Trading Standards and the Police awaiting prosecution information. ➤ Successful anti-racism campaign held in local schools, awaiting evaluation of project. ➤ Ongoing Pub Watch initiatives proving to be successful throughout South Derbyshire - Pub Watch packs to be piloted in Melbourne. ➤ Membership link established with the Domestic Violence Action Team. ➤ Sub group set to up to address racial harassment problems ➤ Sub group to be set up to address Licensing problems
Community Engagement	<ul style="list-style-type: none"> ➤ The Action Team has been established and is working on a range of actions including: ➤ Annual programme of crime prevention campaigns ➤ Work is underway to develop a Partnership website.
Domestic Violence	<ul style="list-style-type: none"> ➤ Domestic Abuse Awareness Conference held June 2002. ➤ Funding secured for capital build of Safe House. ➤ New full time post at CVS to work with children and families experiencing domestic abuse. ➤ Delivering a theatre project in schools (<u>Big Boys don't Cry</u>) to address domestic abuse.

Annexe No. 3
South Derbyshire Crime and Disorder Partnership

Year Two Action Plan 2003 – 2004



Reducing Crime in our Community

South Derbyshire Crime and Disorder Partnership

VISION

“To work together to provide the people of South Derbyshire with a Community, in which it is safe to live, work, play and visit.”

This vision for a safe South Derbyshire will be achieved through partnership working between the range of local authorities, police, health, other statutory bodies, voluntary sector organisations and the business sector. The community will also be encouraged to take action itself to reduce criminal and anti-social behaviour.

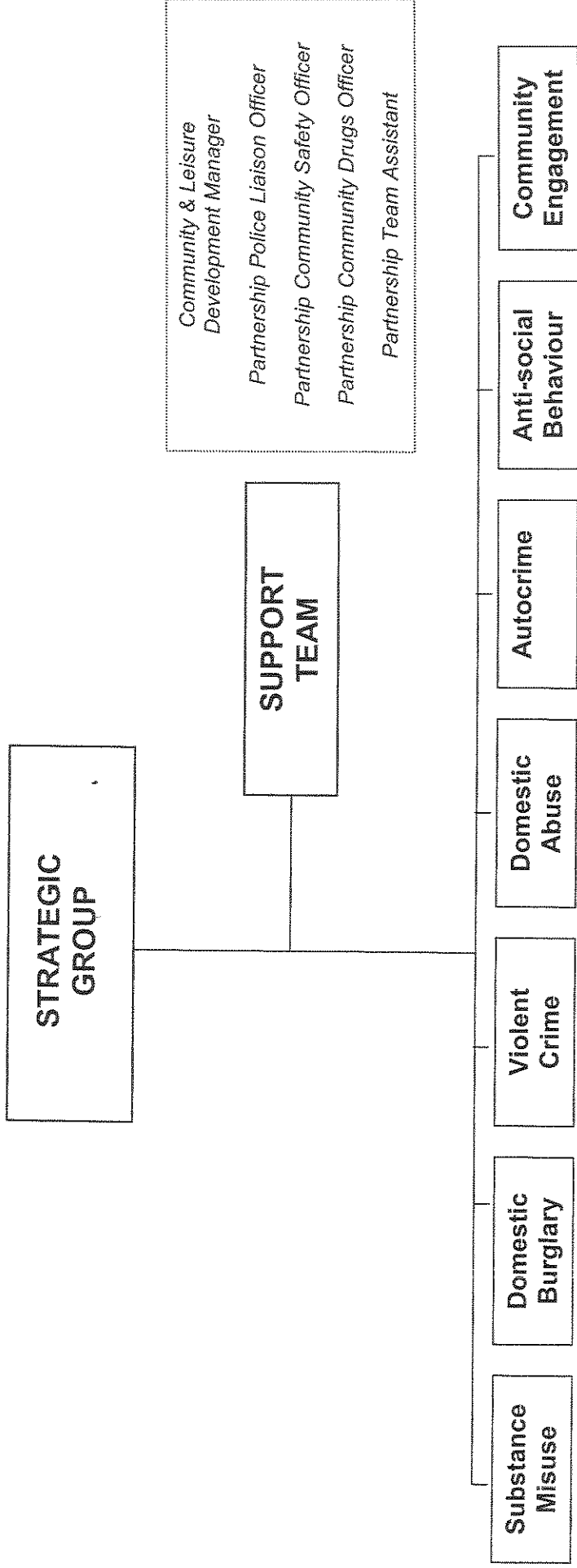
INTRODUCTION

The Crime and Disorder Act (1998) places a statutory responsibility on Derbyshire Constabulary, Derbyshire County Council and South Derbyshire District Council to work in partnership to reduce crime and disorder through the production of a crime reduction strategy every three years.

To develop that strategy an audit of crime and disorder using both recorded crime figures and the results from a number of public surveys, identified what priorities should be addressed by the Partnership. The 2002 – 2005 South Derbyshire Crime and Disorder Strategy provides the overarching policy and this document represents the second year of the action plan to deliver the crime reduction work.

DELIVERING THE ACTION PLAN

The South Derbyshire Crime and Disorder Partnership is structured as shown in the diagram below: -



Please note: Sub Groups are formed (where necessary) to address particular problems / projects. Each Sub Group Leader reports progress to Action Team meetings on a regular basis.

Strategic Group

This group consists of the responsible authorities, Police, District and County Council and other statutory agencies such as Probation Service, Drug and Alcohol Action Team, and Health and also non-statutory agencies from the private, public and voluntary sectors.

The group is responsible for the implementation of the Strategy, its resourcing and its performance. Other issues this group is responsible for include information exchange, persistent young offenders and crime mapping analysis.

The Chairperson of each Action Team is also represented on this group to facilitate effective communication throughout the Partnership and to ensure that the group is accountable for its performance. The Strategic Group member is also accountable for the Action Team's performance.

Action Teams

Each of the seven action teams is responsible for a key issue and produces an annual action plan designed to deliver key targets. In addition, Sub Groups can be formed to address particular problems and projects. The Lead Officer for the Sub Group reports progress at Action Team meetings.

Partnership Support Team

The team consists of those Officers who work directly for the Partnership and take responsibility for specific areas of the Partnership's work.

COMMUNICATION

Communication, both internal within the Partnership and externally with the community and other voluntary, public and private sector organisations, is crucial to the Partnership's success in crime reduction.

In terms of internal communication the Partnership Support Team is responsible for ensuring that information is passed throughout the Partnership with particular importance being placed on the following: -

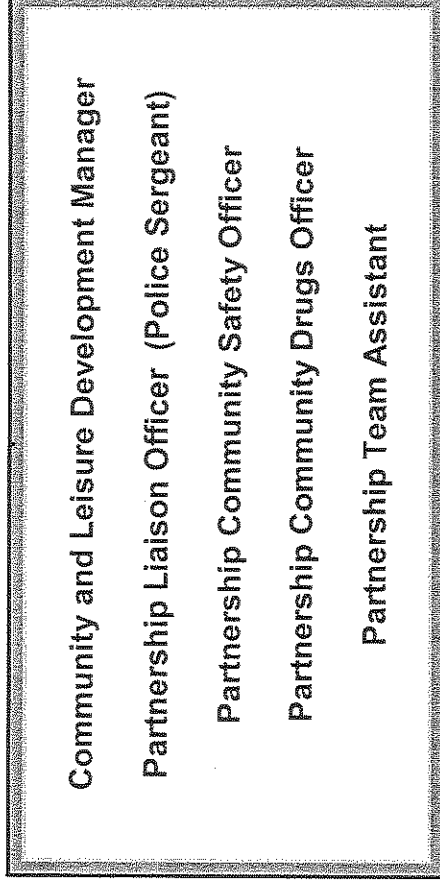
Providing information to Action Teams and Community Police Officers to assist in crime reduction initiatives. Community Police Officers to provide regular feedback to Action Team and Partnership Support Team to measure effectiveness of Action Plans and new trends of crime and disorder. Community Engagement Action Team provide all other levels of the Partnership with regular updates on consultation, press coverage and crime prevention campaigns:

External communication will be the priority the "Community Engagement Action Team" who will have responsibility for the following: -

- Implementing and monitoring the Partnership's Promotional Plan.
- Undertaking on an annual basis a community consultation exercise to allow comparison with the British Crime Survey.
- Review the reporting of crime and disorder information to groups, meetings, committees, councils etc.

RESOURCES

To achieve the targeted reduction in crime will require the enthusiastic and committed support of both the members of the South Derbyshire Crime and Disorder Partnership and the South Derbyshire community. The Partnership's structure illustrated earlier is designed to ensure that this support will be harnessed and developed. The Partnership Support Team consists of four officers and dedicated administrative support.



This Partnership is funded by the Police, County Council, District Council and Home Office who have allocated significant resources with over £450,000 being available for crime reduction work in South Derbyshire during 2003/04.