

# ***Safer South Derbyshire Partnership***

## ***Year 1 Action Plan 2005 – 2006***

**teamwork**

*Keeping our Community Safe*

Safer South Derbyshire Partnership

## VISION

*"To work together to provide the people of South Derbyshire with a community, in which it is safe to live, work, play and visit."*

This vision for a safe South Derbyshire will be achieved through partnership working between the range of local authorities, police, health, fire and rescue, other statutory bodies, voluntary sector organisations and the business sector. The Community will also be encouraged to take action itself to reduce criminal and anti-social behaviour.

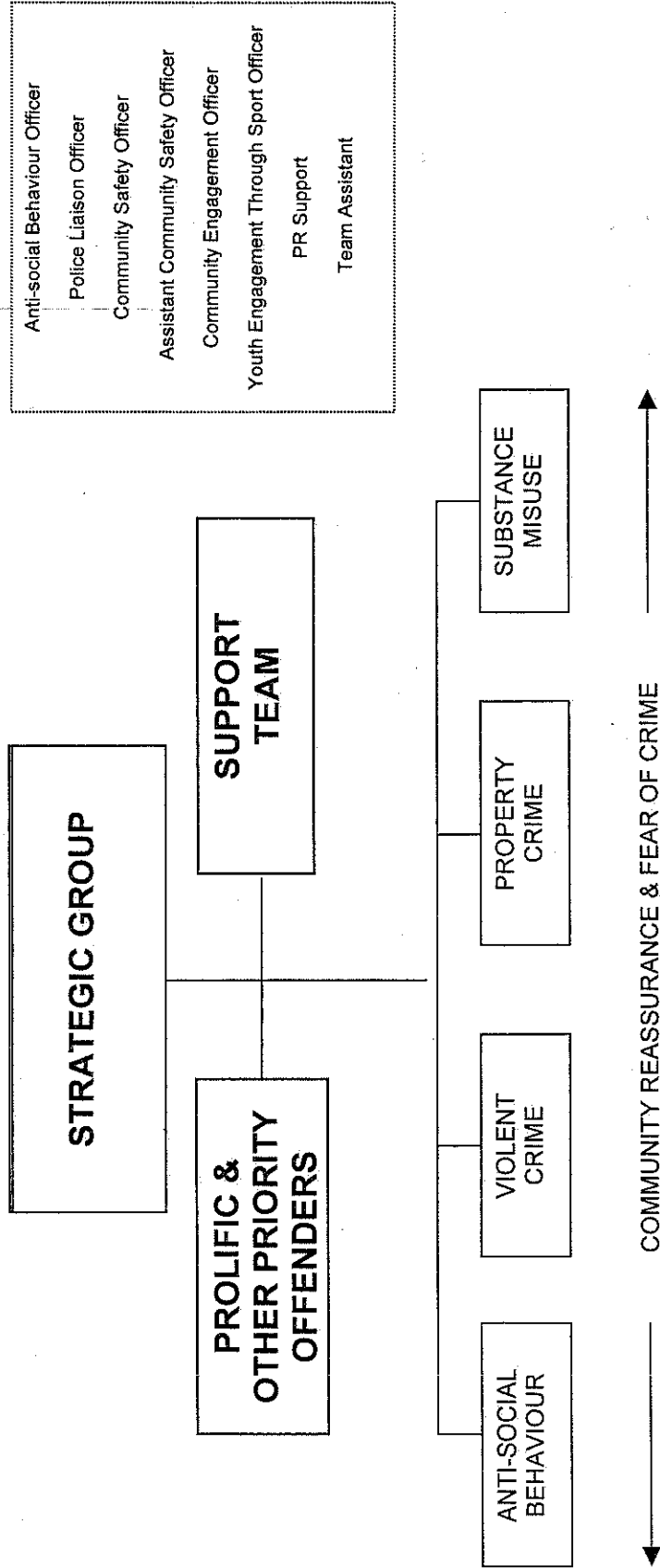
## INTRODUCTION

The Crime and Disorder Act (1998) places a statutory responsibility on Derbyshire Police, Derbyshire County Council, Derbyshire Police Authority, Derbyshire Dales and South Derbyshire Primary Care Trust (PCT), Derbyshire Fire and Rescue Service and South Derbyshire District Council to work in partnership to reduce crime and disorder through the production of a crime reduction strategy every three years.

To develop that strategy, an audit of crime and disorder using both recorded crime figures and the results from a number of public surveys, identified what priorities should be addressed by the Partnership. The 2005 – 2008 South Derbyshire Crime and Disorder Strategy provides the overarching policy and this document represents the first year of the action plan to deliver the crime reduction work.

**DELIVERING THE ACTION PLAN**

The Safer South Derbyshire Partnership is structured as shown in the diagram below: -



The 'Community Reassurance & Fear of Crime' priority will be tackled by all action teams with relevant actions being delivered by each.

**Please note:** Sub Groups are formed (where necessary) to address particular problems / projects. Each Sub Group Leader reports progress to Action Team meetings on a regular basis.

## **Strategic Group**

This Group consists of the responsible authorities, Police, Fire Service, District and County Council and other statutory agencies such as Probation Service, Drug and Alcohol Action Team and Health and also non-statutory agencies such as South Derbyshire CVS and others from private, public and voluntary sectors.

The Strategic Group is responsible for the implementation of the Strategy, its resourcing and its performance. Other issues this Group is responsible for include information exchange, persistent and priority offenders and crime mapping analysis.

The Chairperson of each Action Team/Panel is also represented on this Group to facilitate effective communication throughout the Partnership and to ensure that the group is accountable for its performance. The Strategic Group member is also accountable for the Action Team/Panels performance.

## **Action Team/Panels**

Each of the four action team/panels is responsible for a key issue and produces an annual action plan designed to deliver key targets. In addition, Sub Groups can be formed to address particular problems and projects. The Lead Officer for the Sub Group reports progress at Action Team meetings.

## **Partnership Support Team**

The team consists of those Officers who work directly for the Partnership and take responsibility for specific areas of the Partnership's work.

## **COMMUNICATION**

Communication, both internal within the Partnership and externally with the community and other voluntary, public and private sector organisations, is crucial to the Partnership's success in crime reduction.

In terms of internal communication the Partnership Support Team is responsible for ensuring that information is passed throughout the Partnership. Particular importance will be placed on the provision of information to the Action Teams and Community Police Officers to assist in crime reduction initiatives. It will also provide all other levels of the Partnership with regular updates on consultation, press coverage and crime prevention campaigns.

External communication will include:

- Implementing and monitoring the Partnership's Communication Strategy

- Implementing and monitoring the Partnership's Promotional Plan
- Undertaking an annual basis community consultation exercise to allow comparison with the British Crime Survey
- The reporting of crime and disorder information to groups, meetings, committees, councils etc.

## **RESOURCES**

To achieve the targeted reduction in crime and disorder will require the enthusiastic and committed support of both the members of the Safer South Derbyshire Partnership and the South Derbyshire community. The Partnership's structure illustrated earlier is designed to ensure that this support will be harnessed and developed. The Partnership Support Team consists of six officers and dedicated administrative PR support.



This Partnership is funded by the Police, County Council, District Council, PCT and Home Office who have allocated significant resources with over £500,000 being available for crime reduction work in South Derbyshire during 2005/06.

## **MONITORING AND EVALUATION**

It is imperative that robust mechanisms are in place to monitor the progress of the identified objectives and targets set out in the Strategy. By regular monitoring and evaluation the Partnership will be able to adjust and amend targets as necessary. A starting point for an effective monitoring and evaluation system will be:

- Individual Action Team/Panels to take ownership of the objectives to drive the targets forward.
- The Crime and Disorder Strategy will work alongside the plans of Statutory Partners e.g. Community Plan and Youth Justice Plans.
- Annual Self-Assessment process to identify strengths, weaknesses and areas for general improvement.

## **THE PROCESS**

### **Action Team/Panels**

The Action Plans will be evaluated at each meeting and progress on identified targets and objectives documented.

### **Strategic Group**

The Chair of the Action Team/Panel will update the Strategic Group on a regular basis. This Group will ensure that issues such as funding and membership of the Partnership are addressed. The Strategic Group will also ensure that the Partnership as a whole is working towards targets from a local regional and national perspective.

## **THE WAY FORWARD**

- Detailed monitoring and evaluation arrangements will be published annually.
- Annual reports will be published on the progress of the Partnership.
- Independent monitoring and evaluation will take place for specific projects undertaken.
- Partnership Development Plan to enable the Partnership to achieve its objectives and targets.
- Annual Self-Assessments to meet the criteria required by the Home Office for Crime and Disorder Partnerships.
- A Citizens Panel survey will be carried out on a yearly basis to ensure the Partnership is continually working alongside the community.

## ACTION PLAN TARGETS FOR 2005 – 2006

The following crime/disorder figures and perceptions of crime have been taken from Derbyshire Police records and the South Derbyshire Citizens Panel Survey.

**Anti-social Behaviour** - Strategic target to reduce criminal damage incidents by 16% from 1140 to 960 by 2007/08

	2003/04 Benchmark	2004/05	2005/06	2006/07	2007/08 (Target-16%)
Total Number of Crimes	1140	1095	1050	1005	960

**Anti-social Behaviour** - Strategic target to reduce deliberate secondary fires by 5% from 217 to 206 by 2007/08

	2003/04 Benchmark	2004/05	2005/06	2006/07	2007/08 (Target-5%)
Total Number of Crimes	217	214	211	208	206

**Anti-social Behaviour** - Strategic target to reduce extent to which residents think anti-social behaviour occurs in their neighbourhood by 10% by 2007/08

	2004/05 Benchmark	2005/06	2006/07	2007/08 (Target-10%)
Score Index from Citizens Panel	4976	4810	4644	4478

*NB. The answers to certain Citizens Panel questions are weighted and a calculation made on the response rate per 1000 respondents. This gives an index score, which needs to be reduced.*





**Anti-social Behaviour** - Strategic target to reduce police calls for service by 5% from 4293 to 4078 by 2007/08

	2004/05	2005/06	2006/07	2007/08 (Target-5%)
<b>Total Number of Calls for Service</b>	4293	4221	4149	4078

**Fear of Crime & Community Reassurance**- Strategic Target to reduce the number of South Derbyshire residents feeling a bit or very unsafe when alone in their home at night from 11% to 8% by 2007/08

	2004/05	2005/06	2006/07	2007/08
<b>Citizens Panel Results</b>	11%	10%	9%	8%

**Fear of Crime & Community Reassurance**- Strategic Target to reduce the number of South Derbyshire residents feeling a bit or very unsafe when traveling alone on public transport from 33% to 25% by 2007/08

	2004/05	2005/06	2006/07	2007/08
<b>Citizens Panel Results</b>	33%	30%	27%	25%

**Violent Crime** - Strategic Target to reduce violent crime by 10% from 952 to 857 by 2007/08

Total Number of Crimes	2003/04 Benchmark	2004/05	2005/06	2006/07	2007/08 (Target-10%)
	952	928	904	880	857

**Domestic Burglary** - Strategic Target to reduce house burglaries by 30% from 372 to 260 by 2007/08

Total Number of Crimes	2003/04 Benchmark	2004/05	2005/06	2006/07	2007/08 (Target-30%)
	372	344	316	288	260

**Auto Crime** - Strategic Target to reduce theft of motor vehicles by 10% from 234 to 211 by 2007/08

Total Number of Crimes	2003/04 Benchmark	2004/05	2005/06	2006/07	2007/08 (Target-10%)
	234	228	222	216	211

**Auto Crime - Strategic Target to reduce theft from motor vehicles by 20% from 597 to 478 by 2007/08**

	2003/04 Benchmark	2004/05	2005/06	2006/07	2007/08 (Target-20%)
<b>Total Number of Crimes</b>	597	567	537	507	478

**Substance Misuse - Strategic Target to reduce violent crime by 10% from 952 to 857 by 2007/08**

	2003/04 Benchmark	2004/05	2005/06	2006/07	2007/08 (Target-10%)
<b>Total Number of Crimes</b>	952	928	904	880	857

**Substance Misuse - Strategic Target to reduce disturbances in licensed premises by 25% from 21 to 16 by 2007/08**

	2003/04 Benchmark	2004/05	2005/06	2006/07	2007/08 (Target-25%)
<b>Total Number of Crimes</b>	21	19	18	17	16

**Substance Misuse - Strategic Target to reduce drugs offences by 15% from 64 to 54 by 2007/08**

	2003/04 Benchmark	2004/05	2005/06	2006/07	2007/08 (Target-15%)
<b>Total Number of Crimes</b>	64	61	58	56	54

YEAR 1 – 2005/06

**Anti-social Behaviour Panel**

Strategic Group Member and Chair	Mark Alfliat	South Derbyshire District Council
Elected Councillor	Stephen Taylor	South Derbyshire District Council
Support Team Officer	Sue Haslett	Partnership Support Team
Team Members	Ian Duckmanton	Partnership Support Team
	Karen Talbot	Partnership Support Team
	Phil Marriott	Partnership Support Team
	Sue Grief	Partnership Support Team
	PC Dee Hornblower	Swadlincote Police
	Jamie Walker	Derbyshire Fire Service and Rescue
	Stuart Batchelor	South Derbyshire District Council
	Lesley Reece	Derbyshire County Council
		Performance Management
		Youth Engagement
		Enforcement
		Community Engagement
		Fear of Crime
		Education Liaison
		Fire Prevention
		Environmental Issues
		Community Safety

## Anti-social Behaviour Action Plan

- \* Community reassurance & fear of crime related action

No	ACTION	LEAD	TARGET	TIMESCALE	Status
<p><b>Objectives:</b></p> <ul style="list-style-type: none"> <li>• To reduce criminal damage by 16% by 2007/08.</li> <li>• To reduce secondary fires by 5% by 2007/08.</li> <li>• To reduce the extent to which residents think anti-social behaviour by 10% by 2007/08</li> <li>• To reduce Police calls for service by 10% by 2007/08</li> <li>• To reduce the number of South Derbyshire residents feeling a bit or very unsafe when alone in their home at night to 8% by 2007/08</li> <li>• To reduce those South Derbyshire residents feeling a bit or very unsafe when traveling alone on public transport to 25% by 2007/08</li> </ul> <p><b>Performance Indicators:</b></p> <ul style="list-style-type: none"> <li>• Incidents of criminal damage</li> <li>• Incidents of secondary fires</li> <li>• Police calls for service</li> <li>• Citizens Panel</li> <li>• British Crime Survey</li> </ul>					
<p><b>Next Review Date:</b> Review annually, next review 2006</p>					
<p>The Anti-social Behaviour Action Plan has 4 areas of work:</p> <ol style="list-style-type: none"> <li>1. Information &amp; Data Sharing</li> <li>2. Prevention and Education</li> <li>3. Enforcement</li> <li>4. Working in and with communities</li> </ol>					
<p><b>1. Information &amp; Data Sharing</b></p>					
1.1	To establish an incident management system.	Sue Haslett Partnership Support Team	System in place	August 2005	
1.2	To produce an information pack for complainants outlining the services available.	Sue Haslett Partnership Support Team	Pack produced	April 2006	

<b>1.3</b>	To carry out a feasibility study into establishing a reporting hotline	Sue Haslett Partnership Support Team	Study completed	September 2005	
			Recommendations implemented	March 2006	
<b>2.</b>	<b>Prevention &amp; Education</b>				
<b>2.1</b>	To facilitate & evaluate School Safety Day events in South Derbyshire	Karen Talbot Partnership Support Team	3 events held	June 2005	
<b>2.2</b>	To establish a Public Open Spaces Working Group and address issues identified	Chris Mason SDDC	Evaluation complete Group established	September 2005 April 2005	
<b>2.3</b>	To deliver the youth engagement through sports action plan for 2005/06	Ian Duckmanton Partnership Support Team	Recommendations implemented Action plan delivered	March 2006	
<b>2.4</b>	To provide youth facilities at 2 locations	Ian Duckmanton Partnership Support Team	Facilities in place	March 2006	
<b>2.5</b>	To develop an anti-bullying policy at Pingle School	Dee Hornblower Derbys' Police	Policy in place	September 2005	
<b>2.6</b>	To organise a fireworks awareness campaign in local schools	Paula Fearn Fire & Rescue Service	Campaign held	November 2005	
<b>2.7</b>	To improve communications and engagement in schools across the District	Lesley Reece Derbyshire County Council	System established	March 2006	
<b>2.8</b>	To promote the mediation scheme to partner agencies and community	Sue Haslett Partnership Support Team	Scheme promoted	March 2006	

2.9	To determine action to reduce secondary fires	Jamie Walker Derbyshire Fire & Rescue Service	Project determined Project delivered	July 2005 March 2006
<b>3. Enforcement</b>				
3.1	To complete a review of Police & council traveller liaison policies	Jack Twomey SDDC	Review completed	December 2005
3.2	To use all appropriate tools and legislation to tackle anti-social behaviour	Sue Haslett Partnership Support Team	System in place to ensure up-to-date knowledge	March 2006
<b>4. Working in &amp; with Communities</b>				
4.1 *	To review the structure and roles of Local Crime Reduction Groups	Phil Marriott Partnership Support Team	Review completed Recommendations implemented	July 2005 September 2005
4.2 *	To increase the uniformed presence in South Derbyshire	Sue Haslett Partnership Support Team	Scheme in place	October 2005
4.3 *	To improve the safety and appearance of neighbourhoods	Stuart Batchelor SDDC	Complete Risk Assessments and commission works in 5 locations	March 2006
4.4 *	To revise the communications strategy	Sue Haslett Partnership Support Team	Strategy revised	October 2005
4.5 *	To assist in establishment of 2 police houses	Stuart Batchelor SDDC	2 new police houses operational	March 2006

YEAR 1 – 2005/06

**Violent Crime (Domestic Abuse) Panel**

Strategic Group Member and Chair	Chief Superintendent Tony Hurrell	Derbyshire Police
Elected Councillor	Kath Lauro	Derbyshire County Council
Support Team Officer	Karen Talbot	Partnership Support Team
Team Members	Min Clarkson	South Derbyshire District Council (Housing)
	Paul Saunders	Education
	Beverley Wagstaffe	South Derbyshire District Council (Housing)
	Dawn Robinson	South Derbyshire CVS
	Andrew Hambleton	Social Services
	Francis Critchley	PCT
	Karen Jones	Trident Housing
	Kevin Matchett	Social Services
	Sgt Ian Mallard	Police Family Unit
	Michael Dosanjh	Probation Service
	PC Eileen Banton	Swadlincote Police
	Jacqui Howell	South Derbyshire CVS



**Violent Crime (Domestic Abuse) Action Plan**

- \* Community reassurance & fear of crime related action

Please note that actions are also included within the Substance Misuse plan to reduce violent crime. These are indicated with the following ▲

<b>Objectives:</b>		<b>Performance Indicators:</b>			
<ul style="list-style-type: none"> <li>• To raise awareness of the nature and extent of domestic abuse</li> <li>• To improve service provision in South Derbyshire</li> <li>• To reduce violent crime by 10% by 2007/08</li> </ul>		<ul style="list-style-type: none"> <li>• BVPs</li> <li>• Police statistics on domestic incidents</li> <li>• Number of calls to support services</li> </ul>			
<b>Next Review Date:</b>					
Review annually, next review 2006					
No	ACTION	LEAD	TARGET	TIMESCALE	Status
	The violent crime action plan has three areas of work: 1. Prevention & education 2. Direct services 3. Communications				
<b>1. Prevention &amp; Education</b>					
1.1	To adopt a pro-active approach to the eviction of perpetrators of domestic abuse.	Min Clarkson SDDC Housing	Procedures in place	March 2006	
1.2	To determine a baseline assessment of services for perpetrators and potential perpetrators of domestic violence	Karen Talbot Partnership Support Team	Report completed	December 2005	

1.3	Local Authority to provide training to frontline staff on Derbyshire Domestic Abuse County Forum's joint protocol	Karen Talbot Partnership Support Team	All district council frontline staff trained	December 2005	
1.4	To raise awareness of domestic abuse in secondary schools within PHSE curriculum	Jacqui Howell CVS	Input at 30 classes in secondary schools	March 2006	
1.5	To raise awareness of domestic abuse with older members of community	Andrew Hambleton DCC	2 health roadshows held	March 2006	
1.6	To establish accredited domestic abuse training to those in voluntary & statutory agencies	Dawn Robinson CVS	Stall at Liberation Day	May 2005	
			Course written & accredited	March 2006	
<b>2. Direct Services</b>					
2.1 *	To provide places in local schools for children at the Safehouse	Lesley Reece DCC	System in place	March 2006	
2.2 *	To provide GP services to service users of Safehouse	Nina Ennis PCT	Services in place	March 2006	
2.3 *	To explore the potential for enhancing the Safer Homes scheme to provide a sanctuary service to enable victims to remain at home safely	Karen Talbot Partnership Support Team	Report completed	October 2005	
			Recommendations implemented	March 2006	

2.4	To produce a comprehensive directory of local services for domestic abuse	Andrew Hambleton DCC	Directory produced	March 2006
2.5	To provide a multi-agency domestic abuse drop-in centre	Ron Lane Next Step	Service launched	June 2005
2.6	To consider the feasibility of appointing a Domestic Abuse Co-ordinator	Karen Talbot Partnership Support Team	Report completed Progress funding bids	December 2005 March 2006
<b>3. Communications</b>				
3.1	To research the effects of domestic abuse on minority groups	Karen Talbot Partnership Support Team	Report completed	February 2006
3.2	To secure advertising space for Next Step on Queen's Hospital maps.	Karen Talbot Partnership Support Team	60,000 maps to be distributed with outpatients appointments and in hospital areas over 3 years from May 2005	May 2005

YEAR 1 – 2005/06

**Property Crime Action Team**

Strategic Group Member and Chair	Inspector Steve Fairbrother	Derbyshire Police
Elected Councillor	Councillor Bob Southern	South Derbyshire District Council
Support Team Officer	Sgt Andy Wright	Partnership Support Team
Team Members	Ruth Kemp	Partnership Support Team
	Sue Grief	Partnership Support Team
	PC Eileen Banton	Swadlincote Police
	DI Debbie Edmunds	Swadlincote Police
	Lesley Reece	DCC
	Marie Billyeald	DCC
Associate Members (attendance as and when required)	Jacqueline Lee-Ferguson	Victim Support
	Dawn Dawson	SDDC Housing
	Jamie Walker	Fire Service
	Mike Sunter	SDDC Environmental

**Property Crime Action Plan**

\* Community reassurance & fear of crime related action

<b>Objective:</b> <ul style="list-style-type: none"> <li>To reduce the number of house burglaries in South Derbyshire by 30% by 2008.</li> <li>To reduce thefts of motor vehicles by 10% by 2008</li> <li>To reduce thefts from motor vehicles by 20% by 2008</li> </ul>		<b>Performance Indicators:</b> <ul style="list-style-type: none"> <li>Police Crime Figures</li> <li>British Crime Survey</li> <li>Fear of Crime local consultation</li> <li>Safer Homes Scheme Figures</li> </ul>			
<b>Next Review Date:</b> Review annually, next review 2006					
No	ACTION	LEAD	TARGET	TIMESCALE	Status
	The Property Crime action plan has three areas of work 1. Offenders 2. Target Hardening 3. Victim Support/Awareness				
<b>1. Offenders</b>					
1.1	To Implement the Prolific and Priority Offender Scheme and target those involved in Property Crime	Sgt Andy Wright Partnership Support Team  Sgt Andy Wright Partnership Support Team	PPO scheme fully operational in South Derbyshire  Reduce re-offending amongst those identified as persistent offenders.	July 2005  March 2006	

<b>2. Target Hardening</b>				
<b>2.1</b> *	To further develop and extend Safer Homes Scheme and Alarm Project	Ruth Kemp Partnership Support Team	100 vulnerable peoples properties secured  50 alarms to be fitted in burgled properties  Evaluate Scheme  Extend duration of service	March 2006  March 2006  July 2005  November 2005
<b>2.2</b>	To further develop liaison between Local and Divisional Crime Reduction officers and Planning in the SDDC	PC Eileen Banton Swadlincote Police	Ensure recommendations on Crime and Disorder issues are taken into account in all Planning Applications  Evaluate impact of Crime Reduction input in the Planning process	March 2006  March 2006
<b>3. Victim Support/ Awareness</b>				
<b>3.1</b> *	To deliver Summer and Winter Auto Crime Reduction Publicity campaigns.	Sue Grief Partnership Support Team	Summer Crime Reduction Campaign  Winter Crime Prevention Campaign	June 2005  November 2005
<b>3.2</b> *	To deliver Spring and Autumn household property crime reduction campaigns	Sue Grief Partnership Support Team	Spring Crime Reduction Campaign  Autumn Crime Reduction Campaign	May 2005  September 2005

3.3 *	Engage with businesses in South Derbyshire and provide support and advice in crime reduction issues	Ian Hinds Derbyshire Police	35 businesses engaged	March 2006	
3.4 *	To ensure victims of crime are given the necessary level of support.	Jacqueline Lee-Ferguson Victim Support	Review current victim support service Links with Victim Support strengthened-number of referrals monitored.	July 2005 March 2006	
3.5 *	To deliver a 60 <sup>th</sup> Anniversary of WW2 Liberation Day	Phil Marriott Partnership Support Team	Event held	May 2005	
3.6 *	To engage & support the development of Neighbourhood Watch schemes	Phil Marriott Partnership Support Team	Best practice promoted Establish two more groups	March 2006 March 2006	

**YEAR 1 – 2005/06**

**Substance Misuse Action Team**

Strategic Group Member and Chair	Nina Ennis	PCT
Elected Councillor	Mike Lauro	South Derbyshire District Council / Probation
Support Team Officer	Ruth Kemp	Partnership Support Team
Team Members	John Stamp	DAAT
	PC Dee Hornblower	Swadlincote Police
	Joy Gutteridge	School Nurse/ Manager
	Heather Walker	Addaction
	Steve Fairbrother	Swadlincote Police
	Balwinder Singh	Breakout
		Performance Management
		Youth Engagement
		Health
		Treatment
		Enforcement
		Treatment



**Substance Misuse Action Plan**

\* Community reassurance & fear of crime related action

<b>Objective:</b> <ul style="list-style-type: none"> <li>To reduce violent crime by 10% by 2007/08</li> <li>To reduce disturbances in licensed premises by 25% by 2007/08</li> <li>To reduce drugs offences by 15% by 2007/08</li> </ul>		<b>Performance Indicators:</b> <ul style="list-style-type: none"> <li>Police statistics</li> <li>Number of calls to support services</li> </ul>			
<b>Next Review Date:</b> Review annually, next review 2006					
No	ACTION	LEAD	TARGET	TIMESCALE	STATUS
	The Substance Misuse Action Plan has three areas of work: <ol style="list-style-type: none"> <li>Mapping and Research</li> <li>Education</li> <li>Enforcement</li> </ol>				
<b>1. Mapping &amp; Research</b>					
1.1	To undertake a mapping exercise of alcohol misuse to identify problematic behaviour and gaps in service provision	Ruth Kemp Partnership Support Team	Research report completed  Action plan of appropriate responses developed	Sept 2005  October 2005	

1.2	Produce analysis of drugs and alcohol related activity in identified geographical areas	Chris Sprange Partnership Analyst	Provision of quarterly hotspot analysis	March 2006	
		John Stamp DAAT	Provision of monthly data	March 2006	
1.3	Undertake research into supported accommodation needs of substance misusers	Ruth Kemp Partnership Support Team	Produce research report including recommendations	Dec 2005	
1.4	To evaluate the effectiveness of support services in South Derbyshire	Ruth Kemp Partnership Support Team	Report produced	May 2005	
			Recommendations implemented	August 2005	
<b>2. Education</b>					
2.1	To ensure the delivery of appropriate substance misuse education in schools	Steve Ford Education Dept	Evaluation completed	October 2005	
			Programme established	March 2006	
2.2	To host presentations to local community groups about substance misuse.	Ruth Kemp Partnership Support Team	5 presentations made	March 2006	
2.3	To produce and distribute a guide to local treatment and support services	Ruth Kemp Partnership Support Team	Guide produced and distributed	April 2005	
2.4	To develop & distribute resource pack to all primary schools providing knowledge concerning drugs and alcohol awareness	Yvonne Wright	Packs distributed	December 2005	

2.5 *	To research the provision of drugs awareness training for licensees and staff	John Stamp DAAT	Research completed	June 2005	
2.6 *	To support and work with offenders to rehabilitate them into the community	Ruth Kemp Partnership Support Team	Recommendations implemented Project delivered	October 2005 March 2006	
<b>3. Enforcement</b>					
3.1 ▲	To work with local licensees to promote responsible drinking and cut down on underage drinking.	Ruth Kemp Partnership Support Team	2 campaigns delivered	Dec 2005	
3.2 ▲	To establish Licensing Department's potential contribution to reduction in violent crime	Carl Jacobs Commercial Standards and Licensing	Involvement agreed	Sept 2005	
3.3 ▲	To carry out test purchasing in identified locations	Trading Standards Derbyshire County Council	Quarterly reports provided	March 2006	

