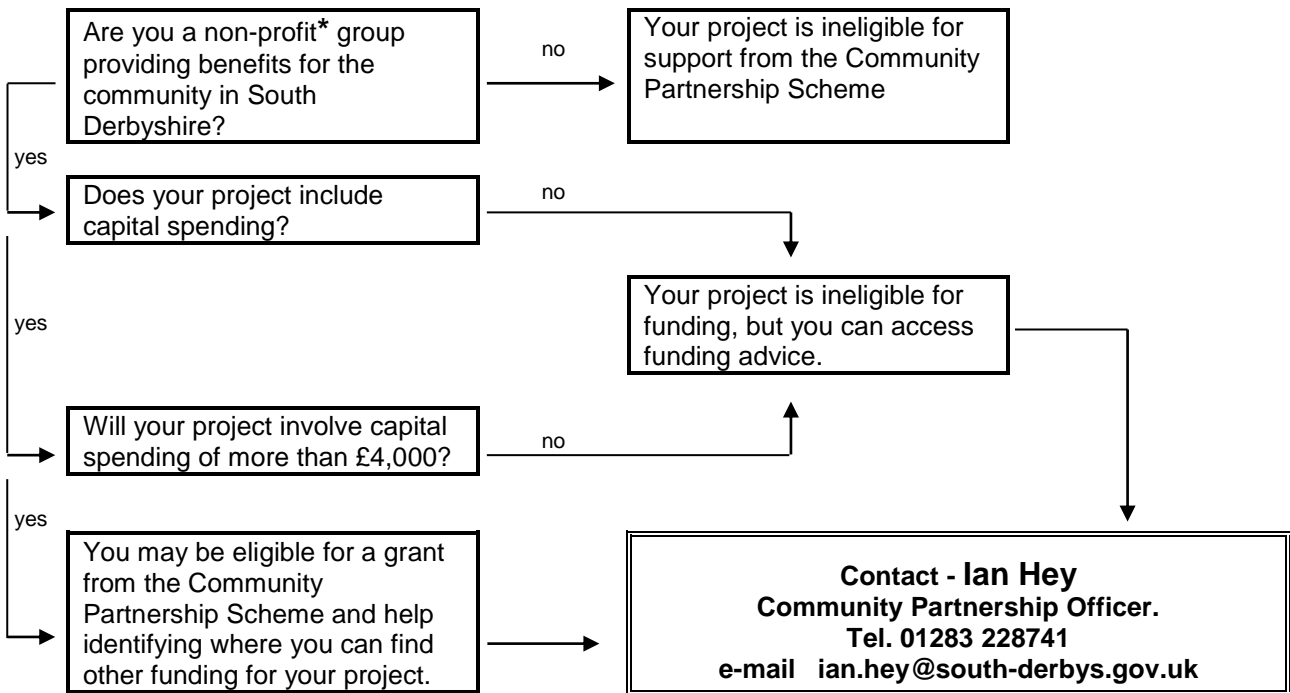
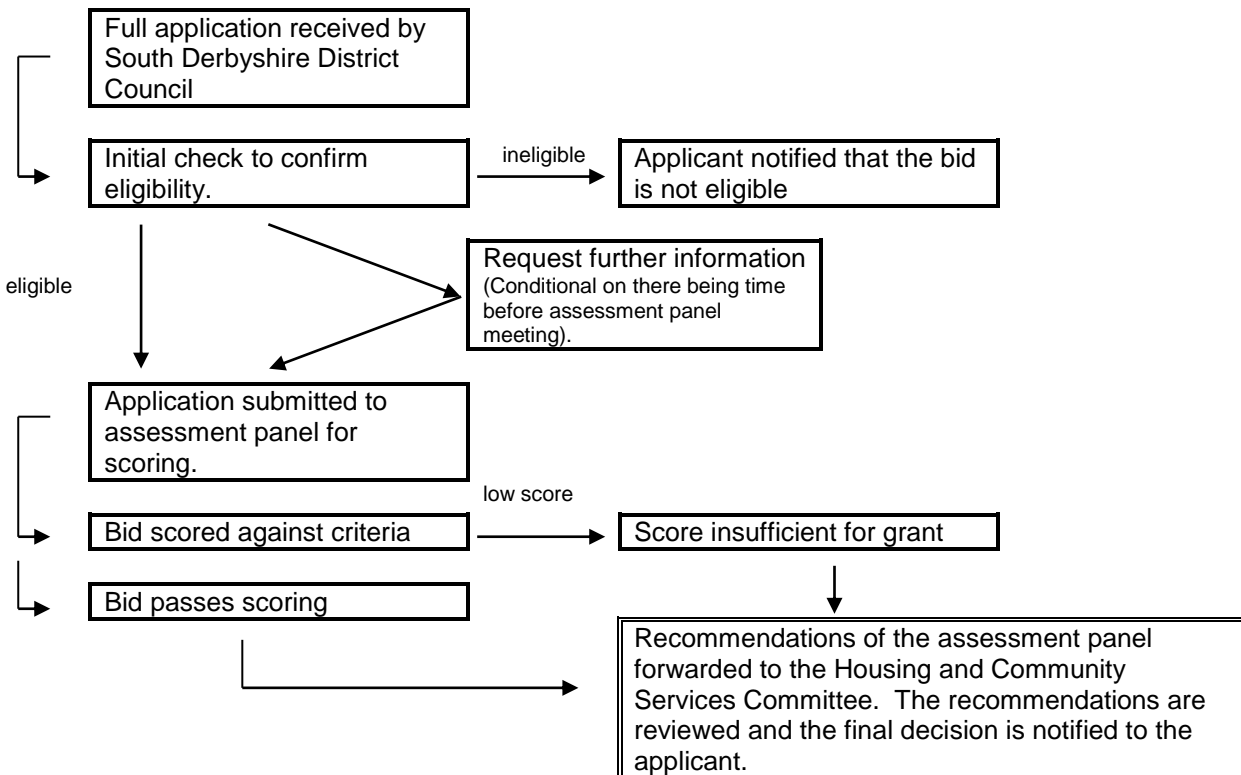


Annexe a

**South Derbyshire District Council
Community Partnership Scheme**



Appraisal Process



*Non-profit in the context of the Community Partnership Scheme refers to charities, constituted community groups (you have a set of agreed rules and procedures) and clubs. In the context of this scheme Parish Councils are

Annexe a

also deemed to be non-profit groups able to apply for projects that are outside of the statutory duties placed upon them.