

**South Derbyshire**  
**Open Space, Sport and Community Facilities Strategy**  
**BRIEFING NOTE**

**Why does South Derbyshire need this Strategy?**

South Derbyshire is the fastest growing District in Derbyshire (and the 9th fastest in England). Between 2014 and 2028, the Office of National Statistics predicts that the population of the South Derbyshire District will increase by an estimated 32.3% (31,000) to 126,690. The population is not only growing, it is ageing, with a predicted 33.5% increase in residents over 55 years by 2021. By 2028 significant numbers of new houses will be required. It is therefore important to assess the sporting and recreational needs of the changing demographic base.

South Derbyshire District Council requires an up to date Open Space, Sport and Community Facilities Strategy to set the ambition and underpinning principles for three Action Plans:

- Built Sports/Community Facilities
- Playing Pitches
- Open Space and Play.

This Strategy and related documents will also inform the production of the Local Plan and the Sport, Physical Activity and Health Strategy. This Strategy will ensure there are sufficient facilities in terms of their:

- Quantity
- Quality
- Spatial distribution.

**What will the Strategy be used for?**

The work will be used to build up a portfolio of Built Facility, Playing Pitch, and Open Space Action Plans for:

- ✓ Informing Planning Policy and the Local Plan
- ✓ Engaging Parish and Town Councils to identify the sport and recreation needs of their areas
- ✓ Influencing community use of school and other education sites (including proposed new developments)
- ✓ Identifying priority projects for funding resulting from housing development
- ✓ Identifying priority projects for pursuing through funding bids (detailed feasibility studies to be undertaken at a later stage)
- ✓ Determining strategic decisions on planning applications (detailed application specific assessment studies will be undertaken at a later stage).

**When will the Strategy be completed?**

Work has commenced on the research stage. It is anticipated that the Framework will be available in **December 2015**.

### How will the Strategy be developed?

The work will build on existing local strategies and studies and will reflect national guidance. VAGA Associates have been commissioned to assist the Council with this work which will consist of a three-stage approach:

- Desktop research (August)
- Consultation (September and October)
- Assessment and Action Planning (October and November).

It will assess supply and demand across the District as a whole and within five Sub-Areas.

**NORTH WEST** (18.6% of population)

Wards: Etwall; Hatton; and Hilton

**NORTH** (14.9% of population)

Wards: Repton; Stenson; and Willington & Findern

**NORTH EAST** (12.4% of population)

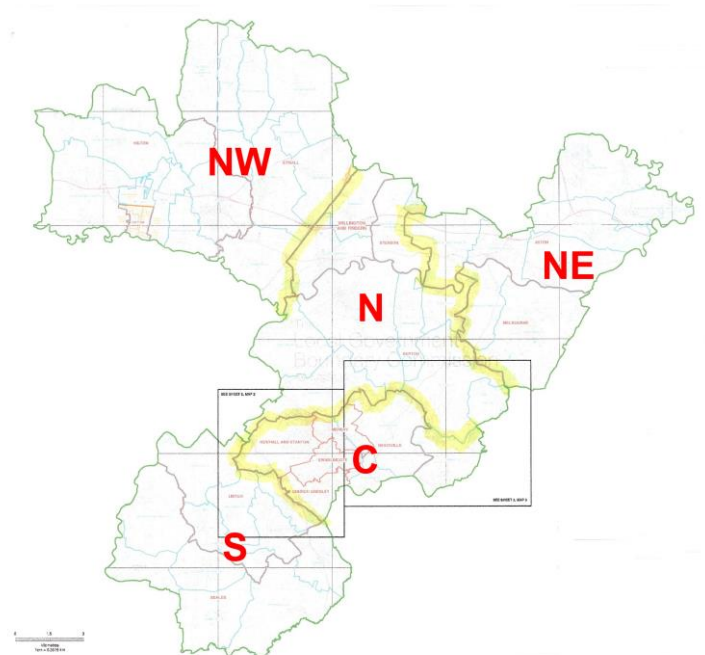
Wards: Aston; and Melbourne

**CENTRAL** (43.3% of population)

Wards: Church Gresley; Midway; Newhall & Stanton; Swadlincote; and Woodville

**SOUTH** (10.8% of population)

Wards: Linton; and Seales



### How can you get involved and who do you contact for further details?

There will be a consultation period during September and October 2015 when there will be:

- An open invite for organisations to give their views
- E-mails/letters sent to local clubs; sports and recreational organisations; Parish Councils and Parish Meetings
- Opportunities for discussions at network meetings taking place during this period and at specially arranged consultation workshops
- Structured interviews with major providers.

If you want to be involved or know more about the Open Space, Sport and Community Facilities Strategy contact Zoë Sewter at South Derbyshire District Council.

Telephone: 01283 595753 (Direct Line)

E-mail: [zoe.sewter@south-derbys.gov.uk](mailto:zoe.sewter@south-derbys.gov.uk)