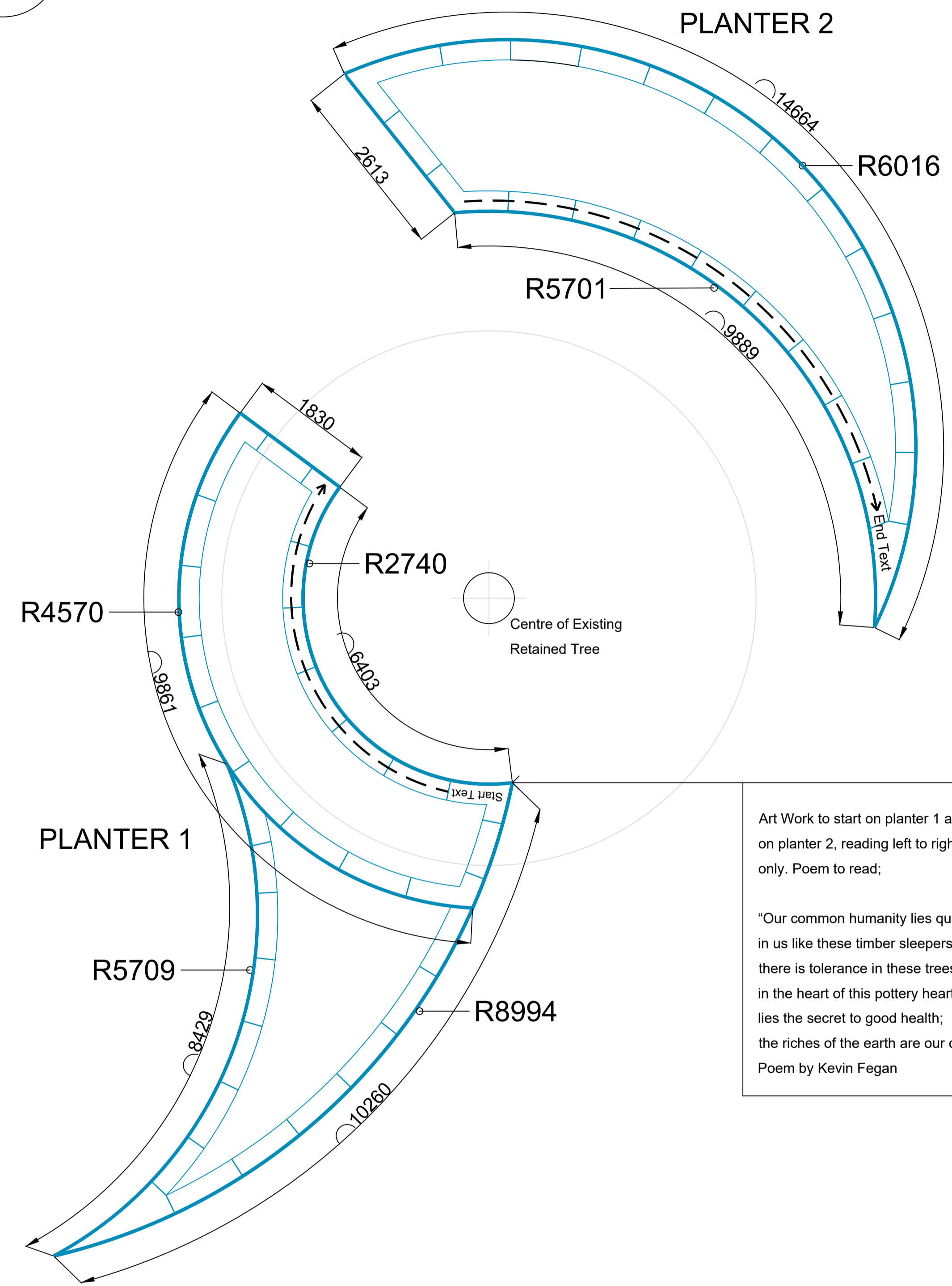


Do not scale this drawing (printed or electronic version).
 Contractors must check all dimensions from site.
 This drawing is copyright and is for use on this site only. This drawing should be read in conjunction with all relevant consultants drawings and specialist subcontractors / supply chain drawings and specifications.
 All works to be carried out in accordance with the latest British Standards / Codes of Practice unless specifically directed otherwise in the specification.
 Responsibility for the reproduction of this drawing in paper form, or issued in electronic format, lies with the recipient to check that all information has been replicated in full and is correct when compared to the original paper or electronic image.
 Graphical representations of equipment on this drawing have been co-ordinated, but are approximations only. Please refer to the specifications and / or details for actual sizes and / or specific contractor construction information.

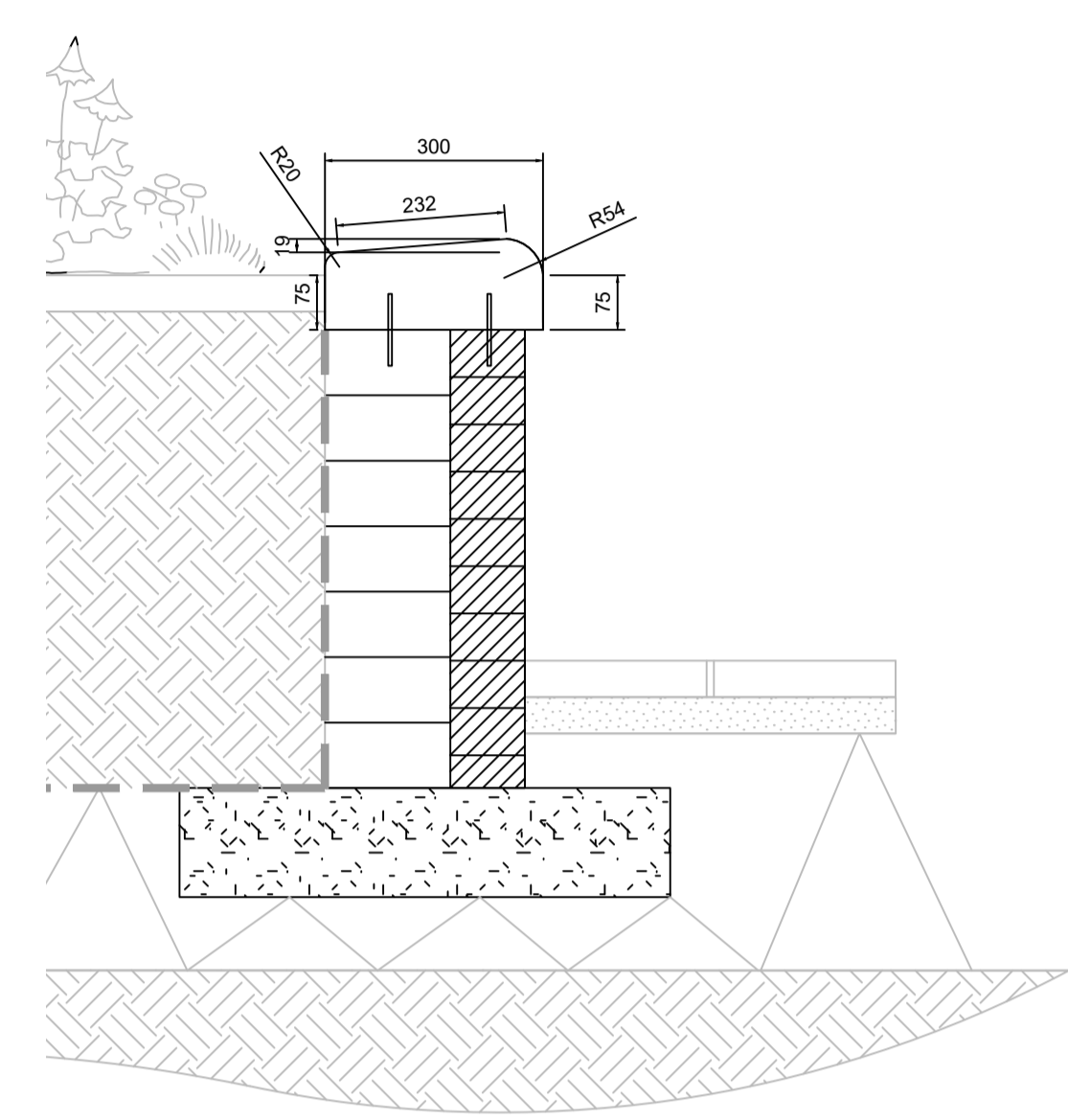
B
1
Planter Plan
Detail - Scale 1:50



Art Work to start on planter 1 and finish on planter 2, reading left to right on curved section only. Poem to read;

"Our common humanity lies quietly in us like these timber sleepers; there is tolerance in these trees; in the heart of this pottery hearth lies the secret to good health; the riches of the earth are our common wealth"
 Poem by Kevin Fegan

B
2
Coping
Section - Scale 1:10

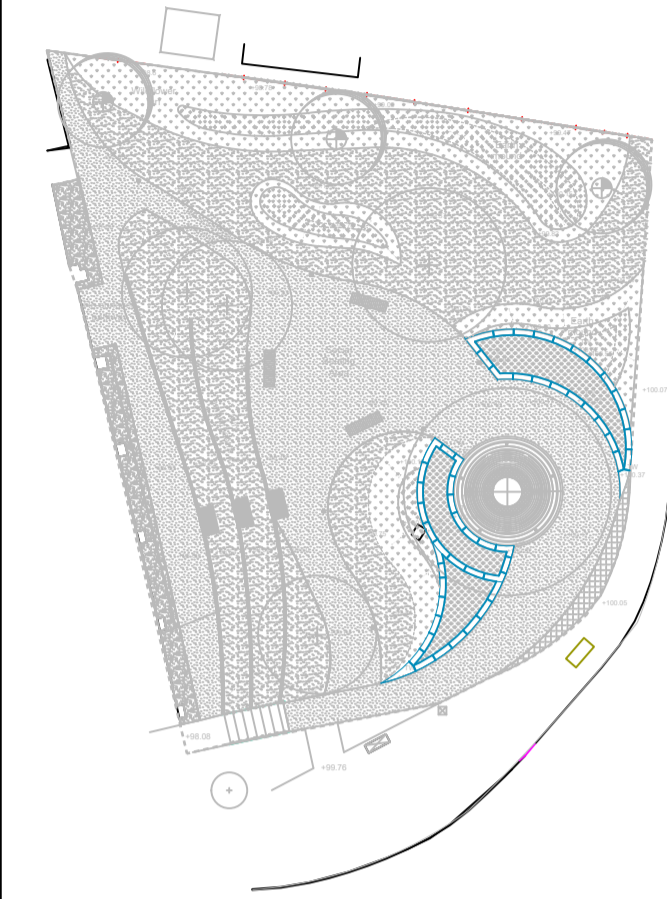


Key

 Curved Raised Planters
 Type: Staffordshire Blue Clay Bricks
 Size: 340 (w) x RH mm

 Bespoke Coping
 Type: Mid Grey Granite
 Size: 1000 x 300 x 125 mm
 Finish: Flamed
 Supplied by Hardscape or similar,
 Tel. 01204565500

Notes:-
Location Plan



DRAFT

REV.	DATE	DESCRIPTION	DRAWN	CHK'D
1	20/04/17	INFORMATION	KM	MT



Jactin House, 24 Hood Street, Manchester M4 6WX
 T: 0161 312 3131 W: urbangreen-space.co.uk

Client:
South Derbyshire County Council

Project:
Diana Garden, Swadlincote

Title:
Planter Coping and Artwork Detail

Status: INFORMATION			
Project:	11260	Drawn:	KM
Scale:	See Details	Date:	30/10/16
Checked:	MT	Approved:	MK
Drawing No:	11260_L09	Revision:	1