



F. McArdle
Chief Executive

Civic Offices, Civic Way,
Swadlincote, Derbyshire DE11 0AH

www.south-derbys.gov.uk

Please ask for: Democratic Services
Phone: (01283) 595722 / 595848
Minicom: (01283) 595849
DX 23912 Swadlincote
Email :
democraticservices@south-derbys.gov.uk

Date: 8 April 2015

Dear Councillor,

Housing and Community Services Committee

A Meeting of the **Housing and Community Services Committee** will be held in the **Council Chamber**, on **Thursday, 16 April 2015 at 18:00**. You are requested to attend.

Yours faithfully,

Chief Executive

To:- **Conservative Group**
Councillor Hewlett (Chairman), Councillor Smith (Vice-Chairman) and Councillors Ford, Harrison, Mrs. Hood, Lemmon and Murray.

Labour Group
Councillors Dunn, Frost, Mulgrew, Rhind, Richards and Shepherd.



AGENDA

Open to Public and Press

- 1 Apologies and to note any substitutes appointed for the Meeting.
- 2 To receive the Open Minutes of the Meetings held on 05.02.2015 and 12.03.2015.
Open Minutes 05.02.2015 **4 - 7**

Open Minutes 12.03.2015 **8 - 10**
- 3 To note any declarations of interest arising from any items on the Agenda
- 4 To receive any questions by members of the public pursuant to Council Procedure Rule No.10.
- 5 To receive any questions by Members of the Council pursuant to Council procedure Rule No. 11.
- 6 Reports of Overview and Scrutiny Committee
- 7 HOME ENERGY CONSERVATION ACT (HECA) PLAN – PROGRESS REPORT **11 - 36**
- 8 HOUSING CAPITAL INVESTMENT PROGRAMME 2012-2017 PROGRESS REPORT **37 - 43**
- 9 COMMUNITY PARTNERSHIPS SCHEME **44 - 51**

Exclusion of the Public and Press:

- 10 The Chairman may therefore move:-
That in accordance with Section 100 (A) of the Local Government Act 1972 the press and public be excluded from the remainder of the Meeting as it is likely, in view of the nature of the business to be transacted or the nature of the proceedings, that there would be disclosed exempt information as defined in the paragraph of Part I of the Schedule 12A of the Act indicated in the header to each report on the Agenda.
- 11 To receive the Exempt Minutes of the Meeting held on 05.02.2015.
Exempt Minutes 05.02.2015

12 To receive any Exempt questions by Members of the Council pursuant to Council procedure Rule No. 11.



HOUSING AND COMMUNITY SERVICES COMMITTEE

5th February 2015

PRESENT:-

Conservative Group

Councillors Hewlett (Chairman), Smith (Vice Chairman) and Councillors Ford, Harrison, Lemmon and Murray

Labour Group

Councillors Dunn, Frost, Mulgrew, Rhind and Shepherd

HCS/59 **APOLOGIES**

Apologies for absence were received from Councillor Richards who were substituted by Councillor Stuart

HCS/60 **MINUTES**

Councillor Dunn requested that it be recorded that he was present at the last meeting. The Open Minutes of the Meeting held on 27th November 2014, was taken as read, approved as a true record and signed by the Chairman.

HCS/61 **DECLARATIONS OF INTEREST**

The Committee was informed that no Declarations of Interest had been received.

HCS/62 **QUESTIONS FROM MEMBERS OF THE PUBLIC PURSUANT TO COUNCIL PROCEDURE RULE NO 10**

The Committee was informed that no questions from members of the public had been received.

HCS/63 **QUESTIONS FROM MEMBERS OF COUNCIL PURSUANT TO COUNCIL PROCEDURE RULE NO 11**

The Committee was informed that no questions from members of the Council had been received.

HCS/64 **REPORTS OF THE OVERVIEW AND SCRUTINY COMMITTEE**

There were no Overview and Scrutiny Reports to be submitted.

HCS/65 **PRESENTATION OF ICON ATHLETES – SOUTH DERBYSHIRE TALENTED ATHLETES**

Hanna Bardell-Smith, Sport & Health Partnership Manager gave a presentation on Derbyshire Sport, and introduced the South Derbyshire ICON Athletes;

William Allman, 17 - Rugby Union
Hannah Brayer, 13 – Triathlon
Rebecca Brayer, 14 – Triathlon
Eleanor Craig, 15 - Sailing and yachting
Matthew Dewis, 22 – Triathlon
Zak Greene, 7 – Cycling
James Hadden, 23 – Sailing
David Marklow, 17 – Shooting
Jor'dan McIntosh, 24 – Bobsleigh
William Nolan, 11 – Tennis
Ross Orme, 16 – Paddlesport
Lewis Richardson, 13 - Taekwondo and Kickboxing
James Rose, 13 – Skiing
Sam Smith, 17 - Sailing and yachting
Christopher Steeples, 22 - Swimming
Thomas Taylor, 20 – Archery
Rebekah Walton, 15 – Athletics
Lewis White, 14 – Swimming

HCS/66 **HOUSING REVENUE ACCOUNT BUDGET 2015/16 AND PROPOSED RENT INCREASE**

The Director of Finance and Corporate Services presented a report as part of the annual financial planning cycle, the report detailed the Housing Revenue Account's (HRA) base budget for 2015/16. The report also set out details of the proposed rent increase for 2015/16 in accordance with the strategy approved in the HRA Business Plan. Most of the assumptions and variables in the financial plan remained unchanged following the base budget review.

The biggest risk was still considered to be future rent rises. The Financial Plan is fundamentally based on the Government's national rent guideline from 2015/16, i.e. inflation +1% year on year. If corresponding income levels are not achieved, this will have an effect on projected spending plans and investment.

RESOLVED:-

- (1.1) That the average rent increase of 2.2% for tenanted properties for 2015/16 be approved.***
- (1.2) The proposed estimates of income and expenditure for 2015/16 for the Housing Revenue Account were considered and referred to the Finance and Management Committee for approval.***
- (1.3) The proposed estimates of income and expenditure for 2015/16 for the Housing Revenue Account were considered and referred to the Finance and Management Committee for approval.***

HCS/67 HEALTHY COMMUNITIES NETWORK – PROPOSAL TO BECOME AFFILIATED DERBYSHIRE MEMBERS

The Health Partnership Manager presented a report about The World Health Organisation's (WHO). Healthy Cities' initiative is a global network that engages local authorities and their partners in health development. The programme is well established across the European region with around 100 designated cities. The UK membership currently stands at 26 towns or cities and the network had now widened to counties under the umbrella of 'Healthy Communities, Derbyshire County would like to establish itself as the next Healthy Community. The network's role is to enhance learning and build capacity through sharing ideas, experience and best practice; to widen participation in the Healthy Cities movement. It will also support members; to develop and test innovative approaches to emerging public health issues and to become a strong collective voice for health, wellbeing, equity and sustainable development.

The report was welcomed by Members.

RESOLVED:-

That the adaptation of new 'Healthy Communities' model in South Derbyshire that will affiliate to the Derbyshire wide network be approved.

HCS/68 WORK PROGRAMME

Members of the Committee received a report from the Director of Community & Planning Services and Director of Housing & Environmental Services setting out the updated work programme.

RESOLVED:-

That the Committee considered and approved the updated work programme.

HCS/69 LOCAL GOVERNMENT ACT 1972 (AS AMENDED BY THE LOCAL GOVERNMENT [ACCESS TO INFORMATION] ACT 1985)**RESOLVED:-**

That in accordance with Section 100(A)(4) of the Local Government Act 1972 (as amended) the press and public be excluded from the remainder of the Meeting for the following items of business on the grounds that they involve the likely disclosure of exempt information as defined under the paragraphs of Part 1 of Schedule 12A of the Act as indicated in the reports of Committees.

Exempt Items**HCS/70 ANY EXEMPT QUESTIONS RECEIVED BY MEMBERS OF THE COUNCIL PURSUANT TO COUNCIL PROCEDURE RULE NO 11**

The Committee was informed that no exempt questions from members of the Council had been received.

HCS/71 **STAR SURVEY 2015**

The Policy and Performance Manager presented a report on the Housing Services full satisfaction survey which had been sent to all South Derbyshire District Council housing tenants in June 2012. The vast majority of respondents were satisfied with the service (92%); including 56% that were very satisfied and only 4% of respondents were dissatisfied to any extent with the service provided by Housing Services. The initial mail out of the new survey will take place in June 2015 and will be followed up by SMSR with two reminder letters. The offer to complete the survey on-line will be offered as an alternative method to the postal service. On the completion of the survey and after the final report has been received from the consultants at SMSR, the findings will be reported to the Tenants Panel and Members.

RESOLVED:-

(2.1) Members approved the survey of all current South Derbyshire District Council (SDDC) tenants to determine satisfaction with Landlord Services.

(2.2) Members approved the appointment of SMSR as lead consultants on the project and the expenditure of £9,198.65 plus VAT to complete the full survey and provide a final report to SDDC.

The meeting terminated at 6:40p.m.

J. HEWLETT

CHAIRMAN

HOUSING AND COMMUNITY SERVICES COMMITTEE

12th March 2015

PRESENT:-

Conservative Group

Councillor Hewlett (Chairman), Councillor Smith (Vice-Chairman) and Councillors Ford, Mrs Hall (substitute for Mrs Hood), Harrison, Lemmon and Murray.

Labour Group

Councillors Dunn, Frost, Mulgrew, Rhind, Richards and Shepherd.

HCS/75 **APOLOGIES**

Apologies for absence from the Meeting were received from Councillor Mrs Hood (Conservative Group).

HCS/76 **MINUTES**

The Open Minutes of the Meeting held on 13th January 2015 were taken as read, approved as a true record and signed by the Chairman.

HCS/77 **DECLARATION OF INTEREST**

No declarations of interest were received.

HCS/78 **QUESTIONS FROM MEMBERS OF THE PUBLIC PURSUANT TO COUNCIL PROCEDURE RULE NO 10**

The Committee was informed that no questions from members of the public had been received.

HCS/79 **QUESTIONS FROM MEMBERS OF COUNCIL PURSUANT TO COUNCIL PROCEDURE RULE NO 11**

The Committee was informed that no questions from Members of the Council had been received.

HCS/80 **REPORTS OF THE OVERVIEW AND SCRUTINY COMMITTEE**

There were no Overview and Scrutiny Reports to be submitted.

MATTERS DELEGATED TO COMMITTEE

HCS/81 **PHYSICAL INACTIVITY FUND**

The Health Partnership Manager summarised the report, highlighting the benefits of the scheme and the targets for engaging those deemed to be physically inactive. Queries relating to open water swimming venues, extreme sports activities for vulnerable groups and deprived area indices were responded to and noted. [Page 8 of 51](#)

RESOLVED:-

That the Committee approved the implementation of the South Derbyshire physical inactivity action plan.

(Councillor Smith joined the Meeting at 6.10pm, delayed by train issues)

HCS/82 NATURE RESERVE DECLARATION

The Open Space & Facilities Development Manager presented her report in relation to Swadlincote Woodlands. Queries relating to the treatment of the area, Ash die-back, Derbyshire County Council non-operational sites and the long-term financing of the site were responded to and noted.

RESOLVED:-

That the Committee approved Swadlincote Woodlands being put forward for declaration as a Local Nature Reserve, managed by South Derbyshire District Council.

HCS/83 IGNITING THE LEGACY – FACILITY DEVELOPMENT UPDATE

The Director of Community and Planning Services introduced the update, with the Culture and Community Manager providing further details in relation to the Green Bank Leisure Centre and Rosliston Forestry Centre, the Director of Community and Planning Services on Etwall Leisure Centre and the Open Space & Facilities Development Manager on the Eureka Park and Outdoor Gym developments. Queries relating to sustaining the parks, dog fouling, asbestos at Green Bank, cleaning exercise equipment at Green Bank and the further development of Newhall Park were responded to and noted.

RESOLVED:-

- 1. That the Committee noted the progress on Sport and Cultural Facility development.***
- 2. That the Committee approved the entry into the National Lottery Funding Agreement with Sport England for a grant award of £500,000.***
- 3. That the Committee noted the overspend on the Green Bank Leisure Centre repair and maintenance budget.***

HCS/84 CORPORATE PLAN 2009-15: PERFORMANCE MANAGEMENT REPORT (1 OCTOBER – 31 DECEMBER 2014)

The Director of Housing and Environmental Services referred to the above report. Councillor Harrison queried whether the anti-social incidents could be provided at Ward level. It was confirmed that such information could and would be provided in due course.

RESOLVED:-

That the Committee considered and approved progress against performance targets.

HCS/85 **WORK PROGRAMME**

Members were asked to consider the updated work programme and review its content where appropriate.

RESOLVED:-

That the updated work programme be approved.

The Meeting terminated at 7.00pm

J HEWLETT

CHAIRMAN

REPORT TO:	HOUSING AND COMMUNITY SERVICES COMMITTEE	AGENDA ITEM: 7
DATE OF MEETING:	16th APRIL 2015	CATEGORY: DELEGATED
REPORT FROM:	DIRECTOR OF HOUSING AND ENVIRONMENTAL SERVICES	OPEN
MEMBERS' CONTACT POINT:	BEVERLY WAGSTAFFE (01283 228769)	DOC:
SUBJECT:	HOME ENERGY CONSERVATION ACT (HECA) PLAN – PROGRESS REPORT	REF:
WARD(S) AFFECTED:	ALL	TERMS OF REFERENCE: HCS01

1. Recommendations

- 1.1 Members approve the 2015 Home Energy Conservation Act (HECA) Plan and submission to the Secretary of State for Energy and Climate Change Plan.

2. Purpose of Report

- 2.1 To bring before Committee the 2015 Home Energy Conservation Act (HECA) Plan, attached at appendix 1, to comply with a statutory duty upon the Council.

3. Content

- 3.1 In July 2012 the Secretary of State issued revised guidance to the Home Energy Conservation Act requiring plans to be drawn up by March 2013 setting out how the Council plans to reduce energy consumption, carbon emissions and reduce fuel poverty. Thereafter the Council is required bi-annually to report on progress made with delivery of the previous plan to Secretary of State for Energy and Climate Change.
- 3.2 Government guidance sets out the required content and structure of the plan. Essentially, the report must set out the energy conservation measures that the authority considers practical, cost effective and likely to result in significant improvement in the energy efficiency of residential accommodation in the district.
- 3.3 There is no obligation on the Council to meet or even set targets, nor sanctions for not doing so. The attached plan does not seek to set unrealistic or un-resourced activities, but sets out a pragmatic approach in the current economic climate.

- 3.4 The Council is a member of the Nottingham and Derbyshire Local Authority Energy Partnership (LAEP). This partnership comprises of 17 authorities and 2 County Councils. Where such a partnership is in place the Department of Energy and Climate Change (DECC) expects a single plan which includes a specific section relevant to each partner authority. The attached plan comprises of two parts. The first part sets out the current position across the LAEP area; the second part sets out the approach to energy conservation across South Derbyshire including progress against the 2013 HECA Plan.
- 3.5 The measures detailed in the 2013 Plan were those that were considered the most appropriate at the time to help mitigate fuel poverty in South Derbyshire. Since the 2013 report was published the policy context for energy efficiency measures has changed significantly. The most notable changes relate to the Green Deal and the Energy Company Obligation (ECO). These policy changes have presented challenges at a local level and one of the consequences has been a reduction in ECO funding available resulting in a greater need to provide impartial advice to households as to how they can reduce their fuel costs.
- 3.6 The work undertaken over the last two years to tackle fuel poverty includes:-
- Working in partnership with the LAEP we have secured funding and installed 52 new 'A' rated boilers and heating systems in circumstances of absent heating or where 'G' rated boilers existed.
 - We have agreed and published a new district-wide Affordable Warmth Strategy setting out our indication to reduce fuel poverty across the District.
 - We have worked with local landlords to promote the Green Deal and encourage home improvements alleviate fuel poverty.
 - We have secured Public Health funding to run an 'Energy Switching Project' in the two most health deprived areas in South Derbyshire (Newhall and Hartshorne).
- 3.7 Work planned for 2015 – 2017 includes:-
- To encourage households to reduce their fuel bills by taking a proactive approach to switching energy supply and taking up energy efficiency measures such as loft and cavity wall installation available via Green Deal and ECO (Energy Company Obligation).
 - To work with private landlords to ensure that they are taking appropriate steps to ensure that from 2018 rented properties have an energy rating of at least 'E' in accordance with the Energy Act 2013.
 - Work with Public Health raise the housing standards of vulnerable households whose health is put at risk by living in cold homes.

4. Financial Implications

4.1 None at present.

5. Corporate Implications

5.1 The Home Energy Conservation Act Plan supports delivery of the Corporate Plan "Lifestyle Choices" theme by contributing to the key project: -

- LP05 – Reducing the number of vulnerable households experiencing fuel poverty.

6. Community Implications

- 6.1 The Home Energy Conservation Act Plan will contribute reducing fuel bills for South Derbyshire's residents which will support households to sustain their homes and reduce levels of carbon emissions across the district.



**South
Derbyshire**
District Council

Home Energy Conservation Act Plan 2015



Contents

Page (TBC)

Preface

1. The Local Authority Energy Partnership
2. Home Energy Conservation Act (HECA)
3. Fuel Poverty
4. Collective Baseline Data from across the LAEP Area
5. LAEP HECA Report
6. Future Plans
7. Annexe 1 – Energy Conservation in South Derbyshire

Preface

Using powers under section 5(1)(b) of the Home Energy Conservation Act (1995) the Secretary of State for Energy and Climate Change requires all English authorities to prepare further reports by 31st March 2015 setting out the energy conservation measure that the authority considers practicable, cost-effective and likely to result in significant improvement in the energy efficiency of residential accommodation in the area.

South Derbyshire District Council has been working on local energy efficiency programmes for a number of years and our residents have been reaping the benefits.

The Council is an active member of the Nottinghamshire and Derbyshire Local Authority Energy Partnership (LAEP). The LAEP is made up of all 19 Councils across Nottinghamshire and Derbyshire and works to tackle fuel poverty and promote energy efficiency across the two counties.

For further information about the work of the LAEP, please contact:

Rina Jones, LAEP Co-ordinator

Tel: 01629 536130

Email: rina.jones@derbyshire.gov.uk

For further information about this plan, please contact:

Beverly Wagstaffe, Strategic Housing Manager, South Derbyshire District Council

Tel: 01283 221000

Email: strategichousing@south-derbyshire.gov.uk

1. Nottinghamshire and Derbyshire Local Authorities' Energy Partnership (LAEP)

- 1.1 The LAEP is a non-statutory partnership of all 20 councils across Nottinghamshire and Derbyshire, established in 1996 and continues to provide an excellent model of how councils can work together for mutual benefit.

This report covers collective activities across the following 14 LAEP housing authorities:

Nottinghamshire

Bassetlaw District Council
Broxtowe Borough Council
Gedling Borough Council
Mansfield District Council

Newark and Sherwood
District Council
Rushcliffe Borough Council

Derbyshire

Amber Valley Borough Council
Bolsover District Council
Chesterfield Borough Council
Derbyshire Dales District
Council
Erewash Borough Council

High Peak Borough Council
North East Derbyshire District
Council
South Derbyshire District
Council

- 1.2 Partnership activities are delivered via a membership service and a communications service which are funded through separate subscriptions. Councils benefit from support, information and communication services and collaborate on carbon reduction, affordable warmth and sustainable energy projects, sharing expertise and best practice.
- 1.3 Each council is represented on the Officer Working Group (OWG) which runs the partnership and funds are held by Derbyshire County Council.
- 1.4 The Partnership continues to provide an excellent model of how Councils can work together for mutual benefit.

1.5 LAEP Chair's introduction

- 1.5.1 The production of this report by our Partnership, which complements the individual reports of our member councils, is an example of how our long-standing collaboration has provided huge benefit and exceptional value to our partners over the years.
- 1.5.2 In increasingly challenging times for local government, this report provides evidence of how our partnership is striving to maximise the economic, social and environmental benefits to our councils and residents through its work on home energy conservation and affordable warmth.

Phil Keynes
Team Manager, Energy and Carbon Management
Nottinghamshire County Council

2. HECA reporting

- 2.1 The LAEP has a collective ambition to reduce carbon dioxide and fuel poverty across the area and acknowledges the legal requirements for local government to improve the energy efficiency of residential accommodation as outlined in the Climate Change Act 2008.
- 2.2 The LAEP also supports the aims of the 2001 UK Fuel Poverty Strategy to eradicate fuel poverty in England as far as reasonably practicable by 2016.
- 2.3 All LAEP district and borough councils submitted 2013 HECA reports and have links to them on their websites.
- 2.4 This HECA progress report is presented in three sections and provides an update on trends, strategies and initiatives since 2013 as LAEP councils work together to reduce domestic carbon dioxide emissions and fuel poverty:
 - Baseline information across Nottinghamshire and Derbyshire
 - LAEP HECA Report 2013-15
 - South Derbyshire District Council HECA Report 2013-15

3. Baseline Information

- 3.1 Baseline information on key issues enables local authorities to gauge the impact of collective and individual initiatives
 - Levels of fuel poverty
 - Domestic fuel consumption
 - Domestic carbon dioxide emissions
 - Energy Company Obligation funded measures
 - Green Deal measures
- 3.2 The following data has been collated from documents placed on the Department of Energy and Climate Change's website.

4. Levels of fuel poverty

- 4.1 Between 2010 and 2012 a new way of calculating the number of households in fuel poverty was introduced, temporarily running in parallel with the original definition.
- 4.2 In 2010 the **10% definition** was used whereby a household was in fuel poverty if it needed to spend more than 10 per cent of its income on fuel to maintain an adequate level of warmth.
- 4.3 From 2012 a new **Low Income High Cost (LIHC)** definition was applied which considers a household to be in fuel poverty if they have required fuel costs that are above average (the national median level) and, were they to spend that amount; they would be left with a residual income below the official poverty line.
- 4.4 Across Nottinghamshire and Derbyshire between 2010 and 2012 there was a small fall in the number and % of households in fuel poverty in most district and borough

areas, using the original 10% definition. Using the new Low Income High Cost definition results in **fewer people being categorised as being in fuel poverty** so the total number of and % of households in fuel poverty is shown as much lower.

4.5 The following table shows levels of fuel poverty in all the district and boroughs in Derbyshire and Nottinghamshire in 2010 and 2012 (both definitions used in 2012 for comparison), taken from <https://www.gov.uk/government/collections/fuel-poverty-sub-regional-statistics>

FUEL POOR HOUSEHOLDS	2010	2012	2012	2010	2012	2012
	10% definition		Low Income High Cost definition	10% definition		Low Income High Cost definition
Local Authority	Number of fuel poor households			% Fuel poor households		
Amber Valley	9,918	9,610	7,078	19.1	17.9	13.2
Bolsover	6,564	5,635	4,153	20.6	16.8	12.4
Chesterfield	9,191	8,028	6,217	20.0	16.8	13.0
Derbyshire Dales	7,483	9,314	4,917	24.4	29.6	15.6
Erewash	8,429	7,783	6,287	17.5	15.7	12.6
High Peak	7,027	8,248	5,281	17.8	20.7	13.3
NE Derbyshire	7,876	7,656	5,239	18.6	17.4	11.9
South Derbyshire	5,867	6,077	4,393	15.5	15.3	11.0
Bassetlaw	9,334	9,341	6,193	19.7	19.2	12.7
Broxtowe	7,825	7,260	5,736	16.5	15.2	12.0
Gedling	8,085	7,754	5,522	16.2	15.4	11.0
Mansfield	8,782	7,738	5,796	19.9	16.9	12.6
Newark & Sherwood	9,221	9,504	6,311	18.9	19.1	12.7
Rushcliffe	6,818	7,471	5,367	14.8	16.0	11.5

4.6 Domestic fuel consumption

The tables below show domestic gas and electricity consumption figures from 2010 and the most recent available figures from 2013, taken from

<https://www.gov.uk/government/statistical-data-sets/gas-sales-and-numbers-of-customers-by-region-and-local-authority> and

<https://www.gov.uk/government/collections/sub-national-electricity-consumption-data>

DOMESTIC GAS CONSUMPTION	2010		2013	
	Total (GWh)	Average Household (kWh)	Total (GWh)	Average Household (kWh)
Amber Valley	808.3	15,861	742	14,422
Bolsover	773.3	15,482	439	13,788
Chesterfield	607.6	15,312	611	13,107
Derbyshire Dales	469.2	15,218	409	16,026
Erewash	745.8	15,897	653	13,411
High Peak	674.4	14,691	577	15,349
North East Derbyshire	442.5	17,637	620	14,914
South Derbyshire	717.9	14,919	495	13,960
Bassetlaw	779.4	16,544	555	13,658
Broxtowe	629.5	16,971	678	14,270
Gedling	692.1	15,855	714	14,915
Mansfield	674.1	15,852	647	14,230
Newark and Sherwood	669.4	16,383	622	14,327
Rushcliffe	759.5	17,719	707	16,226

DOMESTIC ELECTRICITY CONSUMPTION	2010		2013	
	Total (GWh)	Average Household (kWh)	Total (GWh)	Average Household (kWh)
Amber Valley	225.2	4,251	215.6	4,025
Bolsover	211.3	3,915	121.9	3,665
Chesterfield	125.4	3,688	161.6	3,425
Derbyshire Dales	188.2	5,078	146.1	4,683
Erewash	168.7	4,049	184.8	3,747
High Peak	155.5	4,215	161.0	4,042
North East Derbyshire	195.1	3,945	162.4	3,725
South Derbyshire	208.8	4,348	163.4	4,058
Bassetlaw	167.8	4,373	198.7	4,086
Broxtowe	168.5	3,813	179.2	3,755
Gedling	217.9	4,212	199.8	3,987
Mansfield	168.4	3,840	163.3	3,588
Newark and Sherwood	205.5	4,452	208.8	4,194
Rushcliffe	167.2	4,322	196.6	4,203

4.7 Domestic carbon dioxide emissions

The tables below show the domestic carbon dioxide emissions per capita in tonnes CO₂ in 2010 and 2012, the most recent figures available.

All data is taken from <https://www.gov.uk/government/statistics/local-authority-emissions-estimates>

DERBYS	Year	Industry and Commercial	Domestic	Transport	Total
		Per capita tonnes CO ₂			
Amber Valley	2010	3.2	2.6	1.9	7.7
	2012	3.1	2.5	1.8	7.4
Bolsover	2010	6.9	3.1	4.6	14.6
	2012	6.6	2.9	4.5	14.1
Chesterfield	2010	2.3	2.5	1.5	6.4
	2012	2.5	2.4	1.4	6.4
Derbyshire Dales	2010	4.1	2.8	3.4	10.3
	2012	4.1	2.7	3.3	10.1
Erewash	2010	2.1	2.4	2.3	6.8
	2012	1.8	2.3	2.3	6.4
High Peak	2010	26.6	2.5	1.7	31.0
	2012	25.5	2.4	1.7	29.7
NE Derbyshire	2010	2.3	2.6	2.5	7.3
	2012	2.0	2.5	2.4	6.9
South Derbyshire	2010	3.6	2.5	3.3	9.4
	2012	3.3	2.4	3.2	8.9
DERBYS TOTAL	2010	6.1	2.6	2.5	11.2
	2012	5.8	2.5	2.5	10.8

NOTTS	Year	Industry and Commercial	Domestic	Transport	Total
		Per capita tonnes CO ₂			
Bassetlaw	2010	2.9	2.6	3.3	8.9
	2012	3.0	2.4	3.2	8.8
Broxtowe	2010	2.8	2.4	2.7	7.9
	2012	2.1	2.3	2.6	7.1
Gedling	2010	2.2	2.5	1.0	5.7
	2012	2.1	2.4	0.9	5.5
Mansfield	2010	1.7	2.7	1.2	5.6
	2012	1.6	2.7	1.1	5.4
Newark & Sherwood	2010	4.3	2.5	3.5	10.2
	2012	4.0	2.4	3.5	9.8
Rushcliffe	2010	2.0	2.5	2.2	6.9
	2012	1.9	2.4	2.2	6.6
NOTTS TOTAL	2010	2.6	2.6	2.2	7.5
	2012	2.5	2.5	2.2	7.2

4.8 Energy Company Obligation funded measures

A new obligation on energy utility companies replaced the previous Carbon Emissions Reduction Target (CERT) at the end of March 2013. The Energy Company Obligation Phase 1 (ECO1) runs from April 2013 to March 2015.

The ECO programme provides funding for energy efficiency measures for households in hard to treat properties and vulnerable or low income households who struggle to achieve affordable warmth.

The data below shows the number of ECO funded measures installed since the beginning of ECO to 30th September 2014 and has been compiled from

<https://www.gov.uk/government/statistics/green-deal-energy-company-obligation-eco-and-insulation-levels-in-great-britain-quarterly-report-to-september-2014>

Tables 1.11a) and d).

ECO OBLIGATION measures							
	Carbon Saving Target (CSO)	Carbon Savings Community (CSCO)	Affordable Warmth (HHCRO)	Total no. ECO measures delivered	All households	ECO measures per 1,000 households*	Households in receipt of ECO measures per 1,000
ENGLAND	311,600	175,591	309,600	796,791	22,542,903	35.3	28.7
E MIDLANDS	21,763	10,646	29,080	61,489	1,935,710	31.8	25.1
Derbyshire	3,535	742	4,598	8,875	338,213	26.2	20.6
Amber Valley	457	131	744	1,332	53,573	24.9	19.0
Bolsover	258	166	748	1,172	33,264	35.2	26.9
Chesterfield	831	132	712	1,675	47,180	35.5	28.8
Derbyshire Dales	114	34	169	317	31,197	10.2	7.5
Erewash	575	203	800	1,578	49,330	32.0	24.5
High Peak	270	43	470	783	39,821	19.7	17.2
NE Derbyshire	645	32	541	1,218	43,588	27.9	22.5
South Derbyshire	385	1	414	800	40,260	19.9	14.9
Nottinghamshire	4,408	1,490	5,106	11,004	340,212	32.3	25.2
Bassetlaw	498	271	750	1,519	48,631	31.2	24.4
Broxtowe	410	2	643	1,055	47,724	22.1	16.6
Gedling	671	40	755	1,466	50,096	29.3	22.1
Mansfield	619	543	1,022	2,184	45,520	48.0	36.9
Newark&Sherwood	1,236	266	592	2,094	49,778	42.1	34.9
Rushcliffe	458	2	331	791	46,771	16.9	12.7

* More than one measure installed in some homes

4.9 **Measures installed** Information on which measures have been installed is not available down to local authority level. However, on a national scale government statistics show a marked decline in the rate of loft and cavity wall insulation (from all sources including ECO and Green Deal) coinciding with the switch from CERT to ECO, as illustrated in the table below, taken from <https://www.gov.uk/government/statistics/green-deal-energy-company-obligation-eco-and-insulation-levels-in-great-britain-quarterly-report-to-september-2014>

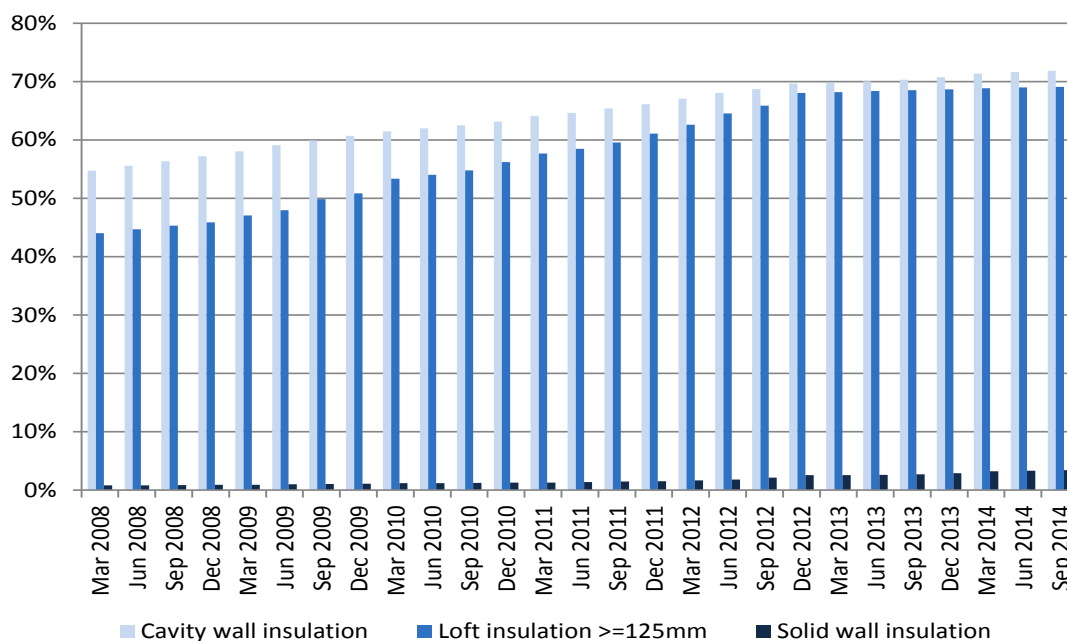


Table: Percentage of properties with insulation in Great Britain, March 2008 to September 2014

5. Green Deal measures

- 5.1 Green Deal statistics are currently only available from DECC at a regional level. A breakdown by administrative area should be available for the next quarterly release, due on 19/03/14. Data below taken from <https://www.gov.uk/government/statistics/green-deal-energy-company-obligation-eco-and-insulation-levels-in-great-britain-quarterly-report-to-september-2014> Table 1.7).

	Green Deal Assessments	House holds	GD Assessments per 1,000 households
England	288,999	22,542,903	12.8
North East	16,177	1,145,559	14.1
North West	51,658	3,046,753	17.0
Yorkshire and Humber	38,004	2,262,423	16.8
East Midlands	30,067	1,935,710	15.5
West Midlands	44,047	2,332,802	18.9
East	24,657	2,484,620	9.9
London	22,857	3,383,918	6.8
South East	37,077	3,638,436	10.2
South West	24,455	2,312,682	10.6

Green Deal Assessments lodged by region, up to 30th September 2014

6. LAEP HECA REPORT 2013-15

6.1 Boiler replacement scheme (2013)

In December 2012 DECC awarded over £2 million to the LAEP to tackle fuel poverty as part of a nationwide local authority competition. This was the third largest grant awarded, despite stiff competition and a significantly oversubscribed fund, demonstrating the advantage of working in partnership for the benefit of all local residents.

Funding was shared between fourteen district and borough councils across the two counties and was invested in new boilers, heating systems and insulation to help vulnerable residents keep warm and well in winter.

Installations began in January 2013 and were completed by end April 2013, an average of 50 per local authority area. The success of the project was the result of fantastic team work by officers from LAEP councils who worked hard to identify eligible households and deliver measures within the very tight timescales.

In total the LAEP delivered **729 energy efficiency measures** to households, comprising:

- 511 'G' rated boilers were replaced with 'A' rated boilers
- 143 new heating systems were installed
- 85 properties received loft and/or cavity wall insulation
- Many properties received enabling works
- 36 boilers and heating systems repaired
- 2 renewable energy systems were installed in off gas properties

"I recently had a new boiler installed after having no heating or hot water for a number of years. For the first time my 18 month old daughter can have a proper hot bath rather than kettles in the sink."

Chesterfield resident

These measures translate into energy bill savings for householders in the region of **£220,000 per year**. This equates to approximately **7,140 tonnes of CO² per year**

7. Health and Housing Research Project (2013)

7.1 Evaluation of the boiler scheme outlined in 2.1 revealed that around 38% of assisted households included someone suffering from a long term health condition made worse by a living in a cold home. It also found that many fuel poor households were not eligible for the fully funded affordable warmth element of ECO either because they were not on eligible benefits or because the works required on their heating systems were non-standard or extensive.

7.2 In an extension to the original boiler replacement project and to further investigate these issues, DECC approved a request from the LAEP to use project underspend to identify and assist fuel poor households with a long term health condition. This work was carried out from May to September 2013 across Notts and Derbys. Evaluation showed that out of 29 households assisted, 25% met the ECO affordable warmth benefits eligibility criteria but were still unable to have energy efficiency improvement works carried out without making a personal contribution of between £1000 and £1500. This is due to the non-standard nature of the works required and the impact this has on the amount of ECO funding available. Non-standard works include:

"My husband and I had both been in hospital, very poorly, and came out when the snow was bad. It was too cold to stop here; we could only come home once the boiler had been replaced."

Newark resident

- Properties with only secondary heating such as coal fires or electric bar heaters
- Solid fuel (coal) back boilers, wood burners or LPG boilers in off gas properties
- Partial and full sets of storage heaters.

7.3 The research highlighted the inability of the current ECO affordable warmth programme to fully fund energy efficiency measures for some of the most vulnerable householders, leaving some of them paying up to 30% of their income on fuel bills.

8. Derbyshire Healthy Home programme (2014 - ongoing)

8.1 The results of the health and housing research project (2.2) have been applied to a new health and affordable warmth programme. Derbyshire Public Health have commissioned the LAEP to develop and deliver the 'Derbyshire Healthy Home' programme across the county, providing **£188k** revenue funding per year for two years.

8.2 The programme is combining information on health, housing and income at a household level to target fuel poor householders with long term health conditions made worse by a cold home. The aim is to reduce the incidence of Excess Winter Deaths and the cost to the NHS of the impact of cold related illnesses, particularly 'non-elective' (emergency) admissions to A&E. Due to data protection and patient privacy issues, GP surgeries will write to target households inviting them to contact the LAEP project team for assistance.

8.3 Whilst accurate targeting should ensure that most householders assisted are eligible for affordable warmth ECC (HHCRO), some homes will require additional funding to enable improvements to go ahead, as outlined in 2.2. DECC agreed in January 2014 to allow LAEP to carry forward the final balance from the original boiler replacement project funds to top up capital works associated with this project; Derbyshire's share is around £114k.

8.4 National Grid has recognised the project's innovative approach with an award of **£40k** to establish a hardship fund to further assist vulnerable householders

8.5 The project will assist households from February 2015 to August 2016. Outcomes will be rigorously monitored and evaluated and if successful funding is likely to continue, albeit at a lower level. DECC is very interested in this approach in terms of shaping delivery of fuel poverty and health related support services through local authorities.

9. Potential for a health and housing project in Nottinghamshire (2015)

9.1 The Nottinghamshire LAEP authorities are looking closely at how the Derbyshire Public Health project develops and will invest their share of the underspend referred to in 2.3 (around £90k), to address fuel poverty and health related issues in a similar way. Exploratory discussions with Nottinghamshire Public Health and CCGs in the county demonstrate a desire to collaborate on this issue. Provisional project ideas involve working closely with CCGs to engage one GP Practice in each district who would identify their most resource intensive patients with cold-sensitive long term conditions. Existing resources would enable councils to address the affordable warmth needs of at least 5 households identified in this way, even if none were HHCRO eligible. Rigorous monitoring by the CCG on the impact of interventions on health outcomes would be needed to justify the release of funding to enable project continuity.

10. LAEP Green Deal Pioneer Places (2013-14)

10.1 In January 2013, the LAEP successfully bid to DECC to fund a proposal to create demand for the Green Deal across Nottinghamshire and Derbyshire. Four LAEP councils received funding to run pilot Green Deal projects each council targeted promotions at different housing types:

- Amber Valley Borough Council (Derbys): The private rented sector
- Chesterfield Borough Council (“): Mixed hard-to-treat properties
- Newark and Sherwood District Council (Notts): Off gas homes, high council tax
- Rushcliffe Borough Council (“): Large homes, old boilers, range of finance options

	Green Deal Assessments		Green Deal Plans	
	Target	Completed	Target	Completed
Amber Valley	100	27	50	0
Chesterfield	100	26	50	0
Newark	100	11	50	8
Rushcliffe	100	72	50	50

10.2 The project evaluation report was issued in July 2014. In total, 136 properties had a Green Deal Assessment carried out compared with an initial target of 400. The project aimed to convert 50% of assessments into plans and achieved 43% (58 plans). The lower than expected results were influenced by:

- Low levels of public awareness about the Green Deal
- Slow return of assessments to householders leaving no time to offer plans within project time frame
- The Golden Rule not being met due to vague estimates in the Assessments and higher than expected installation costs due to ‘other works’.

10.3 Keeping customers engaged throughout the complex process proved very difficult; Green Deal Assessors sometimes proved unreliable and this led the project to question the effectiveness of the Green Deal Assessor verification process.

11. LAEP ECO scheme development (2013)

11.1 In early 2013 the LAEP considered establishing an area wide ECO scheme, to provide residents in private sector housing with a reliable offer from a trustworthy source in a similar way to the Warmstreets scheme that the LAEP set up under CERT. Two comprehensive briefings were produced for managers outlining the opportunities and options available.

11.2 One option LAEP considered was to develop a local not-for-profit intermediary or energy agency which would maximise ECO funding drawn into the area. It would be sustained by turning local knowledge, housing data and referral networks into high quality leads for the obligated parties in return for a referral fee. With the utilities under pressure to discharge their ECO obligations as cost effectively as possible, the efficiencies resulting from engaging with 14 councils through the LAEP network should also be reflected in a good offer for LAEP residents.

- 11.3 Endorsing or promoting the offer from any utility to residents requires a tendering process to identify a partner. As a first and informal step in this selection process, the seven largest energy utilities were invited to a LAEP meeting in July 2013 to outline what they could offer a two county partnership. British Gas, SSE, EON, Scottish Power and EDF attended and outlined their priorities to the LAEP.
- 11.4 Unfortunately it became clear that the focus of all utility companies at this stage in the first ECO phase was external solid wall insulation in areas of concentrated social housing due to the potential for the largest carbon savings; there was very little on offer in terms of loft and cavity wall insulation or heating installations in the private sector.
- 11.5 Cuts in ECO targets later in 2013 undermined this potential funding stream so the LAEP put these plans on hold.

12. LAEP Green Deal Communities bid (2013-14)

- 12.1 DECC launched a new £20m Green Deal Communities scheme for local authorities in late July 2013 to help households benefit from the Green Deal on an area basis; this quadrupled to £80m in the autumn.
- 12.2 Based on its success detailed in 2.1, the LAEP decided to apply for this funding with the understanding that its previous intentions to engage Green Deal and ECO Provider(s) outlined above would be incorporated into these new plans.
- 12.3 The meeting with utilities referred to in 2.6 was also used to help develop a LAEP bid to this fund. As outlined, the utilities' focus was on social housing where they could bank carbon as cheaply as possible through high volumes and high take up. However, there was some potential for a LAEP scheme for private sector 'right to buys' to be incorporated into their broadly social housing schemes. Unfortunately none had a good offer for SWI for one-off private sector homes.
- 12.4 The LAEP submitted a final bid in December 2013 for over £2m on behalf of 14 district councils and Derbyshire and Nottinghamshire County Councils, for a retrofit scheme in each districts to treat a total of 500 properties. In line with DECC guidance the majority of funding was to subsidise the cost of SWI to both attract matched ECO funding from energy utility companies and to ensure that the remaining cost payable by the householder was eligible for Green Deal finance. The key element of the bid was to combine effective community engagement with evidence-based targeting using LAEP's housing and householder database.
- 12.5 This involved a very significant commitment of LAEP resources, including extensive efforts to establish a framework of ECO providers/contractors to deliver the scheme through either Efficiency East Midland's existing framework and through a tender placed by the LAEP on the public sector procurement platform, Source Derbyshire. The latter proved very difficult to achieve as it was obviously not possible to realistically define, or confirm, the total value of the tender contract prior to receiving funding.

12.6 64 proposals were submitted in total and unfortunately the LAEP bid was unsuccessful. Feedback from DECC indicated that in particular they did not have confidence that an ECO provider had been secured to deliver the scheme.

“LAEP’s bid was ambitious and well designed and would have helped each council to roll out private sector solid wall insulation schemes in their areas.”

Jane Thomas, Private Sector Housing Manager, Chesterfield

13. The LAEP Communications Service (ongoing)

13.1 The community focused communications service is funded by an optional £1500 p.a. subscription per authority. The service provides advice and information on energy efficiency, sustainable energy and affordable warmth directly to communities, schools, local authority staff, businesses and the general public on behalf of the LAEP.

13.2 The Communications Service has been collectively procured by Marches Energy Agency (MEA) through Service Level Agreements (SLA) since 2009 and provides a level and quality of delivery that would have been unaffordable for individual councils. Fifteen LAEP authorities participated between 2013 and 2015.

13.3 A core service provides:

- **A public facing website** www.everybodys-talking.org providing information on energy efficiency, sustainable energy, affordable warmth and community activity
- **A twitter account** with more than 170 followers
- **Monthly E-Bulletins** sent to more than 300 people representing more than 85 community groups and around 100 public and third sector organisations
- An **‘Ask Me a Climate Question’ Service** which allows community groups to request up to half a day’s desk-based research from MEA. The service received 24 enquiries in 2013-14 and 18 by 6th Feb 2015
- LAEP annual **Eco Open Homes Event** aims to inspire householders to make eco improvements to their homes by visiting others who have already done so. In March 2013, 12 homes and other buildings in the area open their doors to more than 90 visitors; in 2014, 325 people visited 17 properties and the event is planned again for May 2015. The event has its own website: www.everybodys-talking.org/ecohomes

13.4 An additional tailored service enables councils select additional services which best meet their needs; the most popular is visits by the Fantastic Home, a **mobile energy efficiency exhibition**, three times during the year to offer energy efficiency advice at community fairs, fetes, festivals, market days and busy shopping areas (see photos). Other activities have included presentations at Landlord Forums, workshops at community conferences, workshops for local authority staff, and briefings for elected members. In 2013-14, 1424 people engaged with the Fantastic Home vehicle.

MEA also seeks funding for other projects in the area and during 2013-14 secured funding totally £28,130 for other energy efficiency focused work in the area.



14. Looking Ahead 2015-17

LAEP plans and aspirations during the next HECA period:

- Deliver, monitor, improve and evaluate Derbyshire Warm Homes programme with a view to secure continued revenue funding for staff beyond the current project time frame of September 2016. The LAEP will further engage with the CCGs in Derbyshire to demonstrate the impacts of affordable warmth interventions on health outcomes and costs, aiming to secure NHS funding in future for preventative support for high risk patients.
- Design, agree and secure funding and support for a Nottinghamshire health and housing programme, working closely with CCG and Public Health colleagues.
- Strive to offer affordable warmth support to a larger proportion of vulnerable fuel poor households not just those with existing health conditions, through innovative funding and partnership arrangements, building on the success and expertise gained through the health and housing programmes.

Annexe 1 - Approach to Energy Conservation in South Derbyshire

Action		Timing
Progress against 2013 – 2015 Actions		
Progress	<ul style="list-style-type: none"> • In the last 2 years SDDC has achieved the following: • 52 'A' rated energy efficient boilers through the DECC funded scheme • 4 'A' rated energy efficient boilers installed for residents with serious health conditions, exacerbated by living in a cold home, using underspend from the DECC Project • An Affordable Warmth Strategy was introduced in 2014 • A landlord forum was held in September 2013, attended by 15 local private landlords who received a presentation about the Green Deal and the benefits for landlords • In September 2014 funding was secured from Public Health to run an Energy Switching Project. This pilot project will use data to identify and target the 2 most health deprived areas in South Derbyshire • In May 2013 funding through Public Health was used to purchase Cold Weather Alarms which will link with the First Contact Scheme • In October 2014 a joint event was held with CAB to promote energy efficiency and the Green Deal 	Done
Local Energy Efficiency Ambitions and Priorities for 2015 - 2017		
Green Deal	<p>South Derbyshire District Council will maintain links to appropriate Government websites so that residents have access to accurate information about the Green Deal.</p> <p>We will continue to work closely with DCC Trading Standards to provide consumer protection advice</p>	March 2017
Energy Company Obligation (ECO)	<p>South Derbyshire District Council will use data to maximise the ECO investment into the District through more effective targeting.</p> <p>We have worked closely with partners to make information available and have successfully formed positive relationships with the CAB, Age UK, Southern Derbyshire Clinical Commissioning Group to increase access to energy advice for more vulnerable residents. We will continue to work with partners to provide advice to residents to be able to consider the various options of securing energy efficiency investment to improve their homes.</p>	March 2017
Energy Efficiency Measures	<p>South Derbyshire District Council will ensure that planning policies support retrofit installation of energy efficiency measures whilst seeking to protect heritage of properties.</p>	March 2016

Improving standards in the private rented sector	<p>We will continue to use data to inform further targeting of private rented properties across the district.</p> <p>We will continue to support private landlords in ECO eligible areas to attract investment.</p> <p>We will continue to raise awareness of energy efficiency across the district with both tenants and private landlords.</p> <p>We will continue to work with private landlords to encourage energy improvements where the EPC is below 'E'</p>	March 2017
Health	Working with partners	
	<p>South Derbyshire District Council will continue to work with health to seek commitment to identify vulnerable households whose health is put at greater risk by living in a cold hard to heat home with a view to providing options and investment.</p> <p>We will actively support the LAEP in the delivery of the Derbyshire County Public Health Healthy Homes Project to systematically identify and target households most in need through their poor health, living on a low income and in an inefficient home.</p>	March 2017

Measures We Propose To Cost Effectively Deliver Energy Efficiency Improvements In Residential Accommodation		
	<ul style="list-style-type: none"> a. Identify local partners for implementation of area based energy measures across the District. b. Identify target areas and priority roll out for energy schemes c. Determine any synergies with other refurbishment work and other wider Council objectives d. Build on the relationship with Public Health and Clinical Commissioning Group to increase access to affordable warmth e. Support the delivery of the Derbyshire Healthy Homes Project f. Support the delivery of the Derbyshire Anti-Poverty Strategy 	March 2017
Time Frame For Delivery And National And Local Partners		
	We are currently working with The Local Authority Energy Partnership, National Energy Action (NEA), Marches Energy Agency (MEA), and Apex Carbon Solutions. We will keep this approach under review to ensure our objectives are being met.	March 2017
Ambitions		
	<p>South Derbyshire District Council will aim to support the ambition to provide insulation to all homes by 2020.</p> <p>The original fuel poverty target as described in the 2012 HECA Guidance, has been replaced with a new statutory target to 'ensure that as many fuel poor homes in England as is</p>	March 2020 (review March 2017)

	<p>reasonably practicable achieve a minimum energy efficiency rating of a Band C by 2030. In addition to the 2030 statutory target, the Government consultation, “Cutting the cost of keeping warm” also proposed the following interim milestones:</p> <ul style="list-style-type: none">As many fuel poor homes in England as is reasonably practicable to Band E by 2020As many fuel poor homes in England as is reasonably practicable to Band D by 2025	
--	---	--

Obtaining alternative versions of this document If you would like this document in another language, or if you require the services of an interpreter, please contact us. This information is also available in large print, Braille or audio format upon request. **Phone: 01283 595795**
E-mail:customer.services@south-derbys.gov.uk

Jeśli chcieliby Państwo otrzymać ten dokument w innym języku lub potrzebują Państwo usług tłumacza, prosimy o kontakt. Informacje te są również dostępne na życzenie w wydaniu dużym drukiem, w alfabecie brajla lub w wersji audio.

如果你需要这份文件的中文翻译·或者需要传译员的帮助·请联系我们。这些数据也备有大字体印本、盲人点字和录音带，欢迎索取。

ほかの言語でこの文書をご希望の場合、もしくは通訳サービスをご希望の場合はご連絡ください。

またこの情報は、ご要望により大きなプリント、点字版、また音声形式でも承っております。

यदि आपको ये दस्तावेज किसी दूसरी भाषा में चाहिये, या किसी दुभाषिये की सेवाओं की जरूरत है तो हमें सम्पर्क करने की कृपया करें। ये जानकारी माँग करने पर वड्डे अक्षरों, ब्रेल या आडिओ के रूप में भी उपलब्ध करवाई जा सकती है।

ਜੇ ਤੁਹਾਨੂੰ ਇਹ ਦਸਤਾਵੇਜ ਕਿਸੇ ਦੂਸਰੀ ਭਾਸ਼ਾ ਵਿਚ ਚਾਹੀਦਾ ਹੈ, ਜਾਂ ਕਿਸੇ ਦੁਭਾਸ਼ੀਏ ਦੀਆਂ ਸੇਵਾਵਾਂ ਦੀ ਲੋੜ ਹੈ ਤਾਂ ਸਾਡੇ ਨਾਲ ਸੰਪਰਕ ਕਰਨ ਦੀ ਕ੍ਰਿਪਾ ਕਰੋ ਜੀ ਇਹ ਜਾਣਕਾਰੀ ਮੰਗ ਕਰਨ ਤੇ ਵੱਡੇ ਅੱਖਰਾਂ, ਬ੍ਰੇਅਲ ਜਾਂ ਆਡਿਉ ਦੇ ਰੂਪ ਵਿਚ ਵੀ ਉਪਲੱਬਧ ਕਰਵਾਈ ਜਾ ਸਕਦੀ ਹੈ।

اگر آپ یہ ڈاکیومنٹ کسی اور زبان میں چاہتے ہوں، یا اگر آپ کو کسی ترجمان کی خدمات درکار ہوں، تو براہ کرم ہم سے رابطہ کریں۔ درخواست کرنے پر یہ معلومات بڑے پرنٹ، بریل یا آڈیو فارمیٹ میں بھی دستیاب ہیں۔

REPORT TO:	HOUSING AND COMMUNITY SERVICES COMMITTEE	AGENDA ITEM: 8
DATE OF MEETING:	16th APRIL 2015	CATEGORY: Delegated
REPORT FROM:	DIRECTOR OF HOUSING AND ENVIRONMENTAL SERVICES	OPEN
MEMBERS' CONTACT POINT:	LEE CARTER Ext 5797	DOC:
SUBJECT:	HOUSING CAPITAL INVESTMENT PROGRAMME 2012-2017: PROGRESS REPORT	REF:
WARD(S) AFFECTED:	ALL	TERMS OF REFERENCE: HCS01

1. Recommendations

- 1.1 Members approve this year end 2014/2015 progress report for the Housing Capital Investment Programme which includes both the Improvement Programme to current stock and the New Build and Acquisition Programme.
- 1.2 For future progress reports to be presented to the respective June and November Committee dates, this will ensure actual completions for end of year and half yearly milestones (31 March and 30 September) can be presented rather than the current predicted/anticipated completions, which have to be used to meet the current committee dates.

2. Purpose of Report

- 2.1 To provide full and half year progress reports on the Capital Improvement, new build and acquisition programme, as requested at the February Committee 2012, which details the anticipated progress to the end of March 2015 and the remainder of the five year programme to March 2017.

3. Section A - Improvement Programme

- 3.1 Expenditure and Completions.
 - 3.1.1 This report details the progress made in respect of the programme approved in 2012 in terms of expenditure, and numbers of properties, where specified.
 - 3.1.2 The following table shows what was originally anticipated to be completed by 31 March 2015 compared to the actual outturn (albeit March 2015 remains an estimate, at the time of writing this report).

3.1.3 Although there is clear variance in some projects from the programme as at 31 March 2015, no individual or combined projects have gone over the overall 5 year budget.

3.1.4 The expenditure and numbers completed table shows all of the schemes. Some of the schemes, however, did not have property numbers indicated in the original programme, meaning a variance of numbers completed cannot be given.

Scheme	Total budget (£)/ Numbers Completed to 31 st March 2015	Total Anticipated Expenditure (£)/ Numbers Completed to 31 st March 2015	Variance – Expenditure (£)/ Numbers Completed	Percentage Complete
Planned External Maintenance	£1,954,000	£1,723,305	-£230,695	88.2%
Property Numbers	1,849	1,516	-333	82.0%
Kitchen Replacements	£2,300,000	£1,582,788	-£717,212	68.8%
Property Numbers	822	587	-235	71.4%
Bathroom Replacements	£970,000	£1,075,041	£105,041	110.8%
Property Numbers	538	498	-40	92.6%
Central Heating Upgrades	£2,550,000	£2,626,261	£76,261	103.0%
Property Numbers	850	997	147	117.3%
Electrical Rewires	£1,750,000	£1,814,266	£64,266	103.7%
Property Numbers	796	692	-104	86.9%
Roofing	£1,800,000	£2,885,883	£1,085,883	160.3%
Property Numbers	317	587	270	185.2%
External Insulation	£510,000	£561,868	£51,868	110.2%
Property Numbers	-	89		
Loft Insulation	£190,000	£16,492	-£173,508	8.7%
Property Numbers	-	112		
Door Replacements	£450,000	£327,520	-£122,480	72.8%
Property Numbers	-	574		
Window Replacements	£250,000	£430,307	£180,307	172.1%
Property Numbers	-	170		

Scheme	Total budget (£)/ Numbers Completed to 31 st March 2015	Total Anticipated Expenditure (£)/ Numbers Completed to 31 st March 2015	Variance – Expenditure (£)/ Numbers Completed	Percentage Complete
Showers and Extract Fans	£1,600,000	£758,380	-£841,620	47.4%
Property Numbers	1,600	839	-761	52.4%
Smoke Alarms	£620,000	£226,837	-£393,163	36.6%
Property Numbers	-	1,450		
Non Traditional Properties	£220,000	£14,349	-£205,651	6.5%
Property Numbers	-	0		
Environmental and Garage Site Improvements	£450,000	£126,619	-£323,381	28.1%
Numbers	-	2		
Community Rooms / Communal Areas	£50,000	£14,093	-£35,907	28.2%
Numbers	-	1		
Lift Replacements	£90,000	£126,899	£36,899	141.0%
Numbers	3	3		
Unforeseen Decent Homes Work	£172,019	£84,487	-£87,532	49.1%
Property Numbers	-	23		
TOTAL PROGRAMME	£15,932,791	£14,403,513	-£1,529,278	90.4%

Table 1 – Budget, Actual Expenditure and Completed Properties

3.1.5 From slower than anticipated starts on the new contracts that commenced in January 2014 (i.e. Planned Maintenance, Kitchens, Bathrooms, Door and Window Replacements and over-bath Showers), due to the Corporate procurement review in 2013, the number of completions are now beginning to realign closer with the original programme.

3.2 Decent Homes Standard

- 3.2.1 All of the Council's properties remain compliant with the Decent Homes Standard as a result of the works undertaken, and this is expected to be the same at the end of the current financial year and at the completion of this programme in March 2017.
- 3.2.2 Routine property inspections or complaints from tenants continue to reveal unforeseen non-decent elements e.g. heating failures (that were originally planned to be improved post 2017) necessitating them being brought forward to the current five-year plan which is funded from the Unforeseen Decent Homes budget.
- 3.2.3 The 5 year programme was established based on the 2009 stock condition survey and inevitably over that time things change. The requirement to add additional properties to the programme increases, as unforeseen failures occur that could not have reasonably been predicted in 2009. However, it is still anticipated that overall, the original programme approved in February 2012 of £27.5m will not be exceeded, however, ensuring the stock remains decent is a fundamental principle of this programme, and continues to achieve target.

3.3 Procurement.

- 3.3.1 Contracts are in place for all of the major schemes, with the exception of any future External Wall Insulation. The previous tender was kept to a maximum two-year contract due to the uncertainty on grant aid. On completion of the existing works, a new contract will be procured prior to any further properties being insulated to ensure maximum exposure to obtaining grant funding. Currently an application is with the Energy Savings Trust for 6 further properties.
- 3.3.2 Of the recently tendered contracts, the first contract to be reviewed for a possible extension is the Domestic Electrical Rewiring Contract which was awarded to British Gas Social Housing Limited (trading as P.H.Jones) in November 2012. The contract is currently being negotiated for a further two years, based on the original contract terms and the fact the contractor is performing very well and achieving all its KPIs.

3.4 Environmental and Garage Sites Improvements

- 3.4.1 The pilot garage site improvement works were completed at Chatsworth Road, Newhall in August 2014 and all 23 inadequate garages have been replaced with 21 wider and longer garages to suit modern cars. All garages are currently let and the feedback so far has been very positive from customers, bringing back to life a former asset that was a liability to the Council.
- 3.4.2 The success of this project will drive the formalisation of a strategy to roll out across the district and proposals are now being prepared for four/five other sites and progressed in line with the approved budget.

3.6 External Wall Insulation

3.6.1 The Council has been extremely successful in obtaining grant funding and a total of 89 properties have received external insulation during the programme.

3.6.2 The works undertaken to-date received funding of £222,645 from Department of Energy and Climate Change (DECC).

3.7 Non- Traditional Properties.

3.7.1 Following full survey work by Michael Dyson and Associates of the non-traditional properties, arrangements are being made to follow up on the highlighted short term repairs.

3.7.2 There are some areas of deterioration in concrete joints and areas of decay in timber elements. The original programme budgeted for £200,000 worth of repairs, which are now estimated to be in the region of £652,500. Further work on the viability of such long-term investment now needs to be undertaken, and will be reported to committee in the early part of 2016.

4. Section B - New Build and Acquisition Programme

4.1.1 In April 2013, the Council approved the first phase of commitment to increase its stock by building new homes and/or by acquiring them, which the Council had not been able to do since 1991. The budget agreed for the provision of 50 homes was £5.37m.

4.1.2 One of the first actions completed was the 'buying back' of the only leased flat in a block of twenty-six flats at Smallthorn Place, Woodville, which has the added benefit of increasing the Council's strategic options relating to the site.

4.1.3 Full Planning Permission has been approved for 49 properties, as follows:

	Address	Number of Dwellings	House Types	Contractor	Start Date	Completion Date
1.	Lullington Road, Overseal	12 Dwellings	4 X 1 beds 5 X 2 beds 2 X 3 beds 1 X 4 beds	Robert Woodhead	June 2015	March 2016
2.	Coton Park, Linton	23 Dwellings	4 X 1 beds 10 X 2 beds 8 X 3 beds 1 X 4 bed	Keepmoat	March 2015	December 2015
3.	Pennine Way, Swadlincote	10 Dwellings	2 X 1 bed bungalows 6 X 2 beds 2 X 3 beds	Robert Woodhead	June 2015	March 2016
4.	St Catherine's Road, Newhall	2 Dwellings	2 X 2 beds	-	-	-
5.	Pine Grove, Newhall	2 Dwellings	2 X 1 bed bungalows	-	-	-

Table 2 – New Build Sites and Dwelling Numbers
Page 41 of 51

4.2 Current Position

4.2.1 Following the successful procurement process and the post tender analysis, three viable sites have been progressed, as detailed in table 3 below.

4.2.2 The viable sites are:

Address	Contractors	Start Date	Completion Date
Lullington Road, Overseal (12nr)	Robert Woodhead	June 2015	March 2016
Coton Park, Linton (23 nr)	KeepMoat	March 2015	December 2016
Pennine Way, Swadlincote (10 nr)	Robert Woodhead	June 2015	March 2016

Table 3 – Awarded Contracts.

4.2.3 The fourth and fifth site at St. Catherine's Road, Newhall and Pine Grove, Newhall are considered not to be economical viable based on the submitted tenders and it is proposed to subject these two sites to further options appraisal, and report the findings back to this committee.

4.2.4 The Council has recently been successful in obtaining Homes and Community Agency Investment Partner status and a £190,000 grant from the Homes and Community Agency for Pennine Way. Being successful as an Investment Partner allows the Council to bid for future funding, which enables the Housing Services to successfully continue with its ambitious programme of new build development within South Derbyshire and providing affordable, modern and decent homes for its residents and prospective residents.

4.3 Replacement acquisitions

4.3.1 Two acquisitions have been completed with modernisation works currently being completed on the most recent acquisition in Midway, the other currently successfully rented. By including these two acquisitions the original aim to build and acquire 50 homes within the original budget should still be achievable, and the outturn reported to this committee.

4.4 Phase 2 New Build and Acquisition Programme

4.4.1 The Housing Asset Manager is preparing a programme for phase 2 new build and acquisition and will presenting the findings towards the end of phase one, early in 2016, to this committee.

5. Financial Implications

5.1 The report is not proposing any increases to previously approved expenditure.

6. Corporate Implications

6.1 The corporate implications of the report has direct relevancy on all four of the Council's corporate themes and specifically on a number of priorities contained within each theme.

7. Community Implications

- 7.1 The approved five year programme is delivering on tenant priorities of replacing old and outdated internal fittings/components and fixtures and undertaking environmental improvements. The programme also ensure that all stock meets the Decent Homes Standard. The New Build and Acquisition Programme increases the overall stock and provides high quality modern, energy efficient properties built to current standards.

8. Background Papers

None

REPORT TO:	HOUSING AND COMMUNITY SERVICES	AGENDA ITEM: 9
DATE OF MEETING:	16 APRIL 2015	CATEGORY: DELEGATED
REPORT FROM:	DIRECTOR OF COMMUNITY AND PLANNING SERVICES	OPEN
MEMBERS' CONTACT POINT:	IAN HEY ext 8741	DOC:
SUBJECT:	COMMUNITY PARTNERSHIPS SCHEME	REF:
WARD(S) AFFECTED:	ALL	TERMS OF REFERENCE: HCS07

1.0 Recommendations

1.1 That Members consider the recommendation of the Community Partnerships Scheme Assessment Panel and award grants of:

- £15,600 to 107th Aston Scouts – Grant to contribute to a replacement mini-bus that is used by 5 sections of this organisation. Improved economy from the new vehicle will enable the group to maintain levels of activity as the numbers of members increase.
- £19,890 to South Derbyshire Citizens Advice Bureau – Grant towards the costs associated with extending the building to house additional volunteer advice workers. This will have a direct impact on the availability of advice for residents in South Derbyshire
- £12,500 to Egginton Parish Council – Grant towards a project that will engage the community in providing improvements to community spaces within the village.
- £7,279 to Etwall George V Playing Field Charity – Grant towards the installation of play equipment for teenagers from within the community.
- £11,550 to Friends of Newhall Park – Grant towards a community based project that will improve the area around the War Memorial gates, improving both the appearance and usability of the area.

- £4,834 to Gresley PCC (Gresley Church Hall) – Grant towards the reconfiguration of the storage area of the hall to provide office and meeting area to act as a base to support voluntary activity in the parish.
- £25,000 to Overseal Parish Council – Grant to contribute to major improvement works of the village recreation ground. This phase of the project will see improvements to grass pitches on the site that will include re-grading, drainage, cultivation, embankment and marking pitches to be suitable for both adult and junior football. It will also include improvements to other grass areas on the site which can be used for training, multi sports and junior cricket, with a long term aspiration for an artificial cricket wicket on site.
- £4,200 to Rosliston Village Hall – Grant to support the investment in energy efficiency technologies that will reduce costs to the hall leading to increased sustainability.
- £8,000 to Ticknall Church – Grant to support the cost of installing toilet facilities within the building. This in turn will enable increased use of the church facilities by the community for a range of community based activities.
- £7,000 to Ticknall Cricket Club – Grant to support the improvement and extension of practice facilities that will improve safety and increase usage.
- £15,000 to Willington Church - Grant to support the cost of installing toilet facilities and improving kitchen facilities to increase the capacity of the building to be used by the local community for a range of activities.

2.0 Purpose of Report

2.1 To update members on applications for funding received by the Community Partnerships Scheme and seek approval for recommendations from the assessment panel in relation to the scheme.

3.0 Executive Summary

3.1 The Community Partnerships Scheme is continuing to operate according to processes and procedures as previously agreed and reported to Committee.

3.2 Capital Grants – In total 13 applications were received asking for £148,975 against a budget of £300,000.

3.3 11 applications have been recommended for grant support. Two applications have been deferred to enable additional information to be obtained.

4.0 Detail

4.1 The Community Partnership Scheme offers capital grants of up to £25,000 to projects brought forward from the voluntary and community sector. £300,000 has been allocated to the scheme to enable grants to be made in support of applications received during 2014/15 and 2015/16.

4.2 A panel comprising five Councillors, with advice from the Community Partnership Officer, assess projects against set criteria and then make recommendations about grant distribution to the Committee.

4.3 The following applications were received and considered for capital funding:

107th Aston Scouts

Application for £15,600. The organisation supports 5 different groups drawing membership from Aston on Trent and the surrounding communities. As well as activities based in Aston the group aims to deliver a wide range of activities at differing locations to support the physical and mental development of young people. Ownership of their own mini-bus has been central to minimising costs to the young people. The current mini-bus is aging and requires increasing spend to retain it on the road. The application is to support the purchase of a new vehicle that will be reliable and reduce ongoing costs helping to maintain the sustainability of the group activity.

The group has raised half of the cost through their own fundraising activities.

SD Citizens Advice Bureau

Application for £19,890. SD CAB have seen an increase in the numbers that are using their services. The organisation is currently working at capacity in the premises that they occupy. In order to increase the services that they offer for residents of South Derbyshire they intend to extend the building to enable them to house additional volunteer advisors. This will also enable them to increase the range of services offered to include IT literacy and money management skills as well as increasing the capacity of current services.

The organisation has been working with the Community Partnership Officer and has submitted applications for funds to match the capital costs and to cover revenue costs of setting up the new services.

Egginton Parish Council

Application for £12,500. Egginton Parish Council is working with a number of community groups within the village to develop the Egginton Gateway Community Project. This will deliver a number of community based projects that will improve the appearances of the entrances to the village following extensive flood alleviation works including landscaping, new village signs and improvements to the appearance of the Egginton Brook Bridge.

Additional funds for the project have already been secured towards the project from the Environment Agency / Toyota (£5,000), Seven Trent Water (£3,000), Safer Partnership Fund (£750), Rolls Royce (£200), Diamond Jubilee Committee (£1,000) and the Parish Council (£2,550)

Etwall George V Playing Field

Application for £7,279. The Etwall George V Playing Field Charity has consulted local children and plan to install play equipment for older children. There is no provision currently within the village for this age group.

Etwell Parish Council has agreed to match this grant with a grant of their own for £7,279. An additional application is being submitted to Biffaward to extend the project

Friends of Newhall Park

Application for £11,550 The Friends of Newhall Park aim to undertake a project that will improve the appearance and infrastructure at a main entrance and in a very visible location adjacent to Main Street, Newhall. The proposals are also designed to make provision for the War Memorial Gate to be used for an Act of Remembrance on Remembrance Sunday, with the area in front of the gates becoming a stage and the semi-circle and adjacent path becoming an area for organisations (Rainbows, Badgers, Brownies, Cubs, Guides, Scouts and British Legion etc.) to parade and stand. These will also create a pleasant and active location for people to sit, overlooking the bowling green and other activities.

A wide range of local organisations and businesses have committed funds and time to this project. To date £7,550 has been secured and an additional £4,000 has been identified and is awaiting confirmation.

Gresley PCC (Gresley Church Hall)

Application for £4,834. Gresley PCC (Gresley Church Hall) intends to redevelop internal space that is currently not used to its full potential to create office space and rearranged storage space. This will enable them to develop a capacity building service working with a number of voluntary groups in Church Gresley to help them to establish and grow.

Matched funds (capital £4,834 and revenue £5,000) have already been identified from their own funds.

Overseal Parish Council

Application for £25,000. Overseal Parish Council has developed a project that aims to improve facilities on the village Recreation Ground. The work will improve drainage and level grass pitches, improve disability access to facilities, storage, enlargement of the existing MUGA, the provision of fitness equipment and the relocation of a teen shelter. This project is part of a larger master-plan for the site which will be completed over a number of years due to the cost involved.

Specifically this phase of the project will see improvements to grass pitches on the site that will include re-grading, drainage, cultivation, embankment and marking pitches to be suitable for both adult and junior football. It will also include improvements to other grass areas on the site which can be used for training, multi sports and junior cricket, with a long term aspiration for an artificial cricket wicket on site.

The site plan also includes the development of teen fitness equipment to increase informal fitness provision and also the ability to link to South Derbyshire District Council bootcamp activities.

An application has been submitted to Sport England – Protecting Playing Fields Grants for £65,000 towards this project.

Rosliston Village Hall

Application for £4,200. Rosliston Village Hall aim to reduce ongoing running costs through the installation of solar panels and replacing all internal lights with LED lighting. This in turn will contribute towards the overall sustainability of the hall.

The South Derbyshire Forum (Swadlincote 50+ Forum)

Application £8,319. The forum submitted an application towards the cost of refurbishing/repairing the kitchen facilities of “The Bus Park Café”. The facilities are central to the development of the meals on wheels service that they operate.

Ticknall Church

Application for £8,000. Ticknall Church does not currently have any internal toilet facilities. The proposed project is to install a toilet with full disabled access inside the building. A new meeting space has already been developed and the installation of a toilet will make the facility more attractive as a venue for local community groups to use.

£5,000 has been secured from the Garfield Weston Foundation and £1,000 from the Allchurches Trust towards this project. £2,000 has also been secured from their building reserve fund.

Ticknall Cricket Club

Application for £7,000. Ticknall Cricket Club are seeking a grant to support the improvement and extension of practice facilities that will improve safety and increase usage. The existing facilities are inadequate to increase the level of use that they have. The site has been identified by Derbyshire County Cricket as a development site for young players and this project will help maintain this development.

The club has already secured £7,000 through its fundraising activities.

Trident Reach – Oaklands Village

Application for £9,802. Trident Reach are developing a “Step Up Gym” that will enable residents of Oaklands and members of the local elderly community to access health equipment and services which improve balance, strengthen the musculoskeletal system reducing the need to rely on health services. They will install disability-friendly gym equipment in an under-used room at Oaklands Village, allowing open access and specialist training from physiotherapy trainers in the local area.

Applications have already been made to the Helen Cope Charitable Trust (£8,150) and Sport England small grants (£9,802).

Willington Church

Application for £15,000. Willington Church does not currently have internal toilet or adequate kitchen facilities. This project will lead to the installation toilet facilities and improving kitchen facilities to increase the capacity of the building to be used by the

local community for a range of activities. There will also be an area where the pews are removed to make a more flexible area for the same activities.

The church has already secured £10,041 towards this project and this is held in their building funds. Applications for additional funding have been submitted to CEMEX, Willington Parish Council and the Central England Co-operative Community Dividend Fund.

- 4.4 The Community Partnership Scheme Assessment Panel met on 11th March 2015 to score the applications against the questions and weightings previously agreed. The weighted criteria include links with corporate priorities, security of external funding, sustainability, value of other contributions, value for money, community involvement, risk and commitment to equal opportunities.

Once the weightings had been applied the final score of the projects was as follows:

107th Aston Scouts	7.1
South Derbyshire Citizens Advice Bureau	10
Egginton Parish Council	7.67
Etwell George V Playing Field	7.0
Friends of Newhall Park	5.67
Gresley PCC (Gresley Church Hall)	9.0
Overseal Parish	8.0
Rosliston Village Hall	6.67
The South Derbyshire Forum (Swadlincote 50+ Forum)	Deferred
Ticknall Church	6.17
Ticknall Cricket Club	7.5
Trident Reach – Oaklands Village	Deferred
Willington Church	6.17

For capital grants the point previously used, as a cut off in terms of making positive recommendations to committee was 4.67. The value of applications falling above this point is covered by the monies remaining within the scheme.

Two applications, South Derbyshire Forum and Trident Reach were deferred by the panel so that additional information could be secured to enable the applications to be considered at a later panel.

- 4.5 Prior to making a recommendation the panel considered the scheme's current budget position re capital monies. The scheme has £300,000 budgeted prior to the allocation of any grants.
- 4.6 In light of the above information it was clear that there was sufficient funding to recommend grants to all eligible applicants that scored sufficiently highly. The panel's recommendation for distribution of grant was therefore as follows:
- £15,600 to 107th Aston Scouts.
 - £19,890 to South Derbyshire Citizens Advice Bureau.

- £12,500 to Egginton Parish Council.
- £7,279 to Etwall George V Playing Field Charity. - Grant offer is to be made on the condition that it is a match for the Parish Council contribution, any success with an application for Biffaward funding to increase the provision on the site.
- £11,550 to Friends of Newhall Park.
- £4,834 to Gresley PCC (Gresley Church Hall).
- £25,000 to Overseal Parish Council.
- £4,200 to Rosliston Village Hall.
- £8,000 to Ticknall Church.
- £7,000 to Ticknall Cricket Club.
- £15,000 to Willington Church.

All grant offers for building based projects are required to evidence appropriate planning / building control permissions

5.0 Financial Implications

5.1.1 The award of grants falls within the Community Partnerships budget allocation of £300,000. The total of the grants recommended for award is £130,853 leaving £169,147 to be carried forward to future grant panels.

6.0 Corporate Implications

6.1 The scheme contributes to a number of the Council's strategic objectives including enhancing the quality of life of all South Derbyshire Residents; safeguarding and enhancing a sustainable environment; putting residents at the centre of council decision making and creating a climate for good inward investment. In addition each individual project's impact on corporate priorities is assessed as part of the appraisal process.

7.0 Community Implications

7.1 The scheme maximises funding available for community investment by providing both direct funding and enabling leverage from other funding sources. It also continues to offer a direct line of communication with the voluntary and community sector.

7.2 The impact on the community and amount of community involvement in each individual project has been assessed as part of the appraisal process.

8.0 Conclusions

8.1 The Community Partnerships Scheme continues to provide the District Council with an excellent means to support a variety of community partners in improving the quality of life for local residents. It also enables the community partners to lever in additional external funding to the district.

9.0 Background Papers

9.1 File: [Community Partnership Grant Panel meeting 11/03/2015](#)