



**SOUTH DERBYSHIRE
PARTNERSHIP**

**Mike Roylance
Head of Economic Development
and Growth**

South Derbyshire District Council
Civic Offices, Civic Way,
Swadlincote, Derbyshire, DE11 0AH.

Please ask for Sally Cope
Tel: (01283) 221000 Ext. 5791
DDI: (01283) 595791
Email: sally.cope@southderbyshire.gov.uk
www.southderbyshire.gov.uk

13 October 2022

Dear Sir/Madam

BOARD MEETING

A Board Meeting of the South Derbyshire Partnership will be held virtually via Microsoft Teams on Wednesday 19th October 2022 at 10:00 am.

You are requested to attend.

Yours faithfully



**Mike Roylance
Head of Economic Development & Growth**



Voting Members of the Board:

Local Authority Sector

District Councillor Kevin Richards (South Derbyshire District Council) (Chairman)
Cllr Stephanie Marbrow (Derbyshire Association of Local Councils)
Councillor Amy Wheelton (South Derbyshire District Council)
Vacant (Strategic Director – Service Delivery) (South Derbyshire District Council)
District Councillor Trevor Southerd (South Derbyshire District Council)
Councillor David Muller (Derbyshire County Council)

Other Public Sector

Dave Beris (Derbyshire County Council – Children’s Services)
Steve Hall (The Pingle Academy)
Communities Chief Inspector Chris Thornhill (Derbyshire Constabulary)
Vicky Smyth (Derbyshire County Council – Public Health)
John Beaty (Burton & South Derbyshire College)
Tina Brown (NHS Derby and Derbyshire Clinical Commissioning Group)

Private Sector

Julie Langley (Toyota UK Ltd)
Colleen Hempson (East Midlands Airport)
Louise Driver | John Everitt (The National Forest Company)
Kim Coe | Rob Coe (Swadlincote & District Chamber of Trade)
Chris Beech (Sharpe’s Pottery Heritage and Arts Trust)
Vacant

Voluntary/Community Sector

Sally Eccles (Home Start Derby & South Derbyshire)
Roger Moors (CEO South Derbyshire CVS)
Dr Claire Teeling (Grow Outside C.I.C.)
Matt Buckler (Derbyshire Wildlife Trust)
Revd Dr Mike Firbank (Churches Together in Swadlincote)
Vacant



Agenda

Time and Date 10am, Wednesday 19 October 2022

Venue Virtual

Item	Description	
1	Introductions, apologies and to note any substitutes appointed for the Meeting.	10:00am
2	Declarations of Interest.	
3	To receive the Minutes of the Meeting held on 28 June 2022 (Attached).	
4	Matters Arising.	
5	South Derbyshire Youth Forum (Carli Colley)	10.10am
6	Heart of the Forest Masterplan (Louise Driver)	10.25am
7	Theme Updates: <ul style="list-style-type: none"> • Healthier Communities (Vicky Smyth). • Children and Young People (Dave Beris). • Safer Communities (Sgt Tarj Nizzer). • Stronger Communities (Roger Moors). • Sustainable Development (Mike Roylance). Incorporating Sustainable Community Strategy Action Plan updates - Appendix 1 (Report attached).	10:40am
8	Budget Update Including consideration of South Derbyshire Environmental Forum and Rosliston Rangers Grant Application.	11:25am
9	Feedback and Future Agenda Items.	11:30am
	Date of Next Meeting: Wednesday 15 FEBRUARY 2023 - 10:00am	Finish





BOARD MEETING – 28 JUNE 2022

SDP/65. PRESENT

Local Authority Sector

County Councillor David Muller (Derbyshire County Council), Councillor Lisa Brown, Councillor Amy Wheelton and Councillor Robert Pearson (South Derbyshire District Council), Councillor Stephanie Marbrow (DALC).

Other Public Sector

Dave Beris (Derbyshire County Council – Children’s Services), Lois Race (Derbyshire County Council – Public Health).

Private Sector

Julie Langley (Toyota Motor Manufacturing UK Ltd), Colleen Hempson (East Midlands Airport), Louise Driver (National Forest Company), Chris Beech (Sharpe’s Pottery & Heritage and Arts Trust), John Beaty (Burton and South Derbyshire College).

Voluntary/Community Sector

Roger Moors (South Derbyshire CVS) – Vice Chair.

Also in Attendance

Mike Roylance, Matt Holford, Chris Smith, Sally Cope and Christopher Pegg (Work Experience) (South Derbyshire District Council), Sergeant Ben Wildman (Derbyshire Constabulary) and Observing - Hollie Benton (South Derbyshire CVS).

SDP/66. APOLOGIES

Apologies for absence from the Meeting were received from:

Councillor Kevin Richards (Chairman) (SDDC)

Councillor Trevor Southerd (SDDC)

Allison Thomas (SDDC)

Vicky Smyth and Sam Elks (Derbyshire County Council – Public Health)

Revd Mike Firbank (Churches Together in Swadlincote)

Inspector Michael Sisman (Derbyshire Constabulary)

Tina Brown and Maggie Palmer (NHS Derby and Derbyshire Clinical Commissioning Group)

John Everitt (The National Forest Company)

SDP/67. INTRODUCTIONS, APOLOGIES, SUBSTITUTES

In the absence of Councillor Richards the Vice Chair of the SDP, Roger Moors, chaired the meeting. Welcome and Introductions took place.

Councillor Amy Wheelton confirmed that she is now a Board Member.

Substitutes | Representatives noted as follows:

Councillor Kevin Richards - Roger Moors (as Chair)
Councillor Trevor Southerd – Councillor Robert Pearson
Inspector Michael Sisman – Sergeant Ben Wildman
Vicky Smyth – Lois Race

Observers at the meeting welcomes: Councillor Amy Wheelton (now a Board member), Christopher Pegg and Hollie Benton.

This would have been Allison Thomas's last SDP meeting and, on behalf of the Partnership, the Vice Chair wished to say a big thank you for her contribution and all her work throughout a very difficult period over the last two years and to wish her all the best for the future.

Apologies noted.

SDP/68. DECLARATION OF INTEREST

Declarations of interest were noted from:

Councillor Amy Wheelton as follows: Covid Connector; Connect South Derbyshire Steering Group; and, Rural Action Derbyshire Trustee (as per District Councillor interests).

SDP/69. MINUTES OF MEETING

The Minutes of the Meeting held on 9 February 2022 were taken as read and approved as a true record.

SDP/70. MATTERS ARISING

No matters arising.

SDP/71. CLIMATE AND ENVIRONMENT ACTION PLAN

Matt Holford provided an overview of the District Council's Climate and Environment Action Plan and its implementation.

The Council declared a Climate Emergency in June 2019, in which it committed to:

- Strive to make all South Derbyshire District Council owned activities carbon neutral by 2030 and achieve carbon neutrality across South Derbyshire before the Government target of 2050.
- Call on the UK Government to provide the powers and resources to make the 2030 target realistic.
- Work with partners across the District and region to deliver this goal through all relevant strategies.

It has now been established that the Council's activities directly emit approx. 2,500 tonnes of CO2 per year.

Timeline:

- Jan 2020 - First Action Plan with 32 proposed actions. No defined roadmap to net zero.
- May 2021 – Published Second Action Plan with 55 proposed actions fully costed and defined roadmap to net zero.
- Aug 2022 - Third Action Plan going forward.

An illustration was shown of where the Council needs to get to in order to achieve its ambition - a significant and substantial change in activities needs to be delivered over the next 8 years.

An overview of the existing Action Plan highlighted the main carbon emitters within South Derbyshire: (1) Transport emissions (2) Industry/commercial activities, and (3) Domestic energy emissions.

Progress to date in implementing the Second Action Plan has seen 16% of actions completed, 46% of actions in progress, and 38% of actions not started. The Third Action Plan is due to be published in August. The example of optimisation of refuse collection routes to save fuel was touched upon, with small changes all contributing.

A question was put to the Board Members to help inform the next Action Plan: As key stakeholders, what do you think the Council's role should be? Any feedback to Matt Holford: matt.holford@southderbyshire.gov.uk

It was highlighted that private sector rental properties to be at least EPC(C) rated by 2025 is not currently a statutory requirement, with a Government announcement awaited. If the opportunity arises the Council will assist and regulate the private sector and landlords to be compliant. Private landlords and owner occupiers who wish to improve their EPC rating are eligible for assistance.

Stephanie Marbrow (DALC representative) asked whether any information had been passed onto Parish Councils? Information had been communicated to parishes last year seeking any nominees who wanted to get involved in activities by a company called Marches Energy, a carbon reduction educator. **ACTION:** MH to request Marches communicate with Parishes with the aim of using their regular newsletters to engage with local residents.

ACTION: Louise Driver invited Matt Holford to meet to discuss how the NFC can support the capture of the wider tree planting, biodiversity enhancement etc that is happening in the District - and opportunities for accelerating this.

The Vice-Chair's added that the role of education and information across the District should be a key priority, helping to get messages out widely.

SDP/72. UKRAINE RESPONSE (Matt Holford)

An update had been requested on the 'Homes for Ukraine' scheme, with details provided by the District Council. Some 5 million Ukrainians have left their country and are deemed as refugees.

Two schemes are operating:

- (1) Ukraine Family Scheme – for those who have extended family in the UK.
- (2) Homes for Ukraine – an opportunity for willing sponsors in the UK to provide a home, rent free for a period of at least 6 months, where refugees can live and work in the UK for a period of 3 years and have access to healthcare, welfare, and schools.

To facilitate the settlement of Ukraine guests with their UK sponsors, the local authorities role is to provide safeguarding checks of sponsors and to ensure that their home environment is safe for the proposed Ukraine guests.

Derbyshire has received 345 guests (not including Derby City), notably to the more affluent areas of Derbyshire. South Derbyshire currently has 41 active sponsors who have received their guests. Now that the guests have arrived, follow-up visits to understand their future welfare needs are being undertaken.

ACTION: Any members who are aware of events that will help to get the Ukraine families together, to communicate these to the District Council and Parish Councils.

SDP/73 FINANCIAL INCLUSION GROUP

Lois Race, on behalf of the Partnership's Financial Inclusion Group (in the absence of Vicky Smyth), presented a report on the cost-of-living pressures, including an overview of key information relating to the cost of living, significant public health concerns and priorities, and an update on the work taking place. The Public Health team are currently reviewing data to help understand who is going to be most significantly affected. Locally, SDCVS has reported a significant increase in demand for emergency food, 115% more meals or 104% more parcels, which coincides with withdrawal of the Universal Credit uplift (withdrawn 2021). Derbyshire Universal Credit claimants have significantly increased (a similar pattern is found in South Derbyshire), with the most deprived areas having the highest number of Universal Credit claims. Members were reminded that Universal Credit is not just for people out of work but also support for those on a low income.

The South Derbyshire Financial Inclusion Group is a multi-agency steering group providing a forum to share intelligence, reduce duplication and identify gaps in provision and support local action planning and delivery. Identified priorities are debt reduction, income maximisation, housing, food security and digital connectivity.

The contact details of local support services have been sent to every household via the Council Tax billing.

Derbyshire County Council's Public Health and Communications Teams are working on a cost-of-living campaign, promoting sources of advice and support: www.derbyshire.gov/costofliving

The Communications Team is currently developing a toolkit of key messages and information for partners to cascade.

ACTION: Questions for the Board to consider and feedback to Vicky Smyth:

- (a) Are there any specific concerns for our area or any emerging issues not identified by the Financial Inclusion Group?
- (b) Where are there gaps in provision in South Derbyshire?

(c) What is the impact that cost of living pressures is having on services?

(d) How can we best support residents?

(e) Where should additional activity or resources be focussed?

Feedback to: vicky.smyth@derbyshire.gov.uk

Presentation to be shared following the meeting – if you require a follow up please contact either Vicky Smyth or Lois Race. **ACTION:** SC - circulate presentation slides.

SDP/74. THEME UPDATE

Theme Group Leads provided an overview of their update reports, including:

Healthier Communities

Community gardening project – the Group is identifying areas of land with the intention that multiple agencies could use the land to benefit a variety of different service users - Recovering by Nature. Any partner wishing to be involved in the Project to contact Lee English:

lee.english@southderbyshire.gov.uk

A possible piece of ground at Rosliston was highlighted and Lee's details passed to Stephanie.

Safer Communities

Current priority is 'safer spaces', and a subgroup has been set up to identify locations where children and young people could hang out at night and to try to ensure they are as safe as they can be. Any partners who wish to be involved in the Group to contact Chris Smith:

chris.smith@southderbyshire.gov.uk

Sergeant Ben Wildman informed the members of a force-wide operation that he is currently involved in 'Operation Bayonet' - intelligence information sharing on knife crime with local education establishments, aiming to raise awareness of issues affecting their pupils.

Six public Area Forums have gone back to face to face. These are attended by the Police, Local Authority and CVS. Anyone wishing to attend with initiatives or projects they wish to promote, please contact Chris Smith.

Sustainable Development

The National Forest Company's Heart of the Forest Masterplan consultation is currently being analysed, and more information will be provided to a future meeting. The Ivanhoe Line has been selected to progress to Full Business Case, which is potentially significant for connectivity in Swadlincote and surrounding areas.

SDP/75. BUDGET UPDATE

The Board agreed:

- (a) To provide funding of £1,500 for the Work Club project (Old Post Regeneration Association), matching that provided by Derbyshire County Council (Public Health).
- (b) To invite requests for funding for new projects that will contribute to the achievement of the Partnership's aims.

SDP/76. FEEDBACK, FUTURE AGENDA ITEMS AND DATE OF NEXT MEETING

Future Agenda Items suggested as:

- Feedback on the Heart of the Forest Masterplan
- Climate change and flooding
- Green social prescribing pilot across Derbyshire

Members can also email any future items to:

economic.development@southderbyshire.gov.uk

The date of the next meeting will be 19 October 2022.

The Vice Chair thanked everyone for participating and closed the meeting at 11:54 am.



Agenda Report to the Board

Item 7. THEME GROUP UPDATES: QUARTER 1 (April – June) QUARTER 2 (July – Sept 2022)

1.0 Purpose of Report

1.1 To inform the Board on the Theme Groups work to date.

2.0 Detail

2.1 Performance reports for each of the Theme Groups are attached as Appendix A. These provide a summary of progress against priorities in the Sustainable Community Strategy, note issues that the Partnership could add value to, and highlight any action required of partners such as attendance at or promotion of an event.

Contact: Mike Roylance, South Derbyshire District Council
Tel. (01283) 595725
Email. mike.roylance@southderbyshire.gov.uk

THEME GROUP: HEALTHIER COMMUNITIES

Highlight summary of progress against priorities in the Sustainable Communities Strategy.

Connect South Derbyshire

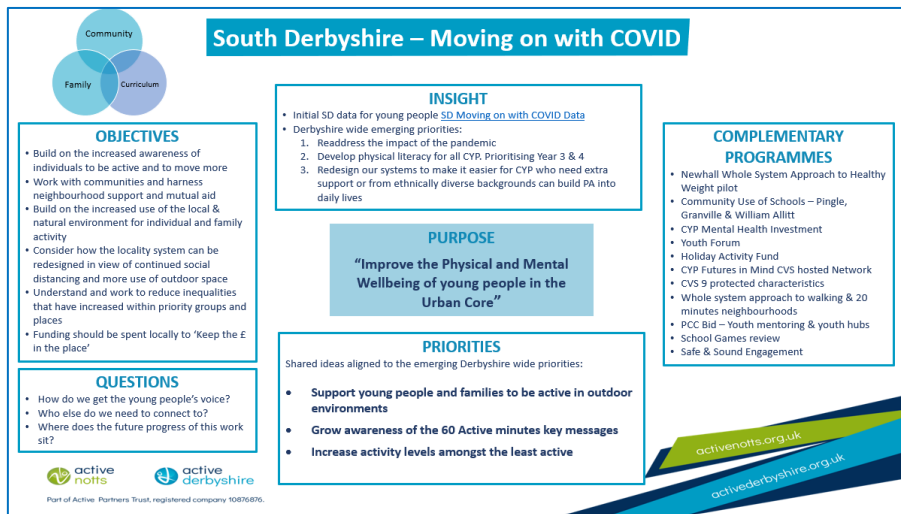
South Derbyshire CVS are co-ordinating the local approach to the Connect South Derbyshire project which has been delivered over the course of this year. Three community networks comprising of 37 actively engaged community members, have been established in Hilton, Etwall and Church Broughton, and Hatton. These networks encompass residents, community group members, community group leaders and faith group leaders who all have an interest in their local area. South Derbyshire CVS facilitate and support the networks to explore what is important to them and any actions that they would like to take, with the aim of reducing social isolation and loneliness. Activities that have taken place as a result of these networks include a dementia friendly event held in Hilton, a monthly community café in Etwall and a board game evening in Hatton for new families in the area. The network in Hilton is exploring the possibility of starting a coffee morning in a community room with the support of SDDC Housing Team.

One of the challenges that has been highlighted is that some community members are finding it difficult to return to normal activities since the pandemic due to a loss in confidence. As a result, the steering group has created a resource document for community groups to use to support to create a welcoming space for new and existing group members.

A further investment of £25,000 from Public Health has been approved to support ongoing development.

For more information, please contact [Samantha Elks](#).

Being Active in the Outdoors



Partners from Children's Services, Joined Up Care Derbyshire, South Derbyshire District Council, Public Health and South Derbyshire CVS have come together to address the increasing levels of inactivity among children and young people. The priority area for the group is to 'support young people and families to be active in outdoor environments.' To understand this further the group have commissioned Sustrans to engage with the community. Supported by the steering group, Sustrans have carried out community engagement through parent and carer surveys, pop up events which have taken place alongside the summer playscheme sessions and resident focus groups. A full report of findings will be shared when available.

For more information, please contact [Lee English](#).

South Derbyshire Place Alliance Group

The Primary Care Network (PCN) has taken steps to become 'incorporated' and welcomed several individuals into Leadership roles new to them. They have been busy setting up new structures to gain feedback and input from Patients into the PCN, which is made up of 5 GPs surgeries in the Swadlincote area. Much more information can be found on the JUCD website.

Throughout the summer quarter, members of the Place Alliance worked on developing webpages for the new [Integrated Care System website](#). Attendees received a presentation from the Vaccines Operations Cell about the splendid response in South Derbyshire and how to build on that for the coming winter with 4 sites now announced for Covid and Flu jabs:

Good Life Pharmacy (Jubilee Hall)
Newhall Pharmacy
Oakland Village and Community Care Centre
Queen's Hospital Burton (UHDB)

The Derby and Derbyshire Clinical Commissioning Group (CCG) became part of the new Integrated Care System body in the early summer and some of the mechanisms in place have changed slightly. However, all members of the Alliance; Public Health, Voluntary Sector, NHS, Mental Health, SDDC and our Community Lay Representatives and others, remain focussed on addressing health inequalities and delivering good services to the people of the area.

For further information please contact maggie.palmer1@nhs.net

THEME GROUP: CHILDREN & YOUNG PEOPLE

Highlight summary of progress against priorities in the Sustainable Communities Strategy.

Children Services Updates South Derbyshire Report - 27 September 2022

During September there has been an OSTED focused visit to Children Services. The focus was upon Children Protection and Children in Need and a number of cases were reviewed by the inspectors and discussions took place with Social Work Staff. A detailed report will be received within a month but the general feedback from the inspectors was positive in terms of staff professionalism and commitment to children and families. It is envisaged that a large-scale inspection will take place in 6 months' time of the whole of children services and partner agencies will be included.

Children Services staff have returned to the offices on a rota system and line with new ways of working, and home visits and contacts with vulnerable children and families have remained a key aspect of the role during lock down and post lock down.

South Derbyshire and Dales Children Services Key Data 27 September 2022 no. of children who/on:

Children in Care	116
Child Protection Plan	87
Children in Need	437
Early Help Services	173

Group work Activities:

- Parenting Support Groups
- Children Centre Groups
- Youth Groups – delivery in local schools and detached work with partner agencies.

Children Services currently have 4 buildings open with Covid Health and Safety measures in place:

- Rink House – Staff
- Elms – Staff and Families
- Woodville Children Centre – Staff
- Etwall – Staff and Families

There is currently a drive for all staff to assist with the financial inclusion agenda and particularly so with the cost of living increasing and impacting all families. There is currently an examination of what rooms can be made available to assist families access warm Council buildings during the winter period. There is strong partnership within schools and across all agencies in supporting the needs of children and families.

South Derbyshire and Dales Children Partnership priorities for 2022/23 are:

- Supporting young people improve oral health
- Providing Safe areas of young people – response to knife crime and surveys
- Inclusion of Young People within decision making.

This partnership meets every two months and there is a good representation amongst all agencies and working groups provide updates in relation to these priorities and emerging concerns.

Staff retention remains an issue amongst Social Work teams and there are various measures planned to increase retention within this sector.

THEME GROUP: SAFER COMMUNITIES

Highlight summary of progress against priorities in the Sustainable Communities Strategy.

Liberation Day 2022

Liberation Day took place on Wednesday 18 May, over 350 people aged 60+ attended and were treated to great weather, 'big band' music, afternoon tea and cake, advice and information stalls and guest speakers including Police Inspector Mike Sisman and the Lord-Lieutenant of Derbyshire. The event was a great success.

Area Forums

Face to Face Area Forum meetings have now recommenced after holding them virtually during the pandemic. Meetings took place in June and July and another round of meetings is currently taking place. All meetings will start at 6.30pm, the remaining meetings in this round are as follows:

Area	Day	Date	Venue
Etwall	Thursday	13th October	Foston & Scropton VH
Repton	Tuesday	11th October	Stenson Comm. Centre (Tues-Only)
Melbourne	Wednesday	9th November	Aston Recreation Centre
Swadlincote	Wednesday	2nd November	St Geroges & St Marys Church - Church Gresley
Newhall	Tuesday	8th Nov	St Johns Church - Newhall
Linton	Wednesday	5th October	Lullington Village Hall

The meetings are a chance for members of public to hear from Police, Council Officers and Councillors and raise any issues and ask any questions they may have about their local area.

School Banners

X 30 road safety banners, also funded by the South Derbyshire Community Safety Partnership are being distributed to Schools across the District by local SNT Officers. Two different designs were purchased, one which state's 'DO NOT STOP ON THE ZIG ZAGS and another which states 'THINK BEFORE YOU PARK'.



Schools who have received the banners include Belmont Primary School and Newhall Infants; who took this photo and tweeted their appreciation!

Swadlincote Pub Watch

The Swadlincote Pub watch meeting continues to thrive, in May x 16 pubs were in attendance. A presentation was given by the Licensed Trade Charity (LTC) and the Police provided an update on Fake ID's. During the meeting two, three year Banning Orders were agreed to by members of the scheme in relation to two separate incidents involving females that had assaulted bar staff. In September x 16 pubs were again represented and a further individual received a three-year ban for assaulting a member of staff. The police also warned premises to be wary of fake £20 notes and pubs were offered UV scanners to help them detect the fakes.

ASB Awareness Week

July 18th marked the start of ASB Awareness Week which was promoted by the South Derbyshire Community Safety Partnership (SDCSP) at Swadlincote Fire Station Open Day on Saturday, July 16, 2022. SDDC held a stand at the Open Day (just prior to the beginning of ASB Awareness Week) to help promote ASB Awareness Week and other services. Other partners in attendance at the event were South Derbyshire CVS, promoting the Safer Homes and Handy Person Help at Home Schemes and the local Police Safer Neighbourhood Team (and the Fire Service of course!). ASB Awareness Packs were provided to anyone residing in South Derbyshire, who were experiencing issues with ASB, and included an ASB incident diary log, information about what is/ isn't classed as ASB together with contact information for Core Victim Services.

School Parking!

Following reports of inconsiderate and potentially dangerous parking around schools at drop off and pick up times letters have been sent to schools in Police Area Six (Linton) for circulation amongst Parents and carers of children attending those schools, to think about where they park and the potential consequences of not parking considerately.

Hate Crime Awareness Week

Saturday 8th October through to Saturday 15th October marks 'Hate Crime Awareness Week'. The national week aims to encourage the authorities (Government, Police and Councils), key partners and communities affected by hate crime to work together to tackle local hate crime incidents across the UK.

For more information about Hate Crime, including types and how you can report hate crime you can visit www.nationalhcaw.uk and look out for updates via the SDCSP and SDDC Facebook pages. The Communities Team have contacted local schools and are encouraging them to support the Show Racism the Red Card campaign by wearing red and promoting the scheme on their social media channels.

Safer and Stronger Neighbourhoods Funding Stream

X 3 projects have received funding since April, Belmont Bowls Club received £500 towards security measures including security lighting, anti-climb paint and new locks. Repton Parish Council received £1410 towards a new lighting column which is to be installed on a dark public footpath to reduce the fear of crime and The Old Post Centre in Newhall have received £275 to add an additional CCTV camera to a blind spot location.

Funding is still available for local community groups, parish councils, clubs and associations and not for profit organisations. The aim of the funding is to give local groups and organisations the opportunity to develop projects to make their community feel safer and stronger and to enhance the local community. The maximum amount that can be applied for (per project) is £2,500 and applications will need to demonstrate how the project will impact on reducing or preventing crime and disorder / anti-social behaviour / support development of new community groups and projects.

For more details, please visit the Council Website www.southderbyshire.gov.uk or contact Debbie Punter in the Communities Team on 01283 595858 or email community.safety@southderbyshire.gov.uk.

Additional CCTV at Midway Community Centre

An additional CCTV Camera has been added to the centre following continued ASB, a group of young lads have succeeded in knocking off some of the large lettering on the front of the Centre with a football, have thrown stones at the building and been climbing on the roof. The police have also attended and have increased patrols around the site.

Eureka Park

No further issues at the park since the serious incident in August. Following close partnership work two of the key individuals are no longer living in the area and are being investigated for a number of offences. The police are regularly patrolling, and it remains a priority location.

Op Sceptre

The second Op Sceptre campaign of the year takes place between Monday 14th November 2022 and Sunday 20th November 2022.

Activities being planned for the week include:

- Schools-based interventions - The SNT is currently running a mini-Police scheme at Newhall Junior School. The anti-knife crime wrist bands will be given out.
- The SNT are fully engaged with local secondary schools and have completed knife crime talks with pupils previously. This year we will look at using the board game SHATTERED, with the local secondary schools. The anti-knife crime wrist bands will be given out.

- Public engagement events - Swadlincote SNT will book a stall at Swadlincote Market to engage with shoppers to pass out the anti-knife crime message. The anti-knife crime wrist bands will be given out.
- Test purchase operations - Test purchase operations have been used previously during OP Sceptre and highlighted several premises that sold knives to the child. An operation will be arranged during the week visiting shops within South Derbyshire reminding them of their responsibilities when selling knives.
- Safer Neighbourhood Teams (SNT) to raise awareness and encourage reporting in significant locations. The main locations are the parks within the Swadlincote conurbation, and the town centre. Officers from the SNT will conduct engagement patrols in the areas. We will also link in with Safe and Sound who visit the areas and engage with young people.
- Pavement Chalk messages - South Derbyshire was a pioneer for the use of the chalk messages which was received well in the community. We will continue to use these in local parks and extend to other locations such as outside retail premises and hot spot areas.

Granville School – Switch Up Production

All students in years 9, 10 and 11 have recently watched the Switch-up Theatre in education performance around knife crime. The new thought-provoking show and workshop programme focuses on the complex, interrelated issues of knife crime, gang violence and self-identity. The CSP were invited to attend and have agreed to part fund the performance in secondary schools in the future.

Any action required of Partners i.e. attendance or promotion of an event.

This year to support Hate Crime Awareness Week (w/c 08.10.22 – 15.10.22) we are asking partners to complete a 'pledge card' against Hate Crime using one of the attached frames (these can also be found by clicking on the below link).

<https://img1.wsimg.com/blobby/go/468149e8-a715-434a-bb5f-eea088ed661a/downloads/NationalHCAW%20Frames%202022.pdf?ver=1664276307563>

The idea is for organisations and local sports groups to use the cards and post images of their pledge via social media, using the #DerbyshireNoPlaceForHATE.

Your support with raising awareness around this week would be greatly appreciated. Please feel free to share on within your teams and other partners as appropriate.

THEME GROUP: STRONGER COMMUNITIES

Highlight summary of progress against priorities in the Sustainable Communities Strategy.

The South Derbyshire Stronger Communities Group has not functioned for the last twelve months and this position continues as many local groups and community organisations struggle to find the time for strategic representation not least because of the many other formats in which they may participate

- Place Alliance (linked to the Integrated Care System)
- VCSE Alliance (again linked to ICS and countywide)
- Thematic groups and Forums which they attend (e.g. Children & Young People)

In these challenging times, many groups and community organisations are willing to attend meetings where there may be access to opportunity but are less inclined to participate in strategic conversations.

Trustees and Senior managers of SDCVS, aware of this situation have decided to form a Task & Finish Group of Trustees and senior staff to develop a Community Engagement Group (CEP)

The idea is to create an engagement mechanism for Trustees/Staff to be able to listen and reflect on the ideas, concerns, needs and current issues within the communities we serve. This engagement might take place 3 or 4 times a year. The CEP would reflect more appropriately

- Our beneficiaries
- The make-up of the communities we serve
- Issues affecting who might be considered within the nine protected characteristics
 - age.
 - disability.
 - gender reassignment.
 - marriage and civil partnership.
 - pregnancy and maternity.
 - race.
 - religion or belief.
 - sex.
 - Sexual orientation

It's hoped that this approach will help feed provide the insights and feedback that SDCVS can then present to the Partnership which in turn will influence how funds are distributed in SD along with policy direction.

The T&F group will commence in November with engagement likely in the New Year.

SDCVS continues to undertake valuable research and in the period completed the Swadlincote Accessibility Survey



SDCVS
ACCESSIBILITY SURV

A report on Social Connectedness was published in the period



Social
Connectedness SD.

The report details how we have developed community networks within South Derbyshire encouraging local citizens to connect, engage, and socialise with the volunteers, groups and organisations providing social connection in their communities. So far, we have reached out in Hilton, Hatton and Etwall and our plan now is to focus on Findern in the coming months.

One mechanism for community engagement and insight is through the quarterly Area Forum meetings. Senior managers attended these forums and any feedback helps shape our thinking and feedback to the Partnership

- Linton
- Repton
- Etwall
- Swadlincote
- Newhall
- Melbourne

Over the last two and a half years SDCVS have engaged with the community through the Covid Connectors Network – we currently have 32 connectors around South Derbyshire who share information within their local communities digitally and non-digitally. During the pandemic the bulletins sent out were focused on Covid 19 but this has now changed to include more information around health and wellbeing and signposting to support services. We are now looking to completely rebrand to Community Connectors.



RECOGNISED
**COMMUNITY
CONNECTOR**
SOUTH DERBYSHIRE CVS

The network will:

- Provide Health & Wellbeing updates (and Cost of Living support)
- Network meetings with guest speakers so each event has a real draw. Every event will be advertised on Eventbrite and accessible to anybody who wants to come.



Community
Connectors Proposa

We work alongside Public Health to administer the South Derbyshire Small Grants funding pot. During the period we have supported 2 successful applications. A further panel sits in November with 6 pending applications.

Issues that the Partnership to note.

During the period

SDCVS have:

- a. Sold and moved out of their old premises (46/48 Grove Street)
- b. Taken over the services of **South Derbyshire Mental Health Association** (including the transfer of three mental health practitioners)
- c. Moved (and in the process of refurbishing) new premises (the former home of SDMHA – Bankhouse) – the venue will be called ‘The Hive’
- d. The Foodbank has been relocated to The Hive and expanded threefold to provide more capacity and access.
- e. SDCVS are now working closely with CAB to provide wrap around support (RAFT – Reassurance Advice Food Together) commences from 1st November 2022 from the venue
- f. The Hive will also become a significant training venue for South Derbyshire as we equip the building with the infrastructure to deliver training and development courses for our members and beneficiaries.
- g. CVS have secured the DCC county wide ‘Time Swap’ contract (includes South Derbyshire) which will provide significant opportunities for both District/County communities to benefit from small acts of volunteering to support individuals and communities. The contract also includes development of Corporate Volunteering Time Swap

THEME GROUP: SUSTAINABLE DEVELOPMENT

Highlight summary of progress against priorities in the Sustainable Communities Strategy.

Unemployment

South Derbyshire local authority area (Claimant Count).

Aug 21	Jun 22	Jul 22	Aug 22	Change on month	Change on year	GB Aug 22
2.9%	2.0%	2.0%	2.0%	0%	-0.9%	3.7%
2,015	1,400	1,395	1,395		-620	

There are currently over 1,441 jobs available within a ten-mile radius of Swadlincote (DWP Find a Job).

South Derbyshire Business Advice Service

The South Derbyshire Business Advice Service has delivered 69 advice sessions in the first quarter and 73 in the second quarter of 2022/23, including both new starts and established businesses.

<https://twitter.com/SDerbysBAS>

Young entrepreneurs from The William Allitt School were given the chance to run their own market stalls, as Swadlincote Market took part in this year's national 'Love Your Local Market' celebrations. The pupils were helped to develop their business ideas by the South Derbyshire Business Advice Service and donated their profits to the CVS Food Bank.

<https://www.facebook.com/SwadlincoteMarkets/>

Thinking of Starting a Business? workshops for local residents interested in becoming self-employed have been staged, with the most recent one taking place at the new Swadlincote Innovation Centre on the George Holmes Business Park.

www.swadlincoteinnovationcentre.co.uk

The Government has set out a package of support for businesses, including the Energy Bill Relief Scheme; Cancelling the planned increase to Corporation Tax; Reversing the increase in National Insurance rates; and, Making the temporary annual investment allowance permanent.

COVID Business Support

Approaching half a million pounds has been distributed by the District Council to businesses in South Derbyshire through the COVID Additional Relief Fund. The funding was distributed in the form of a reduction on businesses' rates bill to companies that were able to demonstrate that they had been negatively affected by COVID.

Dove Valley Park

Construction of a 196,000 sqft (18,200 sqm) new industrial/warehouse unit at Dove Valley Park, Foston has now been completed. Elsewhere on the Park, work on MEG Group's first UK manufacturing facility continues. The bottling plant will serve supermarket giant Lidl with mineral water and soft drinks. Recruitment is underway, with operations set to commence in 2023.

<https://www.careers4derby.co.uk/>

Airway 9

Derbyshire County Council has provided additional funding to extend the Airway 9 bus service for a further year. The Service links Burton, Swadlincote, Melbourne and Ashby with new employment opportunities at East Midlands Airport and the East Midlands Gateway employment site.

<https://slp-emg.com/>

Smart Parc

Recruitment for the first occupier of Smart Parc Derby at Spondon is underway – HelloFresh distributes meal kits to subscribers. The Parc will provide 2 million sqft of high-tech food manufacturing and distribution facilities.

<https://smart-parc.com/locations/smartparc-segro-derby/>

Mercia Park

Recruitment has commenced for the Jaguar Land Rover Global Parts Logistics Centre which will be operated by Unipart. Mercia Park at Appleby Magna is also home to logistics company, the DSV Group.

<https://merciaparkconstruction.co.uk/project-summary/>

Swadlincote Jobs Fair

A 'Way to Work' jobs fair has been staged with the Department for Work and Pensions and other local partners at Swadlincote Adult Community Education centre, and similar events have been promoted in Coalville and at the Pirelli Stadium.

Meet The Employer

Support has been provided for the annual 'meet the employer' mock interview programme with local secondary schools, together with the promotion of careers in the area's growing logistics and transport technology sectors.

Shared Prosperity Fund

South Derbyshire has been allocated £2,156,374 through the Shared Prosperity Fund over the period 2022-25. The Fund is part of the Government's 'Levelling Up' initiative and aims to support projects that build pride in place, support high quality skills training, support pay, employment and productivity growth and increase life chances.

An Investment Plan has been developed and submitted to Government, proposing investments in communities and place, supporting local businesses, and people and skills.

South Derbyshire has latterly been allocated a further £400,000 of capital from the Shared Prosperity Fund through the Rural England Prosperity Fund to be spent across two financial years 2023/24 and 2024/25. This will provide capital funding to:

- support new and existing rural businesses to develop new products and facilities that will be of wider benefit to the local economy. This includes farm businesses looking to diversify income streams; and,
- support new and improved community infrastructure, providing essential community services and assets for local people and businesses to benefit the local economy.

Multiply

A key component of the Government's Levelling Up agenda is to ensure that by 2030, the number of people successfully completing high-quality skills training will have significantly increased in every area of England. Accordingly, the UK Shared Prosperity Fund (UKSPF) has allocated £559m to the Multiply Programme.

The overall objective of Multiply is to increase the levels of functional numeracy in the adult population across the UK. Government have identified the following success measures for the whole programme at a national level:

1. More adults achieving maths qualifications courses (up to, and including, Level 2).
2. Improved labour market outcomes.
3. Increased adult numeracy across the population.

Derbyshire County Council has led the development of an Investment Plan to deliver the programme in the County, which aims to target families via family learning, care leavers, low-income households, and vulnerable populations (offenders, travellers, disability, carers, BAME, rural poverty) via the following interventions which will be aimed at: addressing the cost of living crisis (maximising income and managing money); improving physical and mental well-being; promotion of sustainable activities and reducing waste; and, developing the skills needed to enter and progress in employment and support employer skills needs.

Census 2021

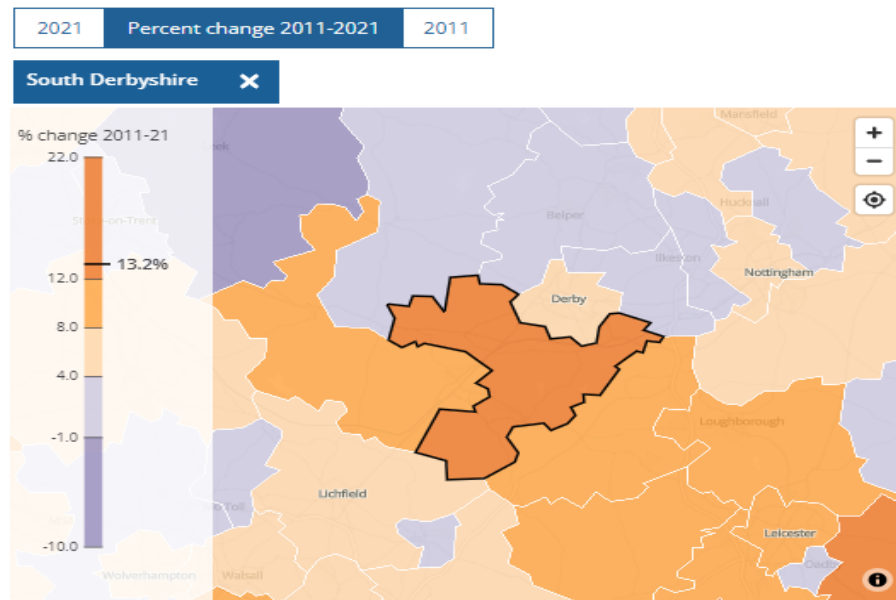
The population of South Derbyshire has grown by 13.3% in the last decade, the 2021 Census has revealed. (The population of England and Wales grew by 6.3% over the period). There are now 107,200 people living in the District, compared to 94,611 in 2011.

The number of households in South Derbyshire has increased by 15.9%. (This compares with 6.1% for England and Wales). In 2011, there were 38,992 homes in the District compared to 45,200 in March 2021. An increase of 6,208 homes (14% increase) over the decade.

South Derbyshire's population density has increased by 13.2% since 2011, with 312 people per square meter compared to 280 in 2011.

https://observatory.derbyshire.gov.uk/wp-content/uploads/reports/documents/census/2021_census/Census2021_FirstReleaseDerbyshire.html

Figure 6: Population density, 2021 and changes since 2011, local authorities in England and Wales



Source: Office for National Statistics - Census 2021

Any action required of Partners i.e. attendance or promotion of an event.

To raise awareness of the initiatives highlighted above and make referrals, including:

- South Derbyshire Local Plan - Government policy requires that Local Plans are reviewed every five years to see if they need updating and South Derbyshire District Council has decided that the time is right to update the Local Plan. An 'Issues and Options' consultation is the first formal consultation as part of this update to the Local Plan. Its purpose is to ensure that the Emerging Local Plan covers all the right issues including housing, jobs, infrastructure, health, climate change and the built and natural environment. Information regarding the consultation can be found at: www.southderbyshire.gov.uk/issuesandoptions
- Derbyshire Business Start-up Programme – offering grants and advice to new start businesses:
<https://www.derbyshire.gov.uk/business/support-advice/vision-derbyshire/vision-derbyshire-business-support.aspx>
- Two forthcoming business events:
 - Business Start-up for Ukrainian Refugees (at Creative Melbourne Gallery) – 17 October.
 - Thinking of Starting a Business (at Swadlincote Innovation Centre) – 15 November.<https://www.southderbyshire.gov.uk/our-services/business-and-investment/business-news-and-events>
- Green Entrepreneur Fund - grant fund for businesses interested in developing, investing and training in green energy and carbon reduction schemes:
<https://www.derbyshire.gov.uk/business/green-entrepreneurs-fund/green-entrepreneurs-fund.aspx>



Agenda Report to the Board
Item 8. PARTNERSHIP BUDGET UPDATE

1.0 Recommendations

- 1.1 To provide funding of £2,000 for the South Derbyshire Environmental Forum and Rosliston Rangers project (Environmental Education Project).

2.0 Purpose of Report

- 2.1 The District Council acts as accountable body for the South Derbyshire Partnership. This report provides an overview of the Partnership's current financial position.

3.0 Detail

- 3.1 It is proposed that the Partnership provides funding for the following project in 2022/23:

- South Derbyshire Environmental Forum and Rosliston Rangers project (Environmental Education Project). Running volunteering sessions for mixed age groups, sign-posting to specific training courses (e.g. first aid, brush cutter training, coppicing training, carbon literacy) and providing on the job training to extend their skills in environmental conservation and environmental/ Climate Change/ carbon footprint awareness. Also enabling people to develop employability skills and experience in team working, risk assessment/ health and safety and managing self, including timekeeping. Supporting networking events for various groups to meet and swap ideas.

A copy of the application form is attached as Annex A.

2022/23 Distribution of Funds

3.2 South Derbyshire District Council has provided £10,000 of funding to the Partnership for 2022/23. Several projects planned for 2021/22 were not able to go ahead and these funds have been carried forward to 2022/23.

2022/23	£
Income	
Balance from previous years	11,424.05
Adjustment (correction for Community Awards and carry forward for ALICE)	-26.80
SDDC contribution for 2022/23	10,000.00
TOTAL INCOME	21,397.25
Expenditure	
• Project Awards:	
ALICE Project (South Derbyshire CVS) – match funding for £3,500 from Derbyshire County Council (Public Health Locality Funding) – postponed from 2021/22 due to pandemic restrictions	1,500.00
Work Club (Old Post Regeneration Association) - match funding for £3,500 from Derbyshire County Council (Public Health Locality Funding)	1,500.00
• Project Proposals:	
South Derbyshire Environmental Forum and Rosliston Rangers project (Environmental Education Project).	2,000.00
	5,000.00
TOTAL EXPENDITURE	
	16,397.25
BALANCE	

3.3 A number of the projects supported by the Partnership also attract match funding contributions from other public, private and voluntary/community sources, in particular Public Health Locality funding from Derbyshire County Council.

4.0 Financial Implications

4.1 Supporting the proposed project will leave the Partnership with a positive balance of £16,397.25.

5.0 Conclusions

5.1 The Partnership is able to directly and indirectly influence significant expenditure taking place in the District, through its own budget and the match funding this attracts and, in particular, through the involvement of the Theme Groups in allocating resources and influencing organisations' activities in the local area.

Contact: Mike Roylance, South Derbyshire District Council
 Tel. (01283) 595725
 Email. mike.roylance@southderbyshire.gov.uk



Application for Funding
(April 2022 – March 2023)
Please complete all
sections of this form

Add: evaluate well being and training aspect; get feedback

1. Applicant Details	
Name: Kate Allies	Job Title: Environmental Engagement Manager
Name and address of organisation receiving funding: South Derbyshire Environmental Education Project (part of SDDC) Unit 1A Rosliston Forestry Centre Burton Rd Rosliston Swadlincote DE12 8JX	
Contact Tel Number: 01283 535039	E mail: kate.allies@southderbyshire.gov.uk

2. Project Details
Title of Project: South Derbyshire Environmental Forum and Rosliston Rangers
Please give a brief summary of the action to be taken and the main objectives: Brief description of the Project: (eg. target locality, target group and how you will deliver the programme)
Background The Environmental Forum and Rosliston Rangers are interdependent. The Rangers Group is the hub for formal and on the job training and then this feeds out into other volunteering groups locally e.g. "Birding for Beginners, Trent and Mersey Canal volunteering, The Conservation Volunteers, Heartwood Community Woodfuel group etc The Environmental Forum is the online hub where opportunities and information are shared and groups supported e.g. in finding experts or particular training.
The project Running volunteering sessions for mixed age groups, sign-posting to specific training courses (e.g. first aid, brush cutter training, coppicing training, carbon literacy) and providing on the job training to extend their skills in environmental conservation and environmental/ Climate Change/ carbon footprint awareness. Also enabling people to develop employability skills and experience in team working, risk assessment/ health and safety and managing self, including timekeeping. Supporting networking events for various groups to meet and swap ideas
Aim is that all sessions will be free and that training that is facilitate or led will be free. (The Team may signpost to some local training with a small fee as well as the free opportunities).
<u>Target participations</u> Rangers:
<ul style="list-style-type: none"> - People unemployed and looking to retrain - Young people and others leaving training and needing experience in order to get jobs - People needing a boost for their mental health - Retired people keen to make a difference and support / improve/ learn about their local area

Rosliston Rangers has had a successful first 3 years, completing many tasks, providing camaraderie and health benefits to over 50 individuals and launching new careers as some Rangers have moved into paid environmental training or employment.

Over the next few months we want to provide training in 3 key areas of site management tasks:

Meadow creation and management, hedgelaying, basic carpentry skills, coppicing and woodland management.

Working with partners like Burton Conservation Volunteers, Forestry England, The Conservation Volunteers and Heartwood we would provide skills leaders to provide the training and mentor the Rangers as they start to deliver tasks

Objectives:

- **To improve practical skills and knowledge of the environment and conservation**
- **To widen knowledge about climate issues and personal impact opportunities**
- **To encourage social and physical mixing within different age groups (retired and young people) and mixing geographically across the District (skill sharing between groups**
- **To make tangible improvements to habitats and the local environment – both directly through Rosliston Rangers and indirectly by supporting wider networks and other groups**

Outcomes: (e.g. improved mental wellbeing)

- **Improved mental wellbeing of participants**
- **Reduced isolation for some participants who have identified this as a reason for attending**
- **Improvements to the local area through conservation volunteering**
- **Increasing conservation skill levels for participants**
- **Increased employability skills for participants (eg team working, understanding health and safety, timekeeping)**

Outputs: (e.g. number of beneficiaries, number of sessions)

Rangers: at least 15 participants per session, with around 20 different people attending over the time period.

Continued.....

3. Describe how your project is supporting the South Derbyshire Partnership?	Please refer to the South Derbyshire Sustainable Community Strategy 2009-2020: 2017 Refresh (available on SDDC website)
Priority	Activity
Healthier Communities	Physical fitness is improved through conservation activities
Healthier Communities	Improved mental health has been linked to community volunteering, physical activity and engagement with nature
Safer Communities	By increasing local pride in the area, it is hoped that damage e.g. to public open space will be reduced i.e. if an area is shabby and full of rubbish that tends to attract more rubbish. By improving an area (and supporting local groups to do so) it is hoped that it will remain well looked after.
Vibrant Communities	Active volunteering is a key factor in encouraging thriving, vibrant communities. This project would also support making South Derbyshire an attractive place to live in, work in and visit and increase the knowledge base of local biodiversity A conservation working group would be able to support local village groups with practical task-orientated training for low or no cost to the village groups/ participants. Interlinks between this group and other local groups across the District from Overseal and Coton to Melbourne and Aston.

3. What are the Project costs?

Costs:

2 x days coppicing training @£250 per day

2 x days hedgelaying training @£250 per day

2 days woodland management training @ £250 per day

Online course in meadow development and management @£45 per place x 5 places £225

Specialist equipment eg 10m pole saw for trimming tree crowns where hanging deadwood (mostly due to ash dieback)

£500

Total £2225

How much funding towards the Project is sought from the South Derbyshire Partnership and what would this be spent on?

£2000

This would be spent on contributing to all elements of the project but particularly the networking and training opportunities

4. Will the grant be used for match funding?

Yes / No (please circle)

If yes, how much funding will be drawn from elsewhere (and the source)?

A grant from the National Forest Company (Oct 22) will be supporting the project with contribution towards staffing costs (not included here) and additional tools for meadow management.

The National Forest Company is also providing some other training courses and networking opportunities.

5. Please explain how the need for this Project has been determined?

The Team cannot keep pace with the number of volunteers that want to do environmental conservation. There is funding for one leader per week and this has been costed at one x leader per week to the covid grant as the Group had to be split to minimise contact.

Four-five leaders are needed per session now on a regular basis and to keep the sessions free additional funding is required.

There are two new trainee leaders and they need to build up their skills to be able and confident to take a group on their own.

Numbers have been building gradually since Covid began from an average of five to seven each time. W/c 10 and 17 Jan 17-20 people attend and therefore there is a need for an additional two leaders per session, more first aid kits and some more equipment. They also want to come more often than one x per fortnight, which cannot currently be facilitated.

The work they are doing is great and it is wonderful when to see they have taken their skills to other groups and other sites too. This "outreach" is not a specific project need for the Team but is beneficial to a wider area.

6. How will Project be monitored and evaluated?

Numbers and tasks are recorded at each session and photos taken

7. Please provide details of any other funding your organisation currently receives from South Derbyshire District Council?

Core staffing costs for project managers and facility hire are met by SDDC.

Please complete and return to;

Mike Roylance
Economic Development
South Derbyshire District Council
Civic Way, Swadlincote, Derbyshire DE11 0AH
e-mail: mike.roylance@southderbyshire.gov.uk
Tel: 01283 595725